



17 Downs Road, Purley

£685,000 Freehold



haboodle

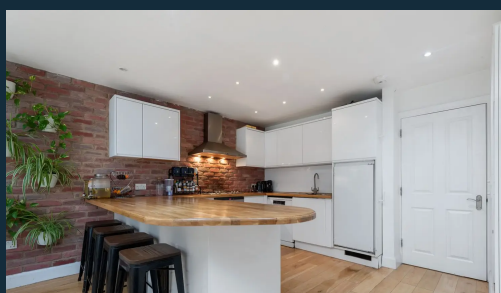
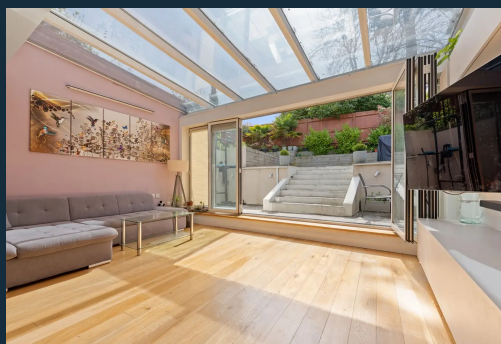


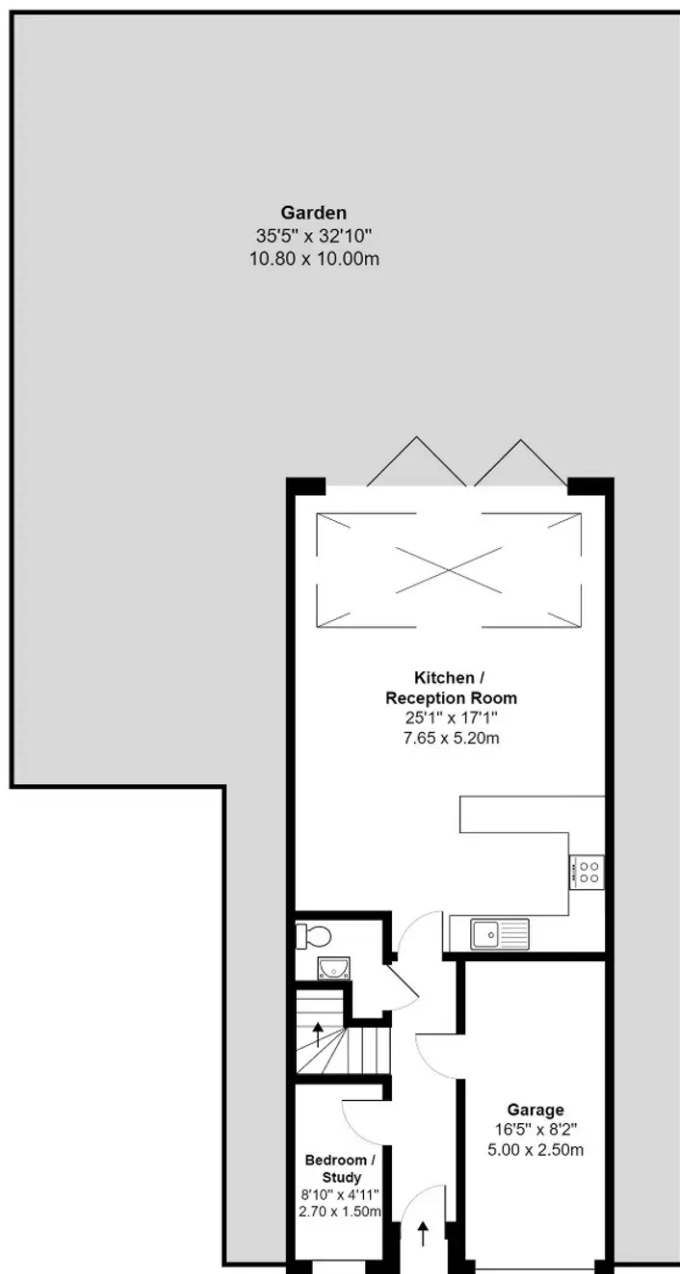
Set in a quiet cul-de-sac and conveniently located, this four-bedroom detached house has been tastefully extended and contemporarily designed throughout offering a vast amount of functional space that will easily house the whole family. Both Purley and Riddlesdown mainline train stations are within a short walking distance, providing fast and direct connections to London.

With spacious light rooms, a contemporary feel and accommodation over three floors comprising a huge open plan living/dining area with a modern fully fitted kitchen with exposed brick feature wall, Bi-Fold doors leading out to a large south-facing rear garden, useful study and downstairs WC, a garage with dedicated utility space and off road parking. The property further benefits from three double bedrooms, one single bedroom which is currently used as an office, and three bathrooms - including two en suites. The house has many interesting features including high ceilings and with its neutral decor throughout, this is a highly desirable home that is ready to be moved into.

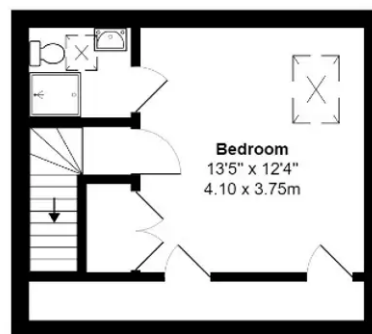


- › Four Bedroom Family Home
- › Detached House
- › No Onward Chain
- › Open-Plan Kitchen / Living
- › South Facing Garden
- › Garage and Driveway for Two Cars
- › Close to Transport Links

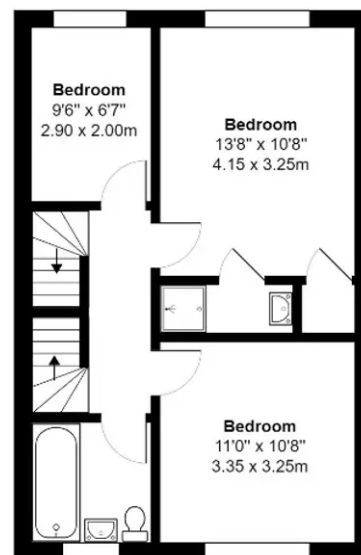




Ground Floor



Second Floor



First Floor

**Downs Road, Purley, CR8**  
**Gross Internal Area 1618sq ft / 150.3sq meters**

Whilst every attempt has been made to ensure the accuracy of the floorplan shown, all measurements, positioning fixtures fittings and any other data shown are an approximate interpretation for illustrative purposes only and are not to scale. No responsibility is taken for any errors, omission, miss-statement or use of data shown.  
Plan produced by AR Net Media - [www.arnetmedia.uk](http://www.arnetmedia.uk)



**haboodle**