

**For Rent**



## People Make Places



**King Street, Covent Garden WC2**

2 bedrooms | 1,011 sq ft

£1,360 pw







This beautifully presented light and bright two bedroom duplex apartment is situated in a stunning period building just off Covent Garden's Piazza. A fourth floor walk up, the flat has wooden floors and a modern open plan kitchen & shower room. The building itself has a stunning sweeping staircase.

#### What you need to know

- Two bedrooms
- Two bathrooms
- Modern kitchen
- Large living room
- Wooden floors throughout
- Unfurnished
- Grand entrance hall
- Moments from the Piazza
- Available late May
- Close to Covent Garden & Leicester Square tube stations



**King Street, Covent Garden WC2**



### Overview

Available late May, on an unfurnished basis, the landlord offers, subject to contract and satisfactory references, a three year contract with a mutual six month rolling break clause. Westminster City Council tax band F.

King Street is one of Covent Garden's most sought after addresses, being one of the part-pedestrianised streets that serve the Piazza. The ongoing transformation in recent years sees the street lined with a number of fashion boutiques, luxury retailers and world class eateries. There are a number of transport options – Covent Garden (Piccadilly Line), Leicester Square (Piccadilly & Northern lines), Charing Cross (main line train, Northern & Bakerloo lines).

The Covent Garden Estate, one of London's most vibrant, historic and globally recognised destinations, has been recently reshaped to create a safer neighbourhood and secure environment for those looking to make it their home.

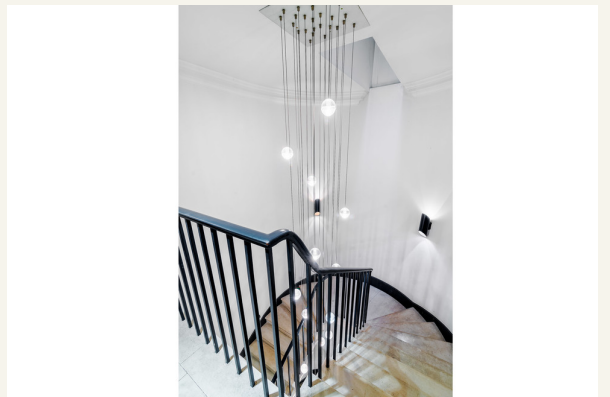
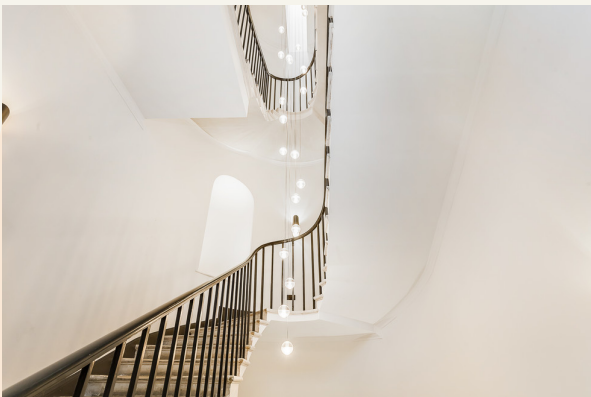
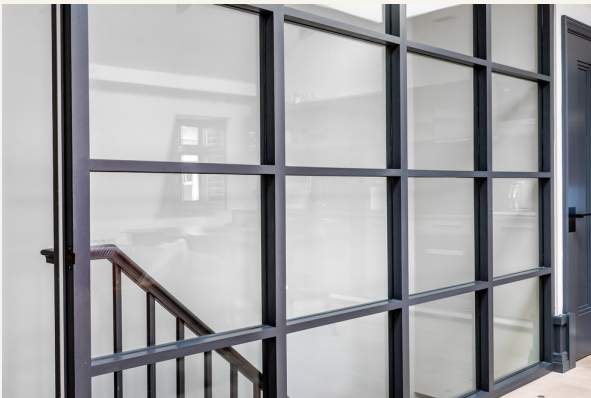






King Street, Covent Garden WC2





# People Make Places

London is collection of inspiring urban villages and one of the most exciting places in the world to live, work & play.

We work with both property owners and their occupiers, sharing the story of these vibrant neighbourhoods, conveying the unique soul & energy to future custodians, the people who'll keep them buzzing.

And unlike many real estate businesses we're not just about buildings, because streets & buildings don't make a neighbourhood.

We're about building relationships, because **people make places**.

MISINTERPRITATION ACT [COPYRIGHT] DISCLAIMER: Tavistock Bow Ltd for themselves and for the vendor(s) of this property whose agents thy are, given notice that: 1. These particulars do not constitute, not constitute any part of, an offer or contract. 2. None of the statements contained in these particulars as to the property are to be relied on as statements or representations of fact. 3. Any intending purchaser or lessee must satisfy themselves by inspection or otherwise as to the correctness of each of the statements contained in these particulars. 4. The vendor(s) or lessor(s) do not make or give and neither Tavistock Bow Ltd nor any person in their employment has any authority to make or give any representation or warranty whatever in relation to this property. Finance Act 1989, Unless otherwise stated all prices and rents are quote exclusive of VAT. Property Misrepresentation Act 1991; These details are believed to be correct at the time of compilation but may be subject to subsequent amendment.

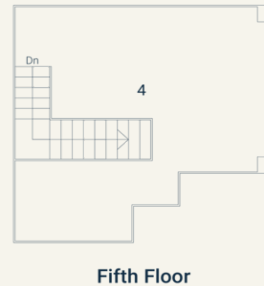
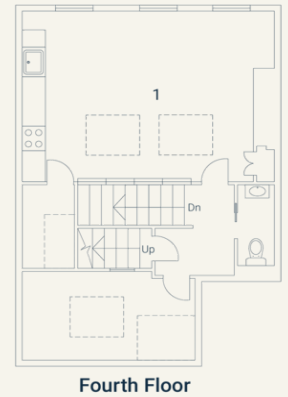
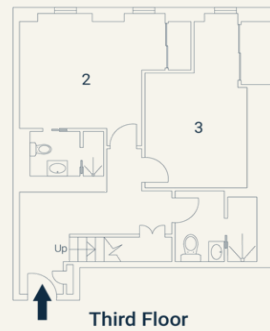
Follow us:     @tavistockbow

Score	Energy rating	Current	Potential
92+	A		
81-91	B		
69-80	C	70 C	76 C
55-68	D		
39-54	E		
21-38	F		
1-20	G		

## King Street, WC2

Approximate Gross Internal Area 94 sq m / 1011 sq ft  
Excluding External Terrace Of 33 sq m / 355 sq ft

	2 Bedroom	3 Bedroom	4 Terrace
1 Living / Kitchen / Dining	4.20 x 3.52M 13'7" x 11'5"	4.60 x 2.63M 15'0" x 8'6"	6.38 x 6.08M 20'9" x 19'9"
	6.15 x 4.52M 20'1" x 14'8"		



Floorplan produced for Tavistock Bow. Illustration for identification purposes only and not to scale. All measurements are approximate and not to be relied upon.

**tavistockbow**

21 New Row, Covent Garden,  
London, WC2N 4LE

t: 020 7477 2177  
e: hello@tavistockbow.com  
w: tavistockbow.com



**King Street, Covent Garden WC2**