





Mandalay, 23 Lydwell Road

Torquay, Torquay

Nestled within a most sought after residential position boasting panoramic sea and coastal views, this exquisite 4 bedroom detached house offers a blend of stunning aesthetics and supreme functionality. Meticulously refurbished to a high specification, this property presents an ideal opportunity for those seeking a contemporary coastal retreat.

Upon entering, one is immediately struck by the spacious accommodation and harmonious mix of elegance and modernity. The open plan living space seamlessly transitions from the quality modern fitted kitchen to the inviting lounge area, creating a perfect setting for both relaxation and entertaining.

The property features four generously proportioned ground floor double bedrooms, each offering a tranquil sanctuary for rest and rejuvenation. Additionally, two ground floor bathrooms allow for convenience and privacy for residents and guests alike.

Ascending to the first floor, the principal suite awaits, covering the entire level and ensuring the utmost in luxury living. Complete with a private, enclosed sun terrace, en suite bathroom/WC, and a thoughtfully designed dressing area, this retreat provides a haven of comfort and indulgence.

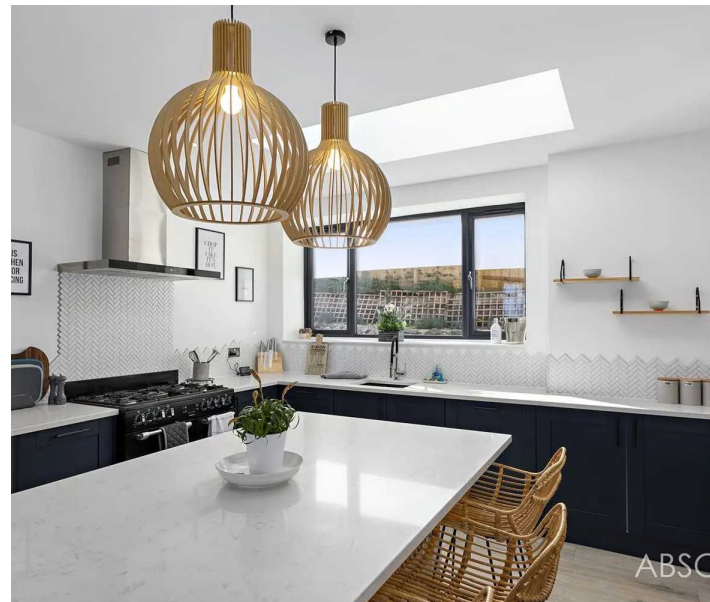


Rear Garden

Access down both sides of the property lead to the large rear garden which is slightly sloping and largely laid to lawn with a further timber decked sun terrace to the bottom, ideal for al fresco dining. The rear garden offers a great deal of privacy.

Outside, the property impresses with its extensive offerings, including a long driveway providing ample off-road parking, as well as a larger than average single garage for added convenience. The good size gardens provide a green oasis, ideal for outdoor enjoyment and relaxation. To the side of the property there is a newly installed games room.

For those seeking outdoor tranquillity, the superb timber decked sun terrace offers a picturesque setting to soak in the captivating sea and coastal views. Whether sipping a morning coffee or enjoying an evening sunset, this space is sure to become a favourite spot for unwinding and appreciating the natural beauty that surrounds.



Mandalay, 23 Lydwell Road

Torquay, Torquay

In summary, this property presents a rare opportunity to acquire a home of exceptional quality in a coveted location, where every detail has been carefully considered to offer a lifestyle of luxury and comfort. Ideal for those seeking a modern coastal haven, this house is sure to captivate and inspire discerning buyers looking for the epitome of coastal living.



ABSO

ABSO



ABSOLUTE



ABSOLUTE



ABSOLUTE



ABSOLUTE

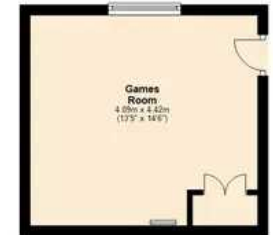


ABSOLUTE

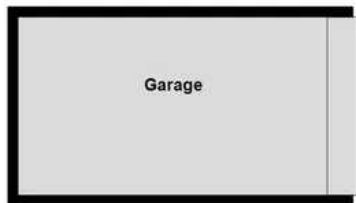
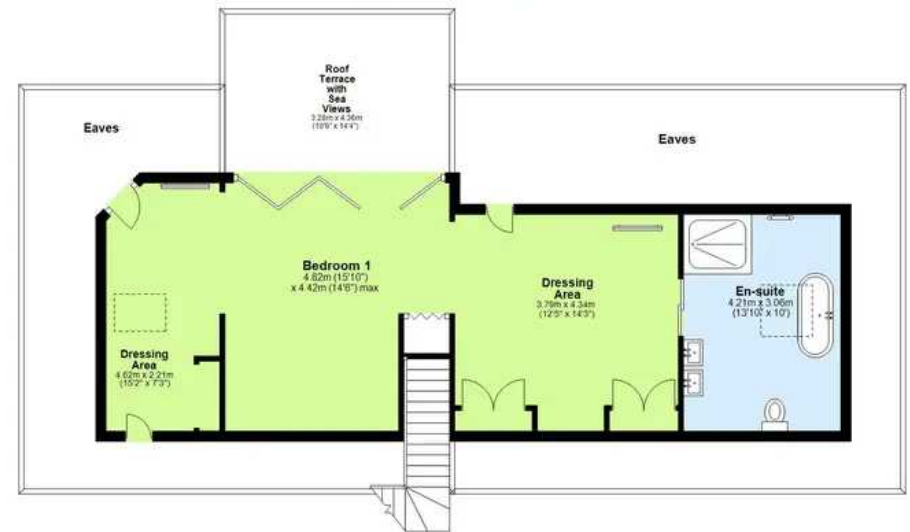
Ground Floor
Approx. 209.9 sq. metres (2259.5 sq. feet)



Garden Floor
Approx. 18.1 sq. metres (194.6 sq. feet)



First Floor
Approx. 60.8 sq. metres (654.5 sq. feet)



Total area: approx. 288.8 sq. metres (3108.5 sq. feet)

Approx
Plan produced using PlanUp.



Absolute Sales & Lettings

Absolute Sales & Lettings Ltd, 13 Ilsham Road - TQ1 2JG

01803 214214

torquay@movewithabsolute.co.uk

movewithabsolute.co.uk/

