

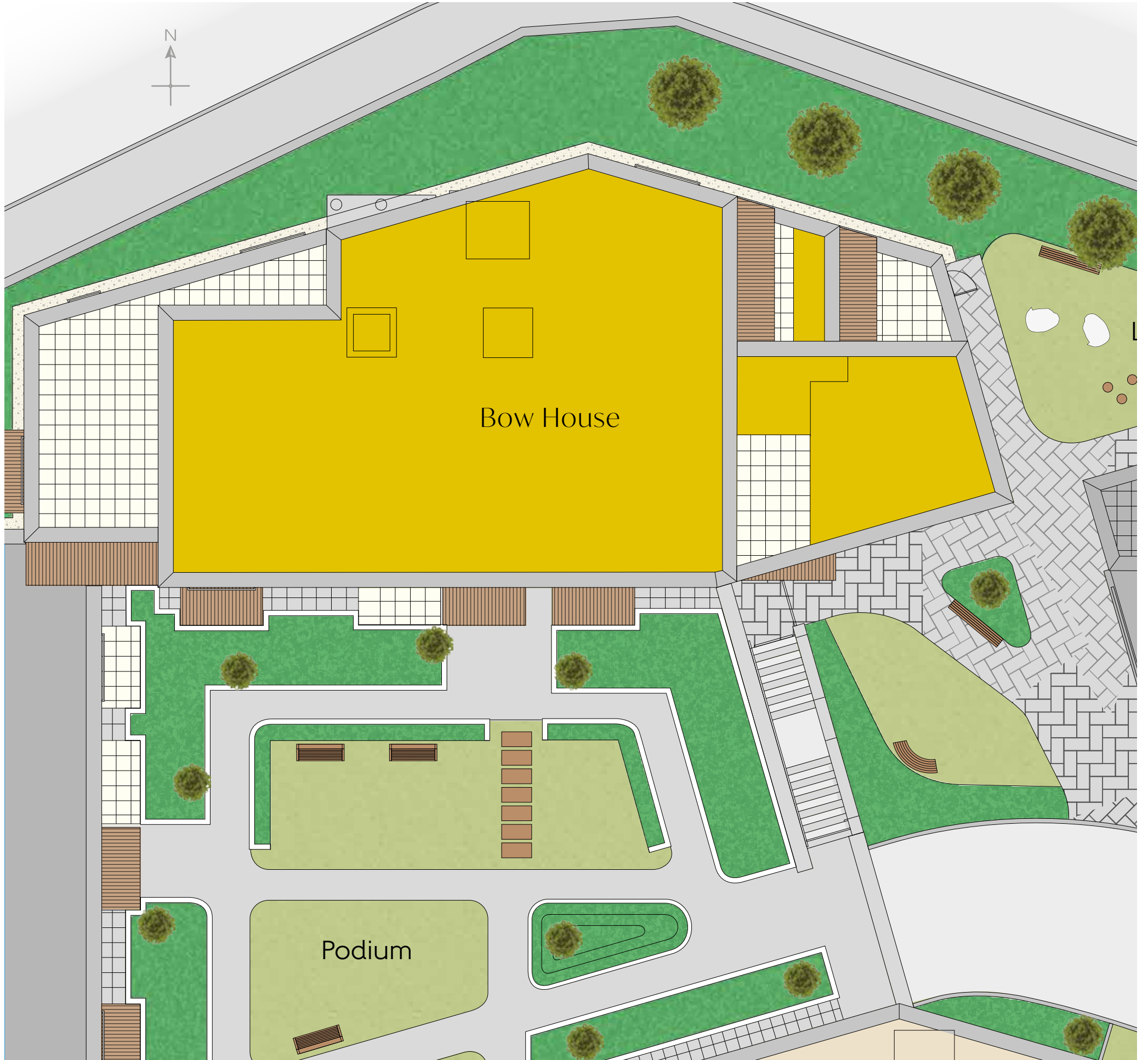
Bow House

STUDIO, ONE AND TWO BEDROOM APARTMENTS



Cooper Square
A development of new homes in Maidenhead, Berkshire

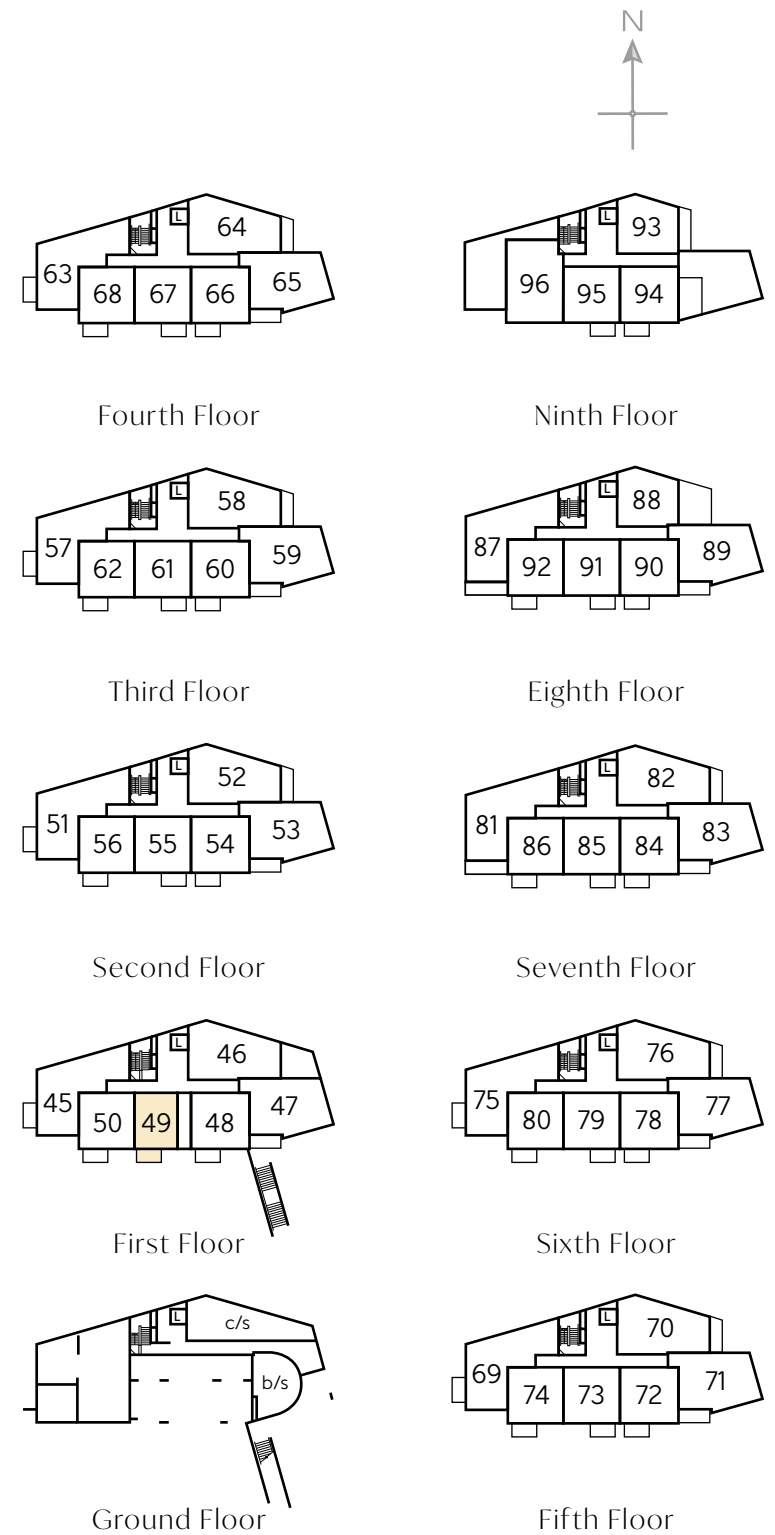
Bellway





The Grainger - Plot 49

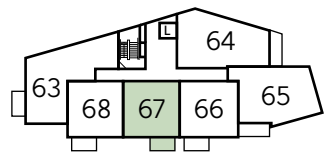
Kitchen	2.25m x 2.02m	7'4" x 6'6"
Living Area	5.39m x 3.60m	17'7" x 11'8"
Total area	38.1 sq. m.	410 sq. ft.



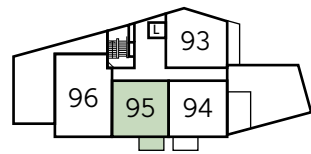
c/s - cycle store b/s - bin store L - Lift

Furniture arrangements are for illustrative purposes only. Items are not included, nor to scale.

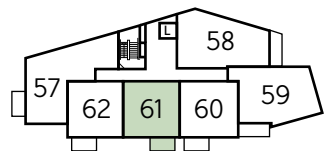
The items shown in this key may be subject to change, and positions could vary from those indicated on this floorplan. Please refer to Sales Advisor for details of your selected plot. External finishes and landscaping may vary. Please refer to Sales Advisor for further details. All dimensions are approximate and should not be used for carpet sizes, appliance spaces or furniture. We operate a policy of continuous improvement and individual features such as kitchen and bathroom layouts, doors, windows, garages and elevational treatments may vary from time to time. Consequently these particulars should be treated as general guidance only and do not constitute a contract, part of a contract or a warranty.



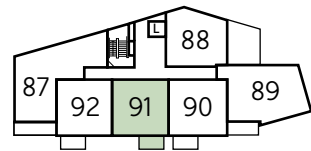
Fourth Floor



Ninth Floor



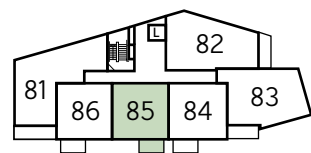
Third Floor



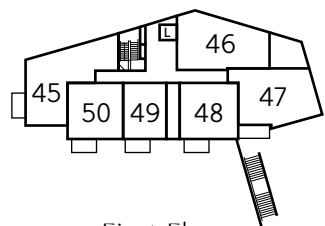
Eighth Floor



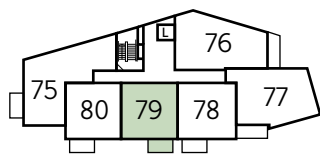
Second Floor



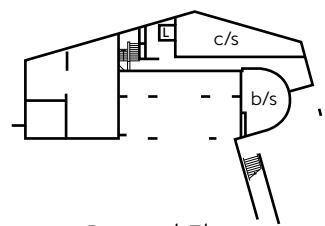
Seventh Floor



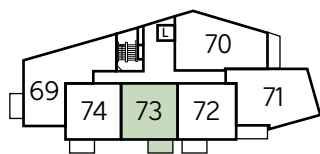
First Floor



Sixth Floor



Ground Floor



Fifth Floor



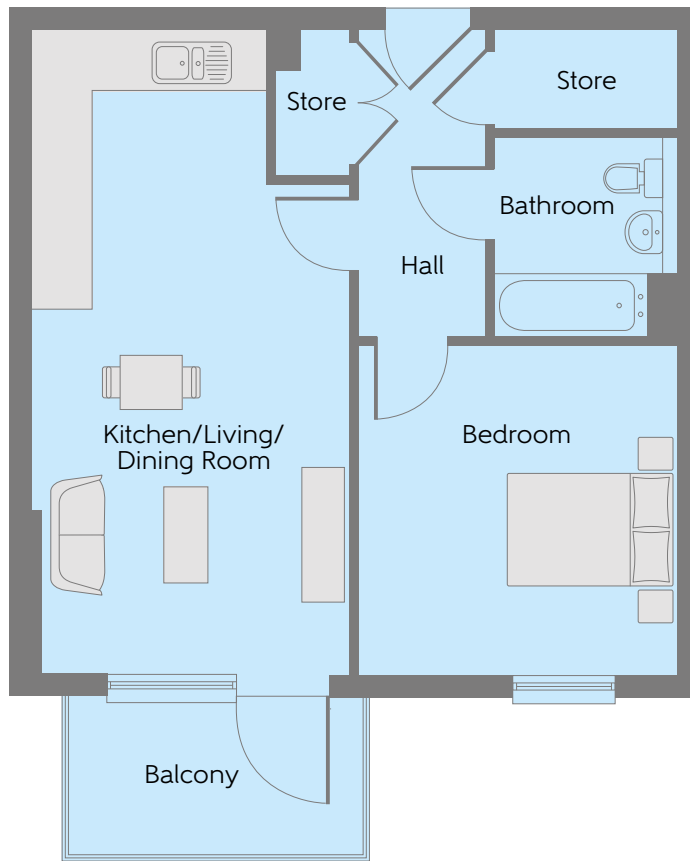
The Gregory 1 – Plots 55, 61, 67, 73, 79, 85, 91 & 95

Kitchen/Living/ Dining Room	7.02m x 3.50m	23'0" x 11'5"
Bedroom	3.60m x 3.53m	11'8" x 11'5"
Total area	50.4 sq. m.	542 sq. ft.

c/s - cycle store b/s - bin store L - Lift

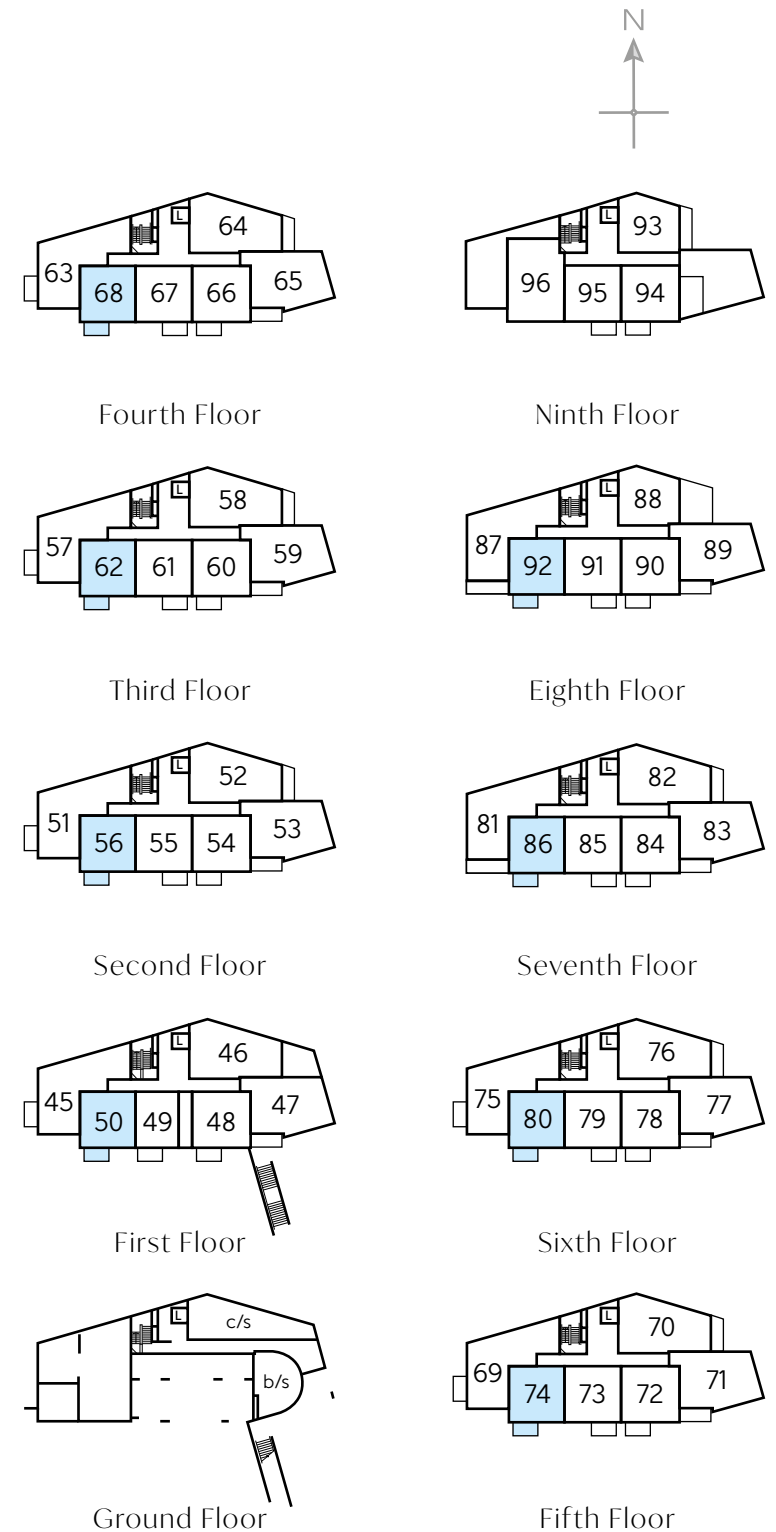
Furniture arrangements are for illustrative purposes only. Items are not included, nor to scale.

The items shown in this key may be subject to change, and positions could vary from those indicated on this floorplan. Please refer to Sales Advisor for details of your selected plot. External finishes and landscaping may vary. Please refer to Sales Advisor for further details. All dimensions are approximate and should not be used for carpet sizes, appliance spaces or furniture. We operate a policy of continuous improvement and individual features such as kitchen and bathroom layouts, doors, windows, garages and elevational treatments may vary from time to time. Consequently these particulars should be treated as general guidance only and do not constitute a contract, part of a contract or a warranty.



The Gregory 2 - Plots 50, 56, 62, 68, 74, 80, 86 & 92

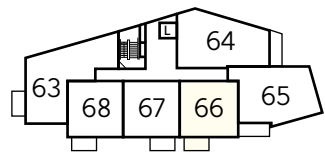
Kitchen/Living/ Dining Room	7.02m x 3.50m	23'0" x 11'5"
Bedroom	3.60m x 3.52m	11'8" x 11'5"
Total area	50.3 sq. m.	541 sq. ft.



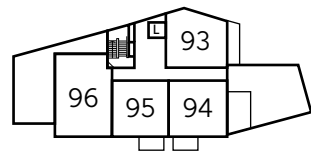
c/s - cycle store b/s - bin store L - Lift

Furniture arrangements are for illustrative purposes only. Items are not included, nor to scale.

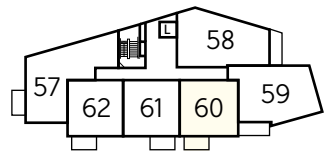
The items shown in this key may be subject to change, and positions could vary from those indicated on this floorplan. Please refer to Sales Advisor for details of your selected plot. External finishes and landscaping may vary. Please refer to Sales Advisor for further details. All dimensions are approximate and should not be used for carpet sizes, appliance spaces or furniture. We operate a policy of continuous improvement and individual features such as kitchen and bathroom layouts, doors, windows, garages and elevational treatments may vary from time to time. Consequently these particulars should be treated as general guidance only and do not constitute a contract, part of a contract or a warranty.



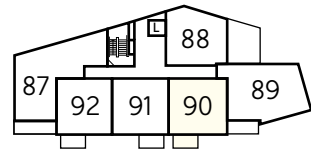
Fourth Floor



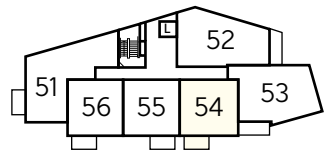
Ninth Floor



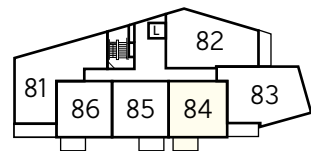
Third Floor



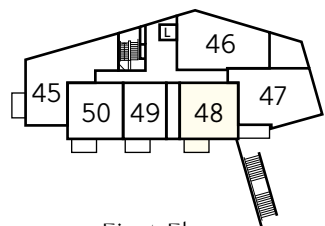
Eighth Floor



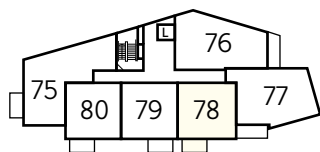
Second Floor



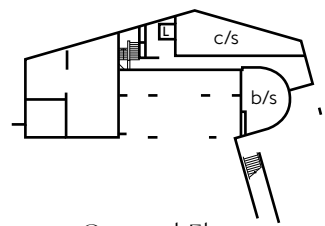
Seventh Floor



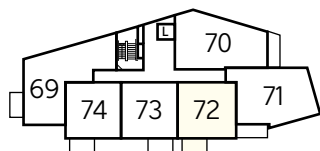
First Floor



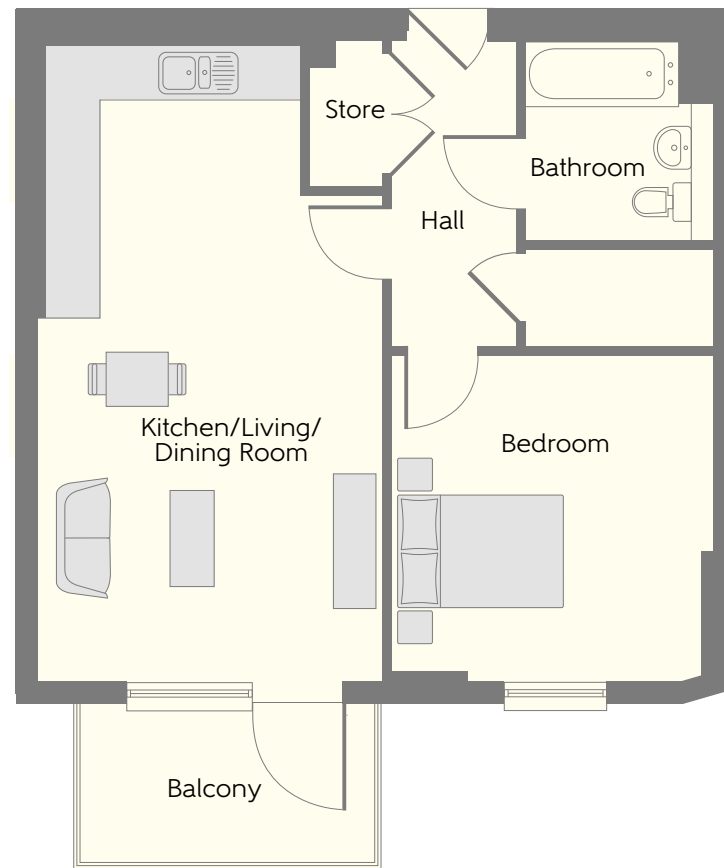
Sixth Floor



Ground Floor



Fifth Floor



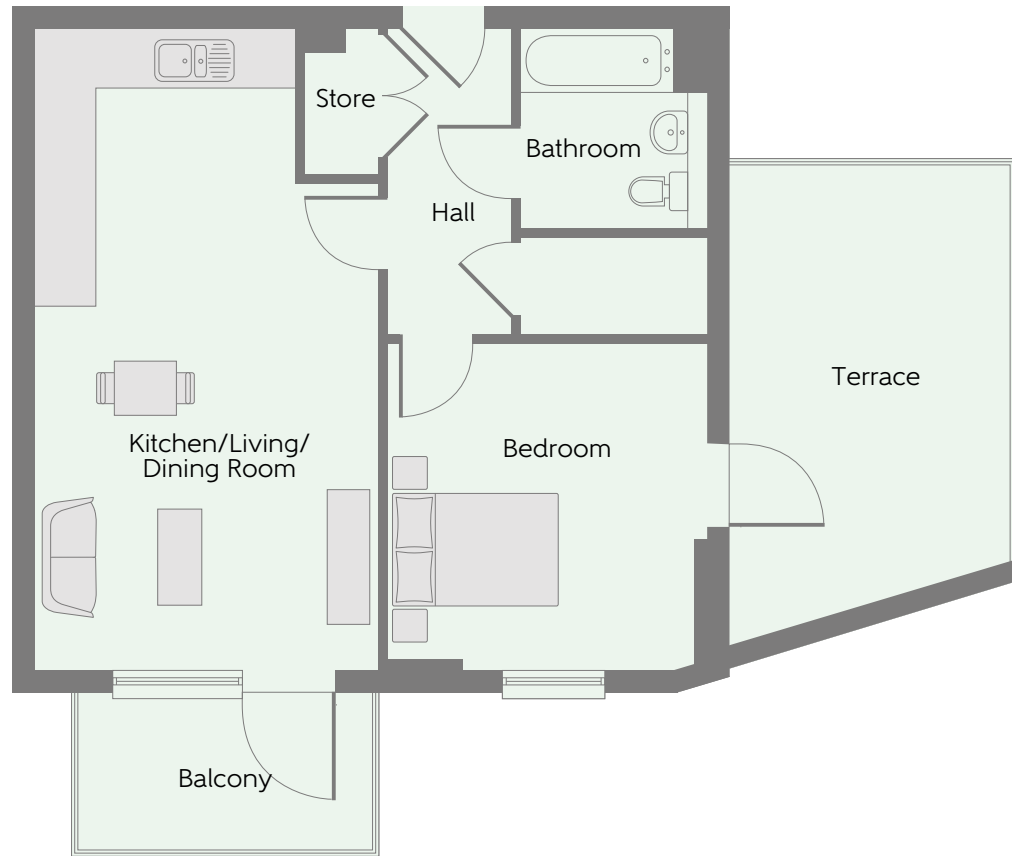
The Regan – Plots 48, 54, 60, 66, 72, 78, 84 & 90

Kitchen/Living/ Dining Room	7.02m x 3.78m	23'0" x 12'4"
Bedroom	3.60m x 3.52m	11'8" x 11'5"
Total area	52.2 sq. m.	562 sq. ft.

c/s - cycle store b/s - bin store L - Lift

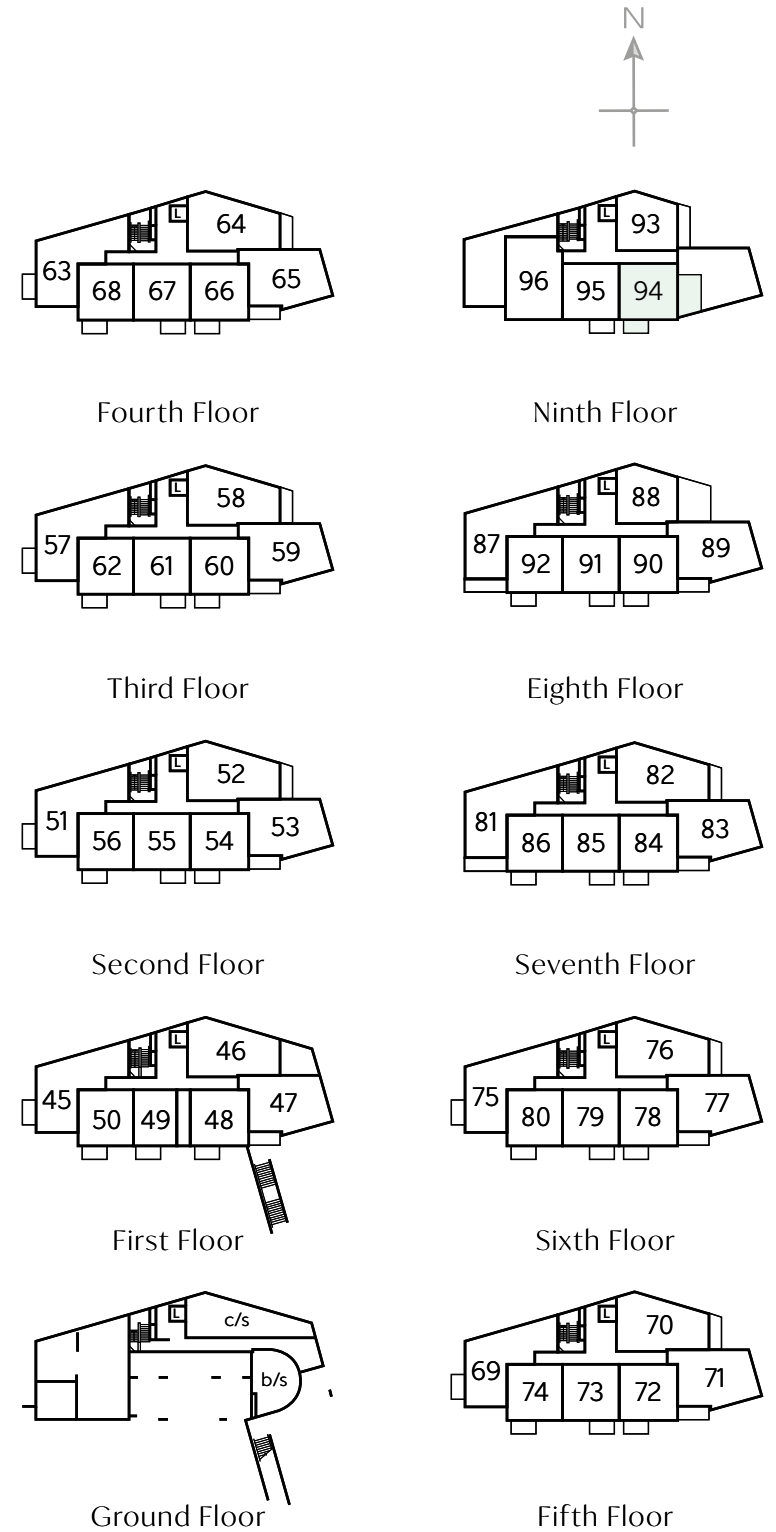
Furniture arrangements are for illustrative purposes only. Items are not included, nor to scale.

The items shown in this key may be subject to change, and positions could vary from those indicated on this floorplan. Please refer to Sales Advisor for details of your selected plot. External finishes and landscaping may vary. Please refer to Sales Advisor for further details. All dimensions are approximate and should not be used for carpet sizes, appliance spaces or furniture. We operate a policy of continuous improvement and individual features such as kitchen and bathroom layouts, doors, windows, garages and elevational treatments may vary from time to time. Consequently these particulars should be treated as general guidance only and do not constitute a contract, part of a contract or a warranty.



The Calder – Plot 94

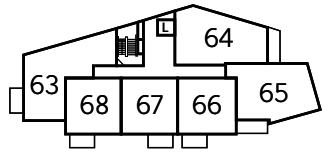
Kitchen/Living/ Dining Room	7.02m x 3.78m	23'0" x 12'4"
Bedroom	3.60m x 3.52m	11'8" x 11'5"
Total area	52.1 sq. m.	561 sq. ft.



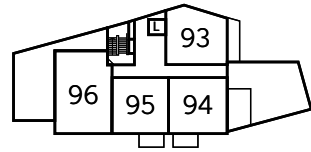
c/s - cycle store b/s - bin store L - Lift

Furniture arrangements are for illustrative purposes only. Items are not included, nor to scale.

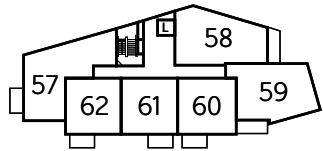
The items shown in this key may be subject to change, and positions could vary from those indicated on this floorplan. Please refer to Sales Advisor for details of your selected plot. External finishes and landscaping may vary. Please refer to Sales Advisor for further details. All dimensions are approximate and should not be used for carpet sizes, appliance spaces or furniture. We operate a policy of continuous improvement and individual features such as kitchen and bathroom layouts, doors, windows, garages and elevational treatments may vary from time to time. Consequently these particulars should be treated as general guidance only and do not constitute a contract, part of a contract or a warranty.



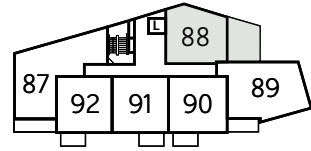
Fourth Floor



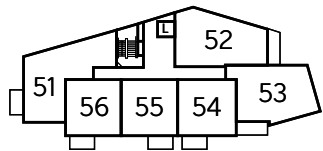
Ninth Floor



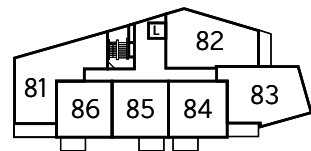
Third Floor



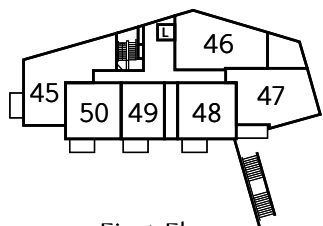
Eighth Floor



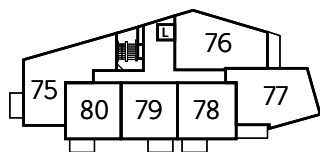
Second Floor



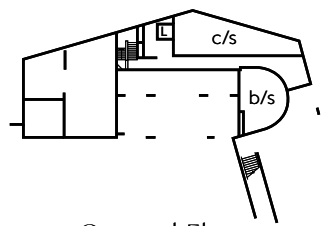
Seventh Floor



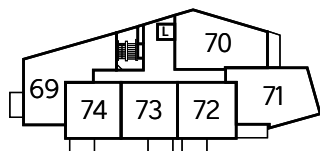
First Floor



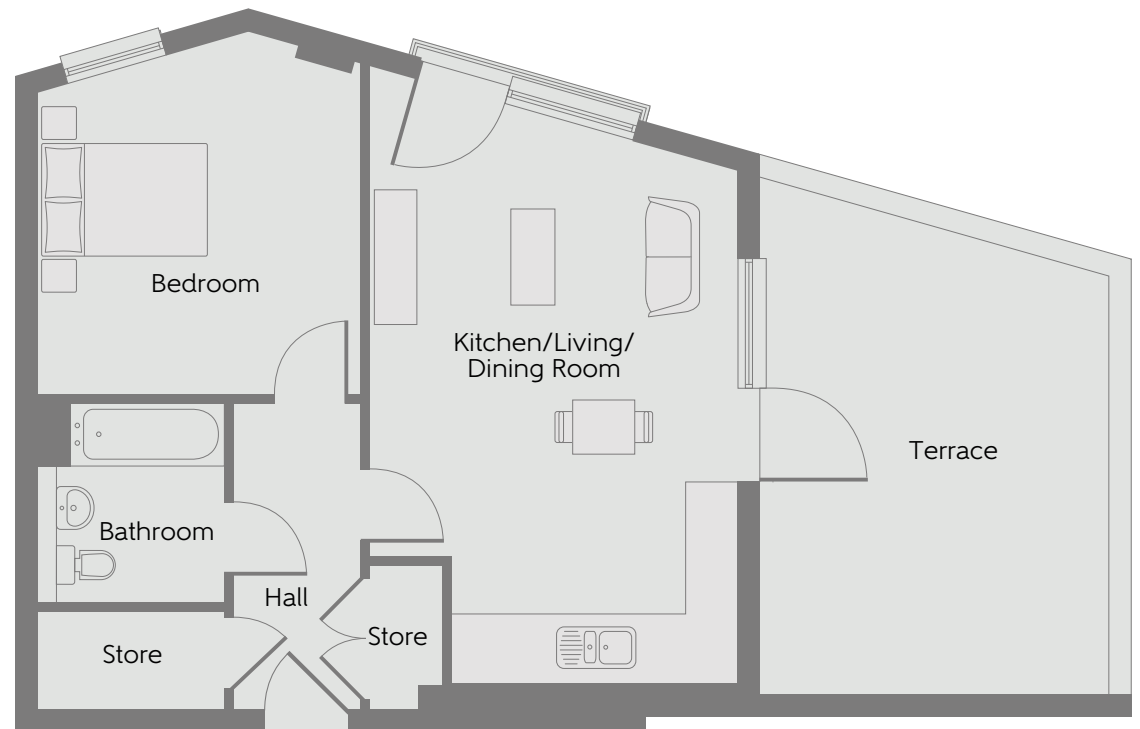
Sixth Floor



Ground Floor



Fifth Floor



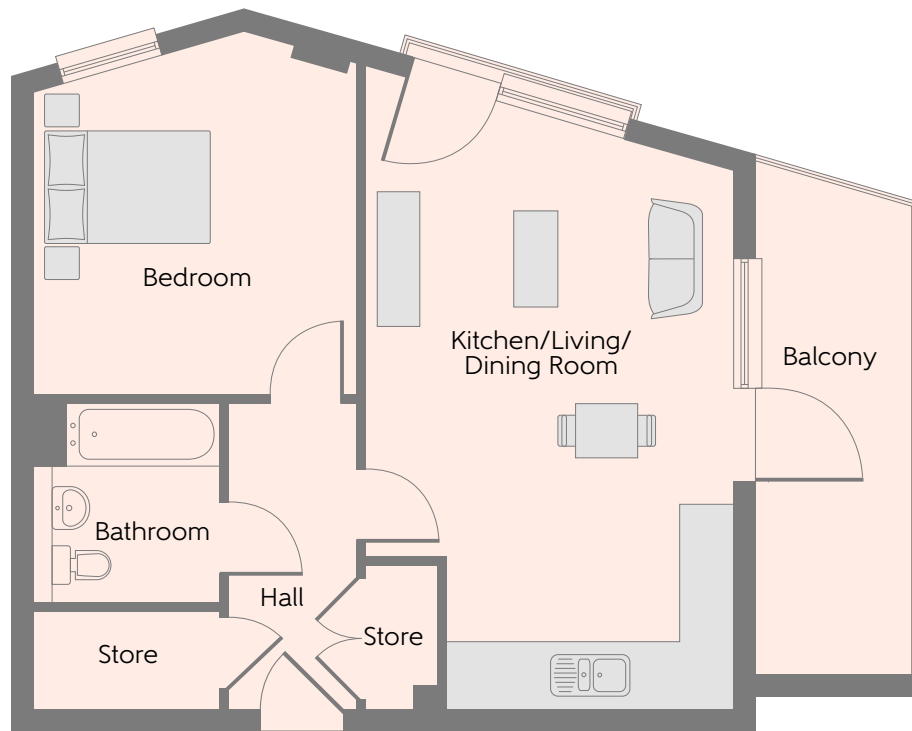
The Watkins - Plot 88

Kitchen/Living/ Dining Room	6.15m x 4.12m	20'2" x 13'5"
Bedroom	3.82m x 3.55m	12'6" x 11'6"
Total area	52.5 sq. m.	564 sq. ft.

c/s - cycle store b/s - bin store L - Lift

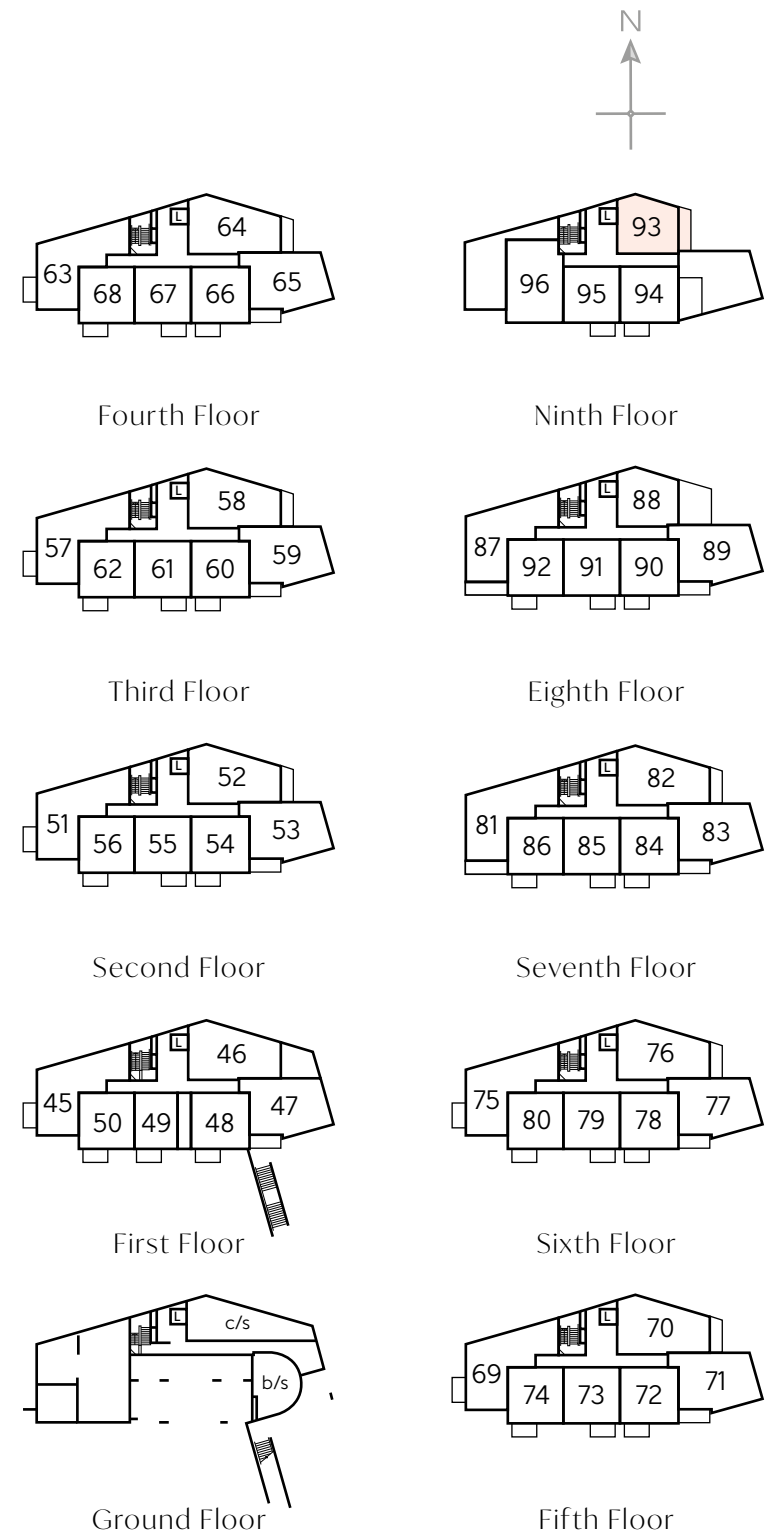
Furniture arrangements are for illustrative purposes only. Items are not included, nor to scale.

The items shown in this key may be subject to change, and positions could vary from those indicated on this floorplan. Please refer to Sales Advisor for details of your selected plot. External finishes and landscaping may vary. Please refer to Sales Advisor for further details. All dimensions are approximate and should not be used for carpet sizes, appliance spaces or furniture. We operate a policy of continuous improvement and individual features such as kitchen and bathroom layouts, doors, windows, garages and elevational treatments may vary from time to time. Consequently these particulars should be treated as general guidance only and do not constitute a contract, part of a contract or a warranty.



The Copeland - Plot 93

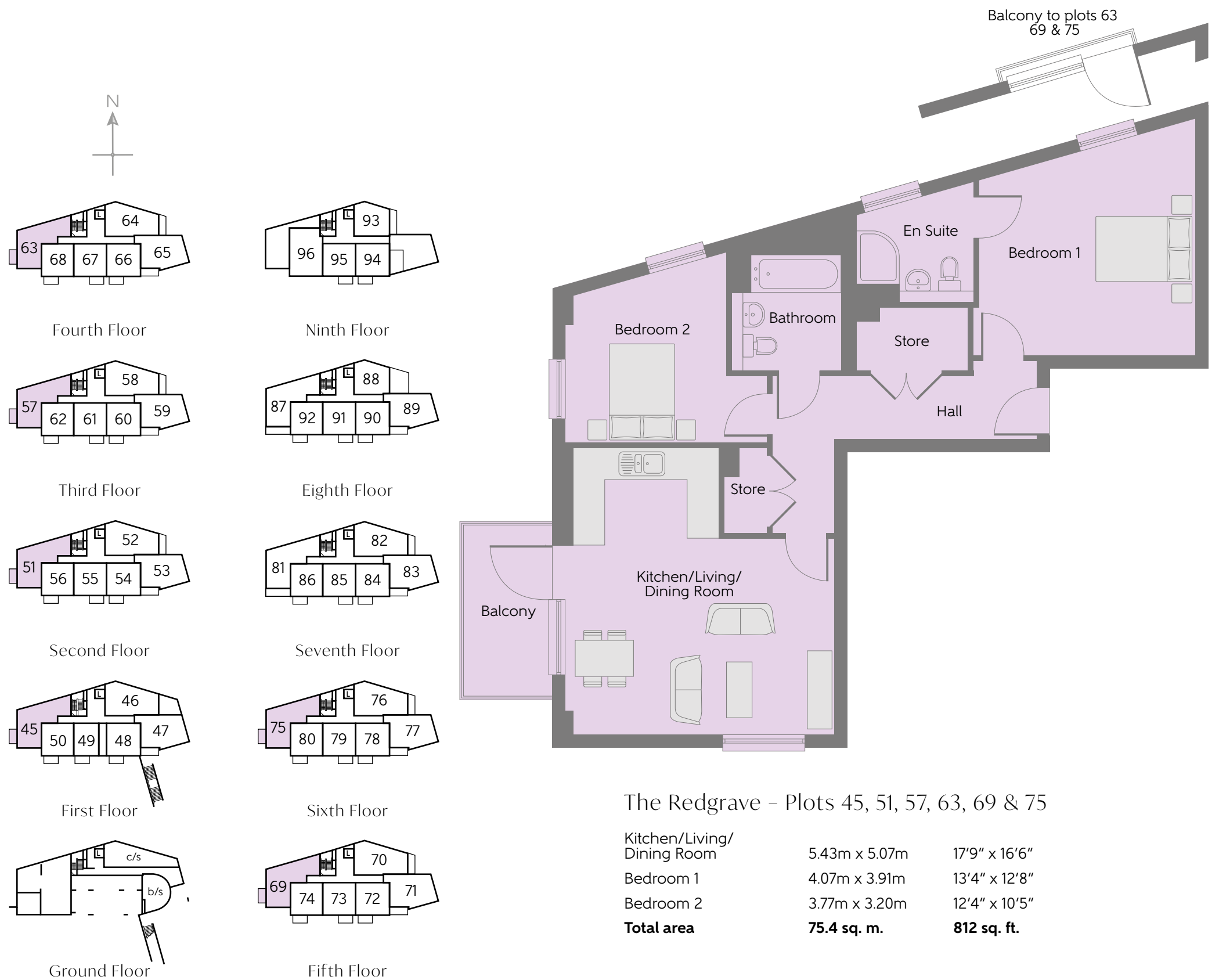
Kitchen/Living/ Dining Room	6.15m x 4.12m	20'2" x 13'5"
Bedroom	3.82m x 3.55m	12'6" x 11'6"
Total area	52.8 sq. m.	568 sq. ft.



c/s - cycle store b/s - bin store L - Lift

Furniture arrangements are for illustrative purposes only. Items are not included, nor to scale.

The items shown in this key may be subject to change, and positions could vary from those indicated on this floorplan. Please refer to Sales Advisor for details of your selected plot. External finishes and landscaping may vary. Please refer to Sales Advisor for further details. All dimensions are approximate and should not be used for carpet sizes, appliance spaces or furniture. We operate a policy of continuous improvement and individual features such as kitchen and bathroom layouts, doors, windows, garages and elevational treatments may vary from time to time. Consequently these particulars should be treated as general guidance only and do not constitute a contract, part of a contract or a warranty.



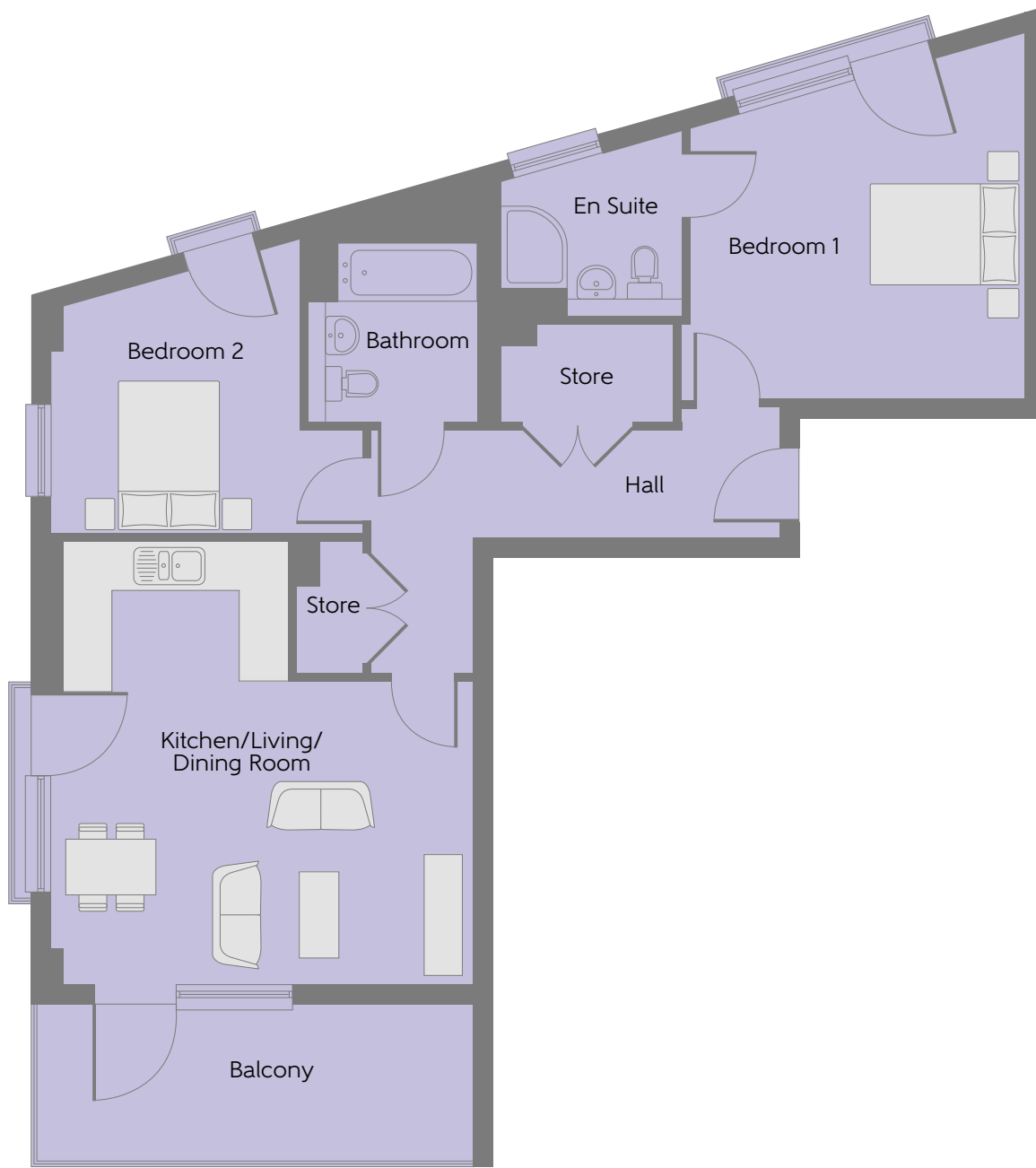
The Redgrave – Plots 45, 51, 57, 63, 69 & 75

Kitchen/Living/ Dining Room	5.43m x 5.07m	17'9" x 16'6"
Bedroom 1	4.07m x 3.91m	13'4" x 12'8"
Bedroom 2	3.77m x 3.20m	12'4" x 10'5"
Total area	75.4 sq. m.	812 sq. ft.

c/s - cycle store b/s - bin store L - Lift

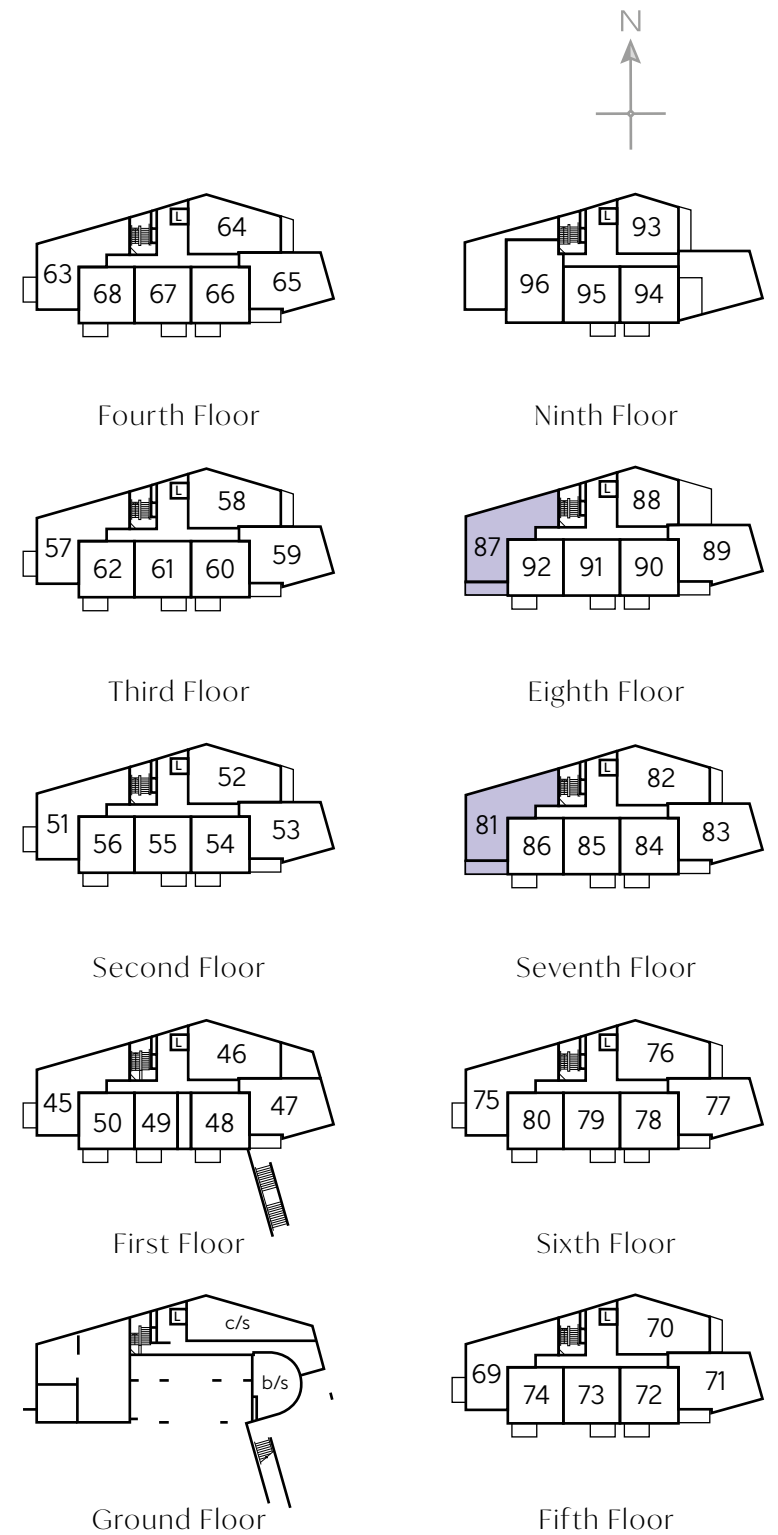
Furniture arrangements are for illustrative purposes only. Items are not included, nor to scale.

The items shown in this key may be subject to change, and positions could vary from those indicated on this floorplan. Please refer to Sales Advisor for details of your selected plot. External finishes and landscaping may vary. Please refer to Sales Advisor for further details. All dimensions are approximate and should not be used for carpet sizes, appliance spaces or furniture. We operate a policy of continuous improvement and individual features such as kitchen and bathroom layouts, doors, windows, garages and elevational treatments may vary from time to time. Consequently these particulars should be treated as general guidance only and do not constitute a contract, part of a contract or a warranty.



The Hodge - Plots 81 & 87

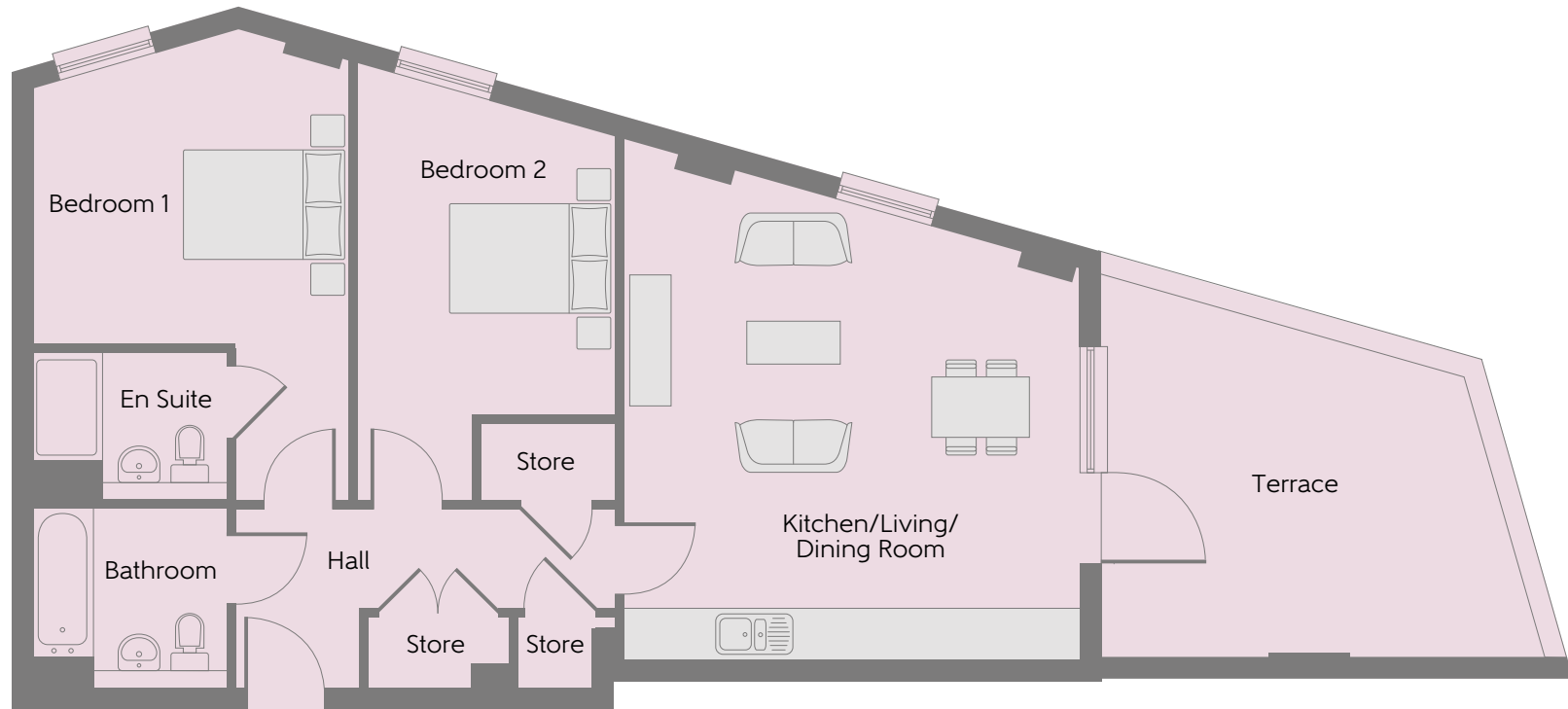
Kitchen/Living/ Dining Room	5.43m x 5.07m	17'9" x 16'6"
Bedroom 1	4.07m x 3.91m	13'4" x 12'8"
Bedroom 2	3.77m x 3.20m	12'4" x 10'5"
Total area	75.4 sq. m.	812 sq. ft.



c/s - cycle store b/s - bin store L - Lift

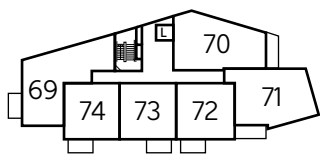
Furniture arrangements are for illustrative purposes only. Items are not included, nor to scale.

The items shown in this key may be subject to change, and positions could vary from those indicated on this floorplan. Please refer to Sales Advisor for details of your selected plot. External finishes and landscaping may vary. Please refer to Sales Advisor for further details. All dimensions are approximate and should not be used for carpet sizes, appliance spaces or furniture. We operate a policy of continuous improvement and individual features such as kitchen and bathroom layouts, doors, windows, garages and elevational treatments may vary from time to time. Consequently these particulars should be treated as general guidance only and do not constitute a contract, part of a contract or a warranty.

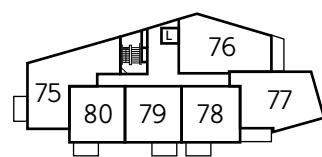


The Pinsent 1 - Plot 46

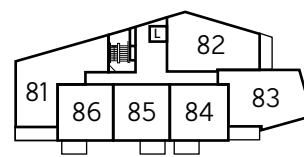
Kitchen/Living/ Dining Room	5.18m x 5.13m	17'0" x 16'8"
Bedroom 1	3.58m x 3.41m	11'7" x 11'2"
Bedroom 2	3.53m x 2.92m	11'6" x 9'6"
Total area	73.1 sq. m.	786 sq. ft.



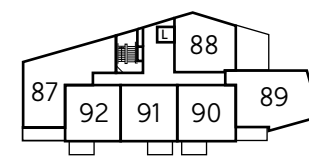
Fifth Floor



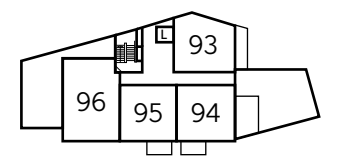
Sixth Floor



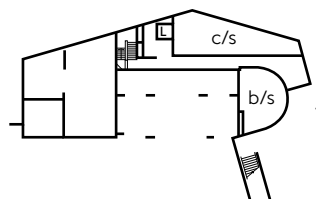
Seventh Floor



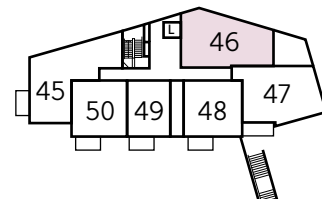
Eighth Floor



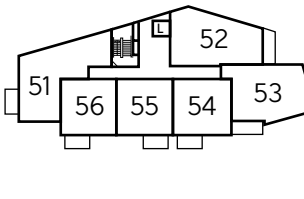
Ninth Floor



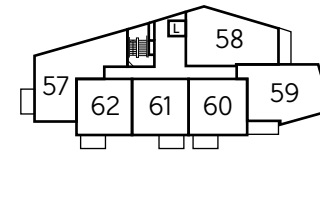
Ground Floor



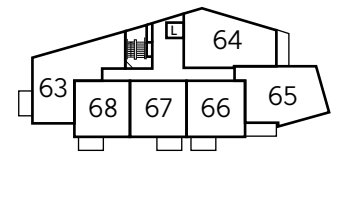
First Floor



Second Floor



Third Floor

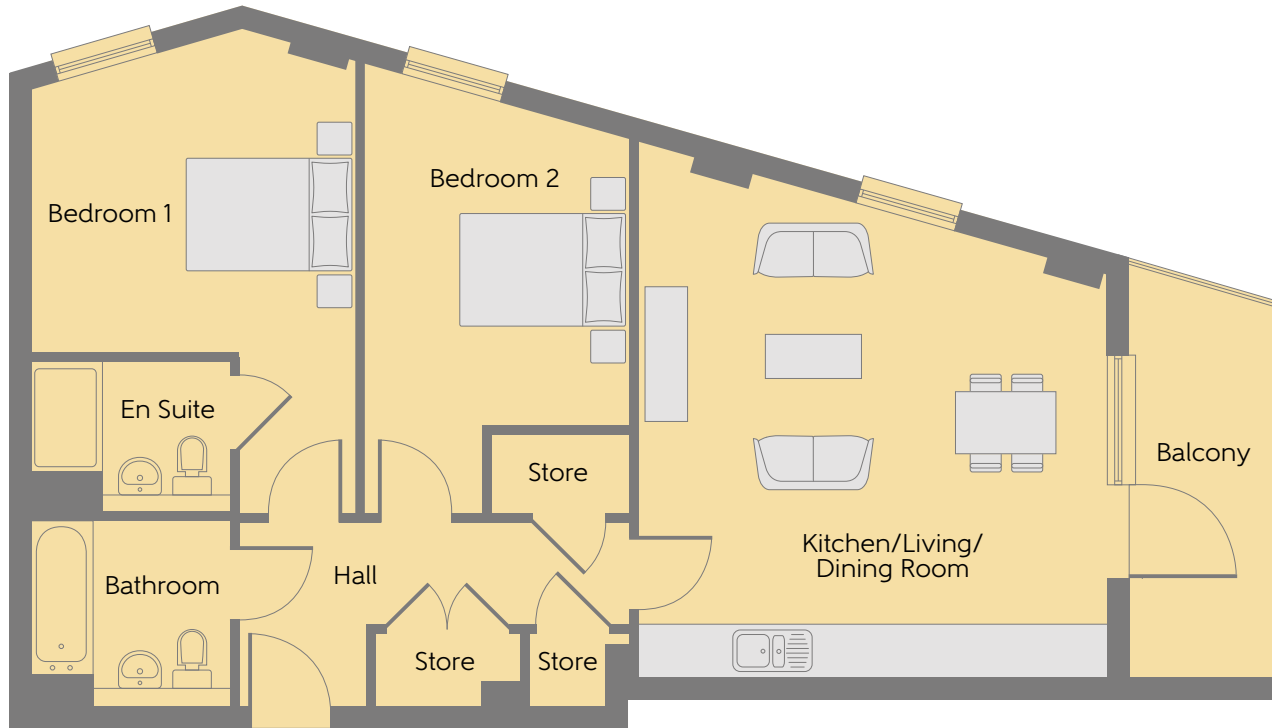


Fourth Floor

c/s - cycle store b/s - bin store L - Lift

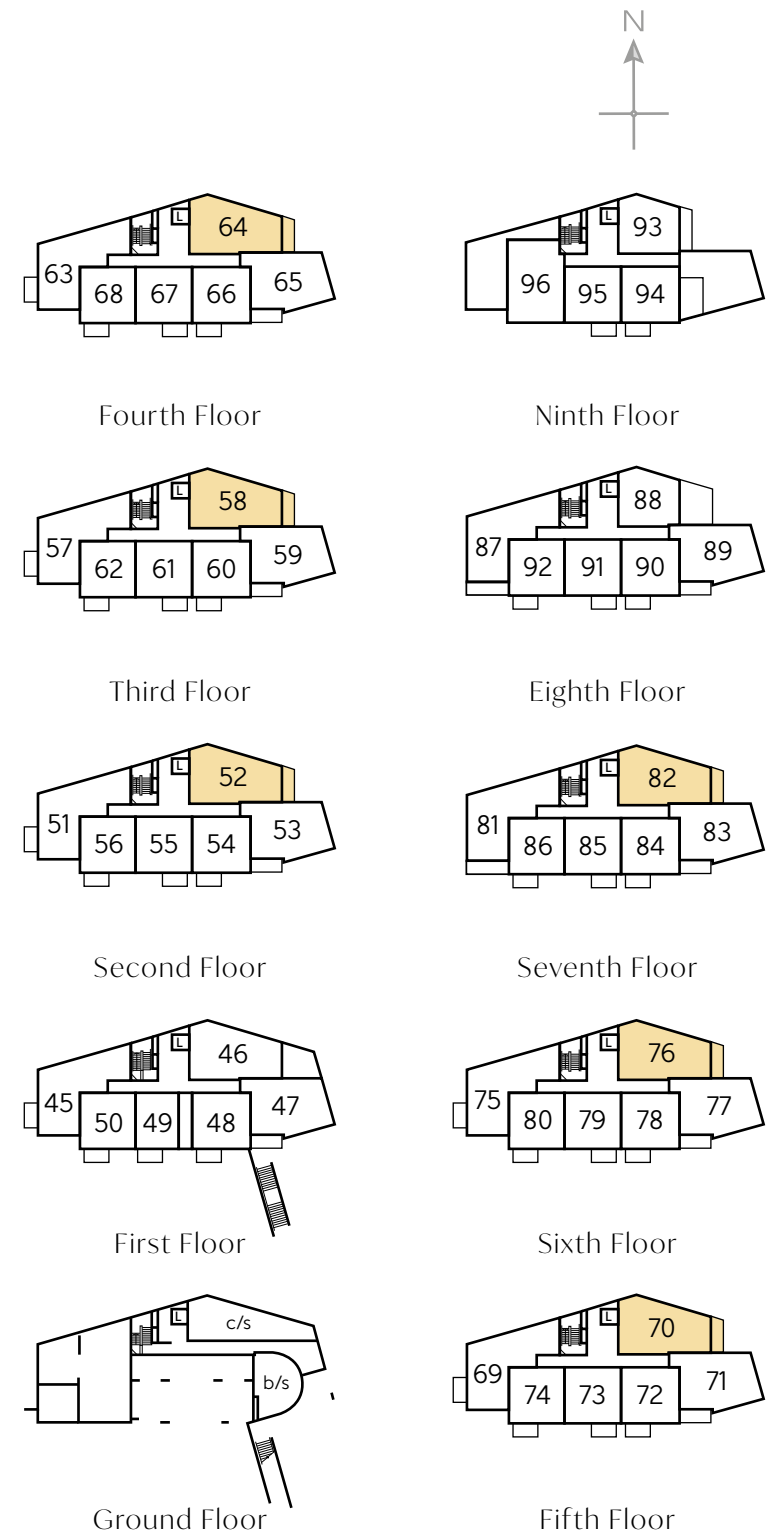
Furniture arrangements are for illustrative purposes only. Items are not included, nor to scale.

The items shown in this key may be subject to change, and positions could vary from those indicated on this floorplan. Please refer to Sales Advisor for details of your selected plot. External finishes and landscaping may vary. Please refer to Sales Advisor for further details. All dimensions are approximate and should not be used for carpet sizes, appliance spaces or furniture. We operate a policy of continuous improvement and individual features such as kitchen and bathroom layouts, doors, windows, garages and elevational treatments may vary from time to time. Consequently these particulars should be treated as general guidance only and do not constitute a contract, part of a contract or a warranty.



The Pinsent 2 – Plots 52, 58, 64, 70, 76 & 82

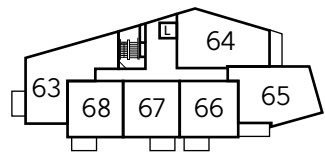
Kitchen/Living/ Dining Room	5.18m x 5.13m	17'0" x 16'8"
Bedroom 1	3.58m x 3.41m	11'7" x 11'2"
Bedroom 2	3.53m x 2.92m	11'6" x 9'6"
Total area	73.1 sq. m.	786 sq. ft.



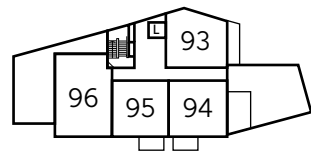
c/s - cycle store b/s - bin store L - Lift

Furniture arrangements are for illustrative purposes only. Items are not included, nor to scale.

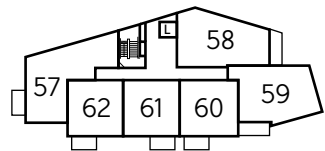
The items shown in this key may be subject to change, and positions could vary from those indicated on this floorplan. Please refer to Sales Advisor for details of your selected plot. External finishes and landscaping may vary. Please refer to Sales Advisor for further details. All dimensions are approximate and should not be used for carpet sizes, appliance spaces or furniture. We operate a policy of continuous improvement and individual features such as kitchen and bathroom layouts, doors, windows, garages and elevational treatments may vary from time to time. Consequently these particulars should be treated as general guidance only and do not constitute a contract, part of a contract or a warranty.



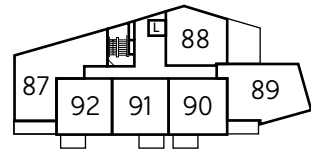
Fourth Floor



Ninth Floor



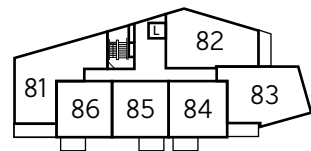
Third Floor



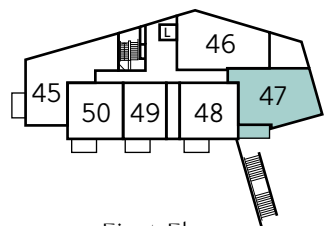
Eighth Floor



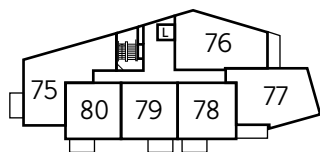
Second Floor



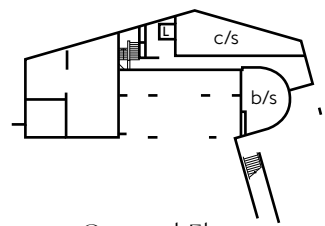
Seventh Floor



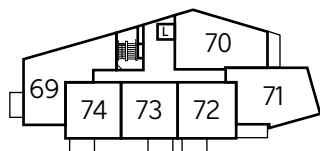
First Floor



Sixth Floor



Ground Floor



Fifth Floor



The Reed 1 - Plot 47

Kitchen/Living/ Dining Room	4.84m x 4.61m	15'9" x 15'1"
Bedroom 1	3.88m x 3.37m	12'7" x 11'1"
Bedroom 2	3.51m x 2.26m	11'5" x 7'4"
Total area	69.4 sq. m.	746 sq. ft.

c/s - cycle store b/s - bin store L - Lift

Furniture arrangements are for illustrative purposes only. Items are not included, nor to scale.

The items shown in this key may be subject to change, and positions could vary from those indicated on this floorplan. Please refer to Sales Advisor for details of your selected plot. External finishes and landscaping may vary. Please refer to Sales Advisor for further details. All dimensions are approximate and should not be used for carpet sizes, appliance spaces or furniture. We operate a policy of continuous improvement and individual features such as kitchen and bathroom layouts, doors, windows, garages and elevational treatments may vary from time to time. Consequently these particulars should be treated as general guidance only and do not constitute a contract, part of a contract or a warranty.



The Reed 2 – Plots 53, 59, 65, 71, 77 & 83

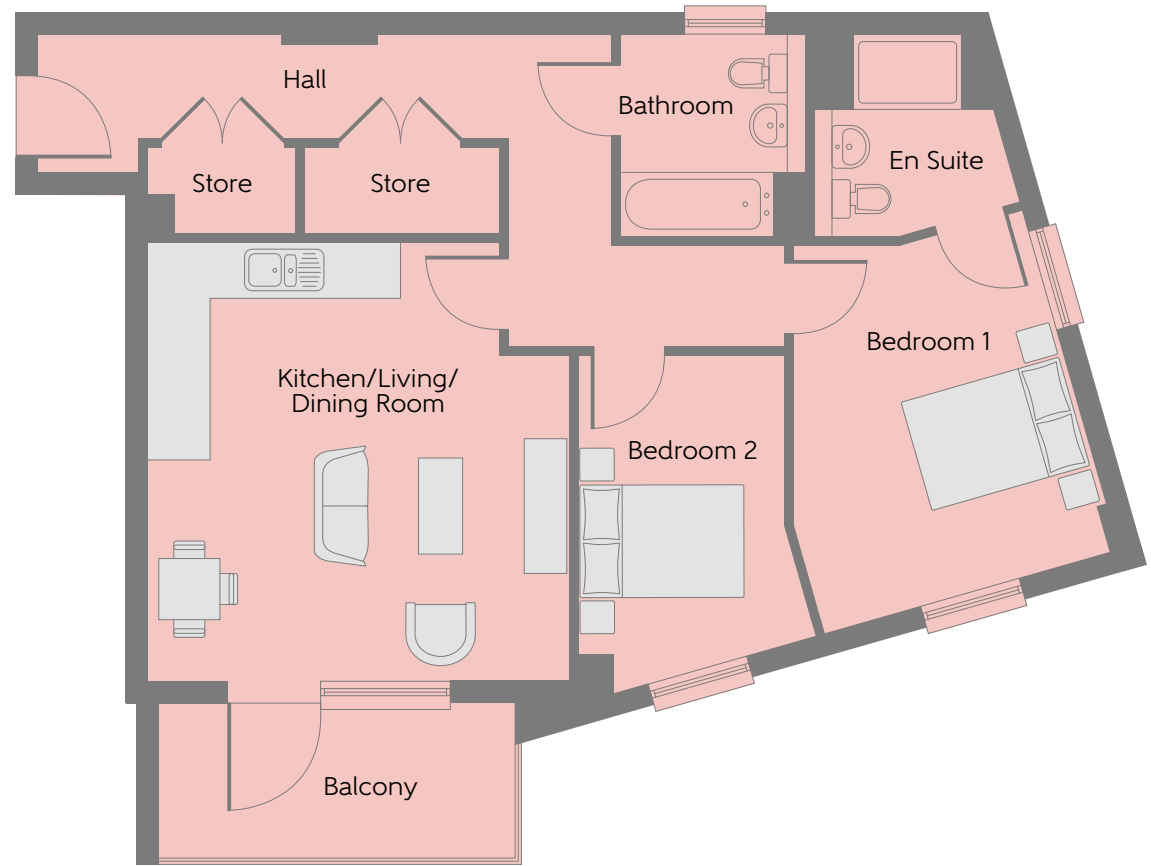
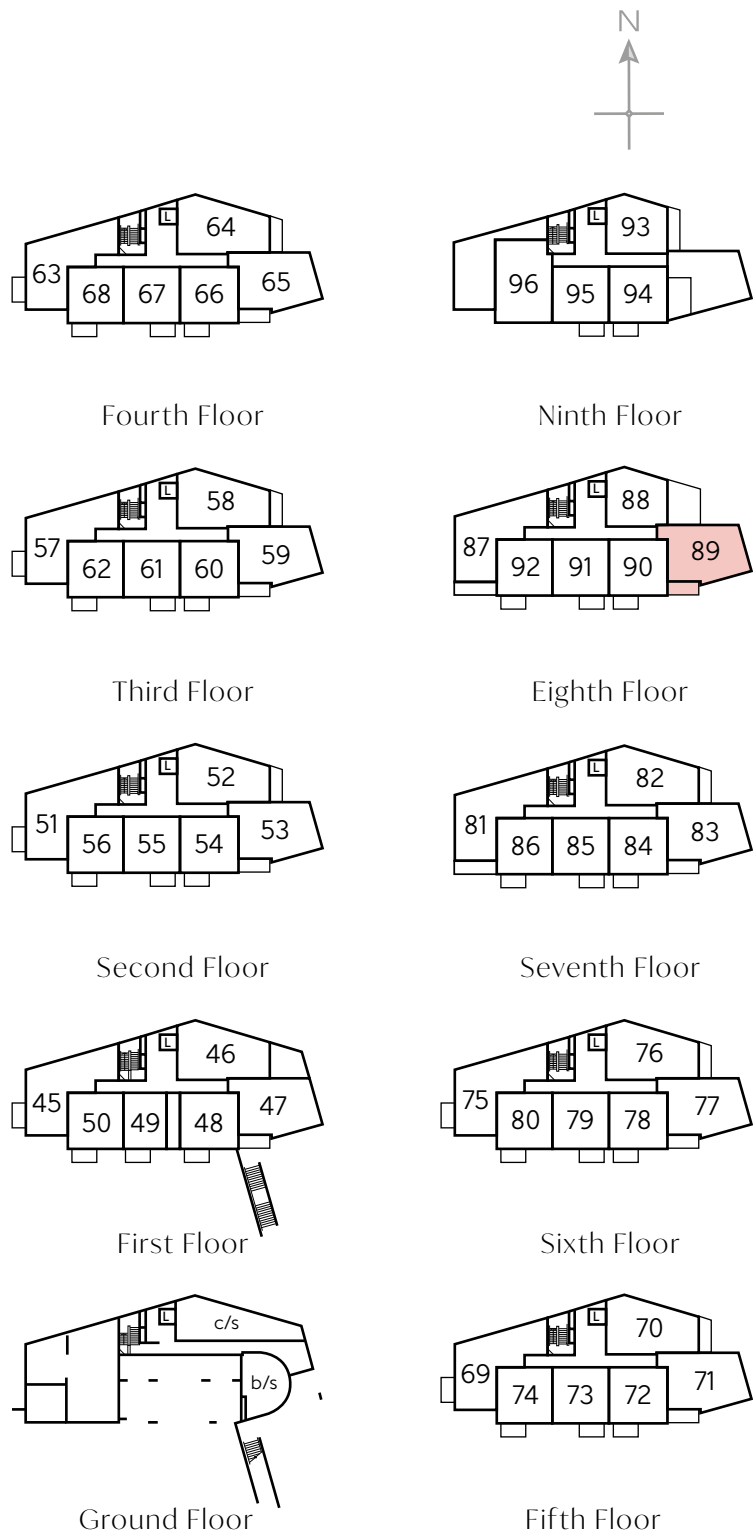
Kitchen/Living/ Dining Room	4.84m x 4.61m	15'9" x 15'1"
Bedroom 1	3.88m x 3.37m	12'7" x 11'1"
Bedroom 2	3.51m x 2.26m	11'5" x 7'4"
Total area	69.4 sq. m.	746 sq. ft.



c/s - cycle store b/s - bin store L - Lift

Furniture arrangements are for illustrative purposes only. Items are not included, nor to scale.

The items shown in this key may be subject to change, and positions could vary from those indicated on this floorplan. Please refer to Sales Advisor for details of your selected plot. External finishes and landscaping may vary. Please refer to Sales Advisor for further details. All dimensions are approximate and should not be used for carpet sizes, appliance spaces or furniture. We operate a policy of continuous improvement and individual features such as kitchen and bathroom layouts, doors, windows, garages and elevational treatments may vary from time to time. Consequently these particulars should be treated as general guidance only and do not constitute a contract, part of a contract or a warranty.



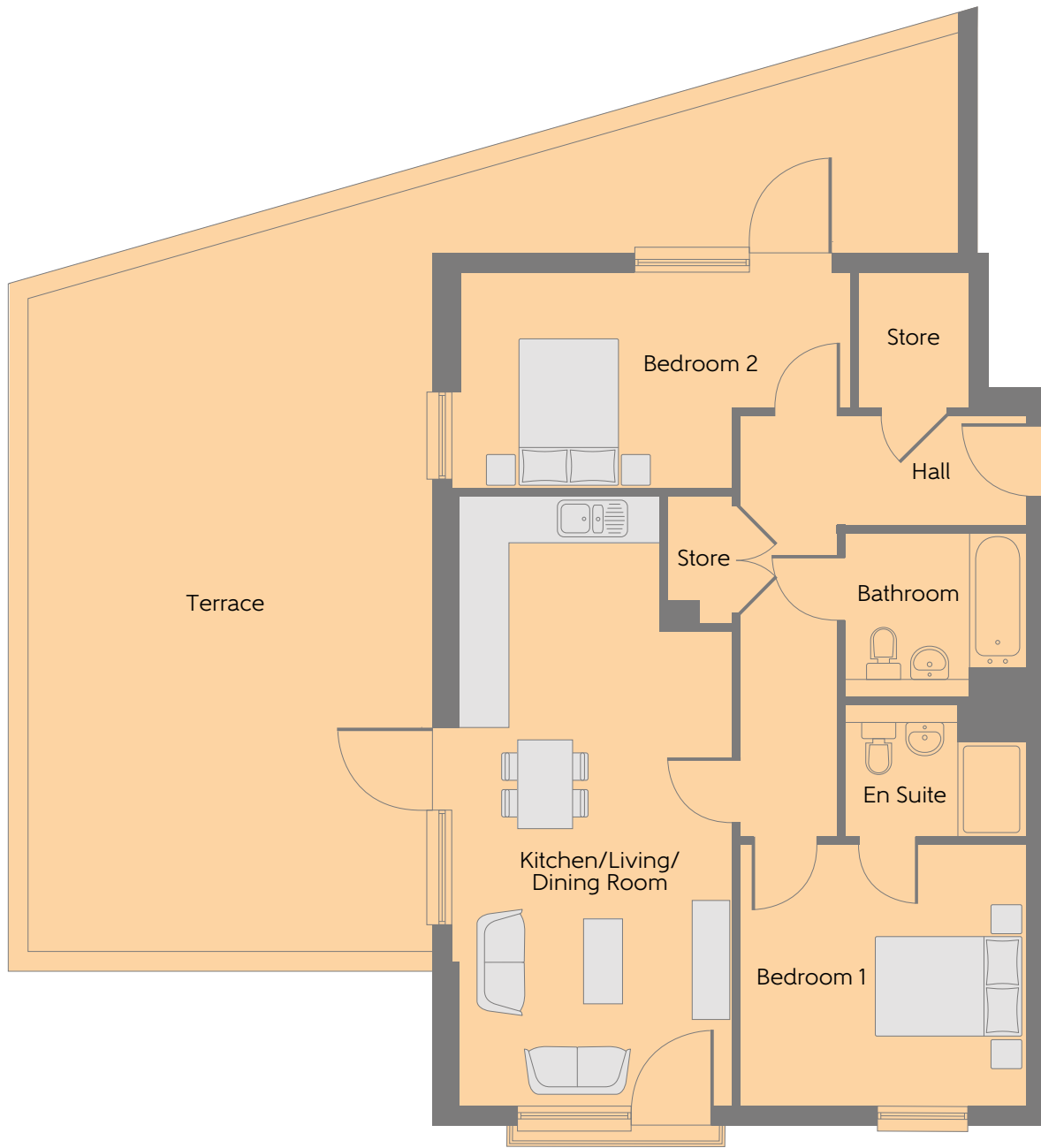
The Cracknell - Plot 89

Kitchen/Living/ Dining Room	4.84m x 4.61m	15'9" x 15'1"
Bedroom 1	3.88m x 3.37m	12'7" x 11'1"
Bedroom 2	3.51m x 2.26m	11'5" x 7'4"
Total area	69.3 sq. m.	745 sq. ft.

c/s - cycle store b/s - bin store L - Lift

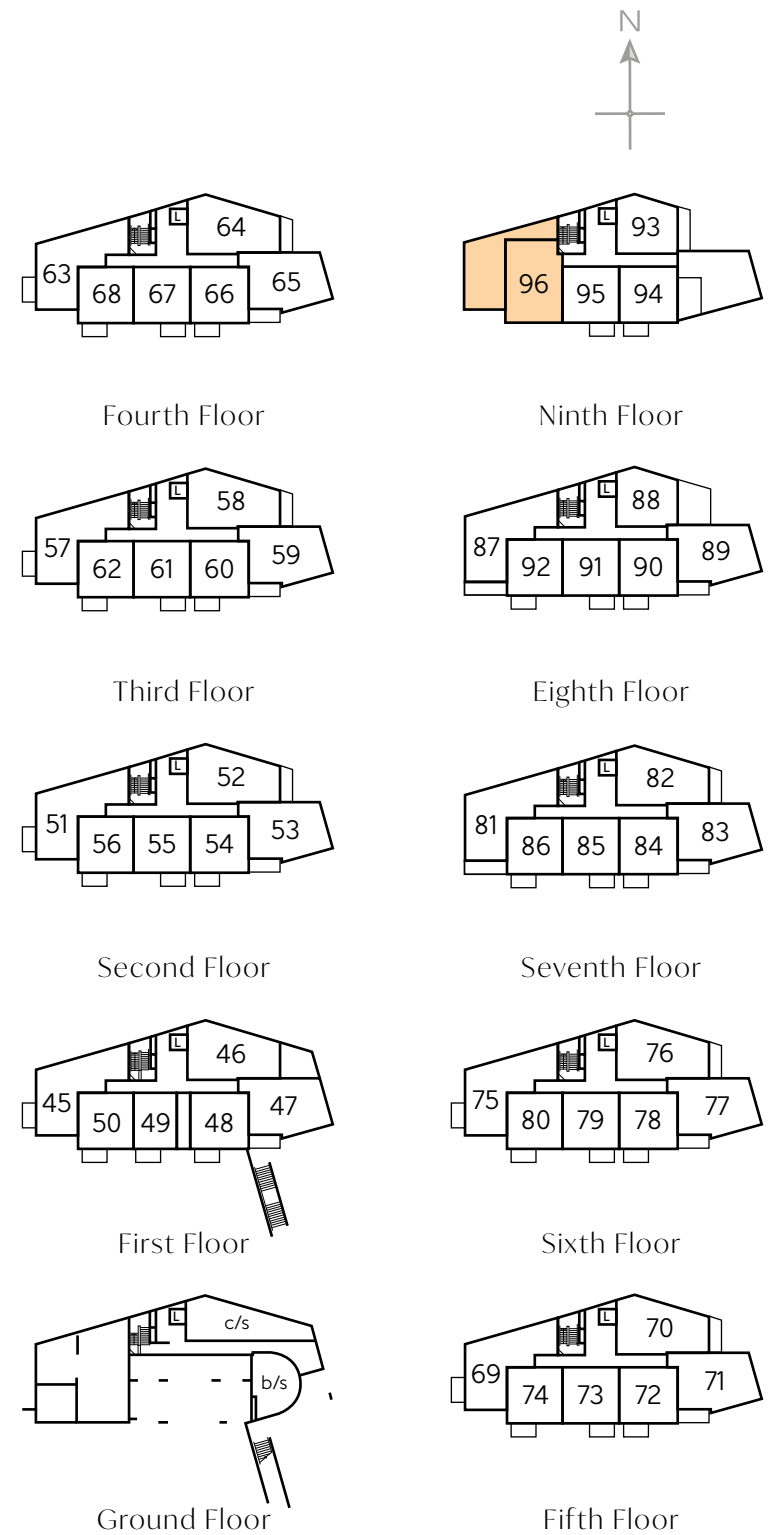
Furniture arrangements are for illustrative purposes only. Items are not included, nor to scale.

The items shown in this key may be subject to change, and positions could vary from those indicated on this floorplan. Please refer to Sales Advisor for details of your selected plot. External finishes and landscaping may vary. Please refer to Sales Advisor for further details. All dimensions are approximate and should not be used for carpet sizes, appliance spaces or furniture. We operate a policy of continuous improvement and individual features such as kitchen and bathroom layouts, doors, windows, garages and elevational treatments may vary from time to time. Consequently these particulars should be treated as general guidance only and do not constitute a contract, part of a contract or a warranty.



The Laurie – Plot 96

Kitchen/Living/ Dining Room	7.63m x 3.52m	25'0" x 11'6"
Bedroom 1	3.52m x 3.25m	11'6" x 10'8"
Bedroom 2	4.88m x 2.67m	16'0" x 8'9"
Total area	72.4 sq. m.	778 sq. ft.



c/s - cycle store b/s - bin store L - Lift

Furniture arrangements are for illustrative purposes only. Items are not included, nor to scale.

The items shown in this key may be subject to change, and positions could vary from those indicated on this floorplan. Please refer to Sales Advisor for details of your selected plot. External finishes and landscaping may vary. Please refer to Sales Advisor for further details. All dimensions are approximate and should not be used for carpet sizes, appliance spaces or furniture. We operate a policy of continuous improvement and individual features such as kitchen and bathroom layouts, doors, windows, garages and elevational treatments may vary from time to time. Consequently these particulars should be treated as general guidance only and do not constitute a contract, part of a contract or a warranty.

Specification

FINISHES

		1 & 2 Bedroom Apartments	3 Bedroom Apartments
Ceilings	Crown White Matt Emulsion	•	•
Walls	Crown White Matt Emulsion	•	•
Window Cills	White Gloss MDF	•	•
Skirting	White Satinwood MDF Single Grooved 94 x 14.5mm	•	•
Architrave	White Satinwood MDF Single Grooved 69 x 18mm	•	•
Entrance Doors	Apartment - White Satinwood inner & Grey (RAL 7047) (Fire Rated Solid Core)	•	•
Internal Doors	White Satinwood Vertical 5 Panel Door (Check Fire Rating)	•	•
Ironmongery	SAA Door Furniture	•	•

KITCHEN

Appliance Extractor	System 3 - MEV Ceiling Mounted Fan inc Humidistat	•	•
Carcass	Premium Grade 18 colour matched carcass.	•	•
Frontals	Bellway Group "Band B" Choice	•	•
Units	Frontal Matching Table Ends	•	•
Worktops	40mm Square Edge worktops with upstands	•	•
Splashback	S/S Over Hob 600mm wide from worktop to underside of extractor Hood	•	•
Kitchens Sink	Linear (EL9502/TAF3CM) 1 bowl S/S sink with waste kit & Chrome tap	•	•
Appliances Oven	Under counter Oven (ZHC 60156X)	•	•
Appliances Hob	4 Burner Electric Hob	•	•
Dishwasher	Dishwasher included	•	•
Extract Hood	Integrated Chimney Hood (ZHC 60156X)	•	•
Appliance Fridge Freezer	Fridge Freezer included	•	•
Appliance Washing Machine	Washing machine included	•	•

WETROOMS

Bathroom - WC	Roca DEBBA (A347996000) Back to wall Concealed Cistern Duplo WC L 820 4.5l Flush	•	•
Bathroom - Basin	Roca Debba 500 x 420 basin, one tap hole - Semi pedestal	•	•
Bathroom - Bath	Roca Debba Malaga 1700 x 700 2TH	•	•
Bathroom - Brassware	Bristan Chrome (BWY PS BAS C) Pisa Basin Kixwer with Clicker Waste	•	•

MECHANICAL

Boiler	Electric Boiler	•	•
Controls	Myson Touch 2 Wifi Thermostat	•	•
Radiators	Underfloor heating circuits	•	•
Heated Towel Rails	Electric Only - 1200mm x 600mm (Bathrooms) & 1200mm x 500mm (En Suites)	•	•
Ventilation	Window Trickle Ventilators with Mechanical Extract Fans (system 3) CMEV	•	•

ELECTRICS

Safety - Fire	Detra white (1163) Mains Connected Smoke alarms	•	•
Safety - Heat	Detra White (1165) Heat Detector - Kitchen	•	•
Consumer Units	Electrium white (NUMB10HIFWNR/NMB15HIFWNR)	•	•
Sockets & Switches	Electrium VOLEX or DETA White fittings	•	•
Shaver Point	En suites & Bathroom	•	•
Lighting	Electrium (D6677NR) Pendant Fitting to Habitable Rooms	•	•
Lighting - Kitchen	Downlighters Electrium Appleby (D1065WHNR-W)	•	•
Lighting Bathroom & En Suites	Downlighters Electrium Appleby (D1065WHNR-W)	•	•
Media	Electrium - 1x Satellite, 2x Aerial, 1x BT, 1x DAB, 2x Double Sockets & 1x CAT5 E**	•	•
Communications - TV	TV Point to Lounge & Bed 1	•	•
Communications - Voice	Telephone Point to Lounge/Diner	•	•
Communications - Data	CAT 5 Network Point to Lounge	•	•
Communications - Access	Audio Entry System	•	•
Broadband	Ultrafast Fibre Connectivity Openreach	•	•

EXTERNALS

Shared Parking Areas	Bitmac Black *	•	•
Balcony	Balcony **	•	•

Make your new home as individual as you are with Additions



Every Bellway home comes with high quality fittings as standard, but to add that personal touch you can also choose to upgrade from our range of options to make sure your new home feels distinctly different.

Most important of all, because we recognise that you want your new home to reflect your personal taste from day one, we will make sure that all your Additions choices are expertly fitted and finished by the time you move in.

Choose from our range of Additions options covering:

Kitchens

- Upgraded integrated or freestanding washer/dryer
- Upgraded integrated fridge/freezer
- Upgraded integrated or freestanding dishwasher
- Upgraded integrated or freestanding washing machine
- Upgrade to composite worktops
- Double oven
- Upgrade hob

Flooring

- Selection of carpets, Vinyl or laminate

Tiling

- Full and half height tiling
- Comprehensive upgrade options

Electrical

- Additional sockets
- Additional switches
- Chrome sockets
- Chrome switches
- Under-unit lighting
- Recessed lighting
- BT and TV points

Miscellaneous

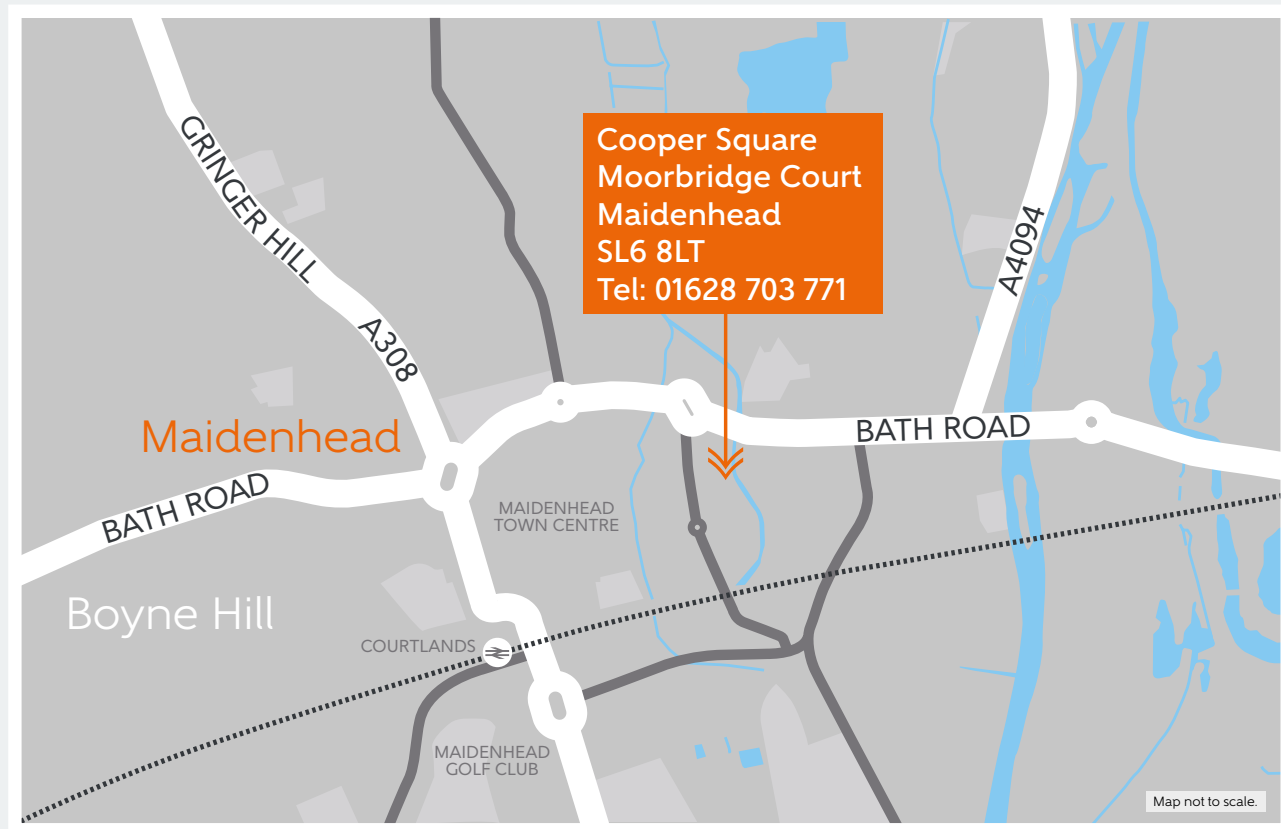
- Wardrobes



Although we make every effort to ensure that as many Additions choices as possible are available to you, not every development offers all the range shown. Please be aware that orders can only be accepted up to certain stages of the construction process. Therefore we recommend that you consult our Sales Advisor.



How to find us



Bellway Homes Limited (Thames Valley Division)
Pacific House, Imperial Way, Reading, Berkshire RG2 0TD
Telephone: 0118 933 8021 bellway.co.uk