



This lovely home has been beautifully maintained and presented, benefiting from double glazing and gas central heating and has many character features making it a comfortable, warm and welcoming home. The Property is listed with the Three Year Devon Rule

Woodway Street | Chudleigh | TQ13 0JU





PROPERTY TYPE

House



SIZE

951 sq ft



LOCATION

Chudleigh Town



AGE

1960's



BEDROOMS

3



RECEPTION ROOMS

1



BATHROOMS

1



WARMTH

Gas Central Heating



PARKING

Off Road Parking



OUTSIDE SPACE

Courtyard Gardens



EPC RATING

73 C



COUNCIL TAX BAND

B



in a nutshell...

- Kitchen Diner
- Lovely sitting room
- Two First Floor Bedrooms
- Attractive Family Bathroom
- Large Second Floor Bedroom
- Enclosed Courtyard to Rear
- Front Courtyard
- Two Off Road Parking Spaces
- The Property is listed with the 3 Year Devon Rule





the details...

This lovely home has been beautifully maintained and presented, benefiting from double glazing and gas central heating and has many character features making it a comfortable, warm and welcoming home.

Access to the property is through an open porch into the hallway, with stairs rising to first floor and door into the light and airy sitting room which benefits from a large window to the front elevation. It has been tastefully furnished with modern décor, wood flooring and a Victorian style fireplace and surround which makes a lovely focal point to the room. The kitchen dining room has been refitted with pale green fronted base and wall mounted units, incorporating a sink with mix tap over, integral oven with hob and extractor hood above and spaces for a washing machine and fridge/freezer. The room also benefits from an understairs storage cupboard and two windows and a half glazed door to rear, giving lots of natural light. A lovely space to enjoy a meal with friends and family.

On the first floor are two double bedrooms, one having natural wood flooring and the family bathroom which has also been refitted with a modern suite comprising bath with shower over and shower screen, pedestal wash hand basin and low level w.c. On the second floor in the spacious main bedroom which benefits from velux windows to both front and rear elevations.

Outside to the front of the property is a parking area for two cars, which lead into the enclosed front enclosed garden, which has been landscaped to provide seating where you can enjoy a family bar-be-cue. To the rear is an enclosed courtyard with a gate giving a rear access across the neighbouring property. There is a large wood shed on the drive ideal for bikes etc.

Tenure: Freehold

Council Tax Band B

Services: Mains gas central heating, electricity, water and sewerage

Broadband and Mobile Signal - Please visit

<https://checker.ofcom.org.uk> for availability.



Woodway Street, Chudleigh, Newton Abbot, TQ13

Approximate Area = 869 sq ft / 80.7 sq m

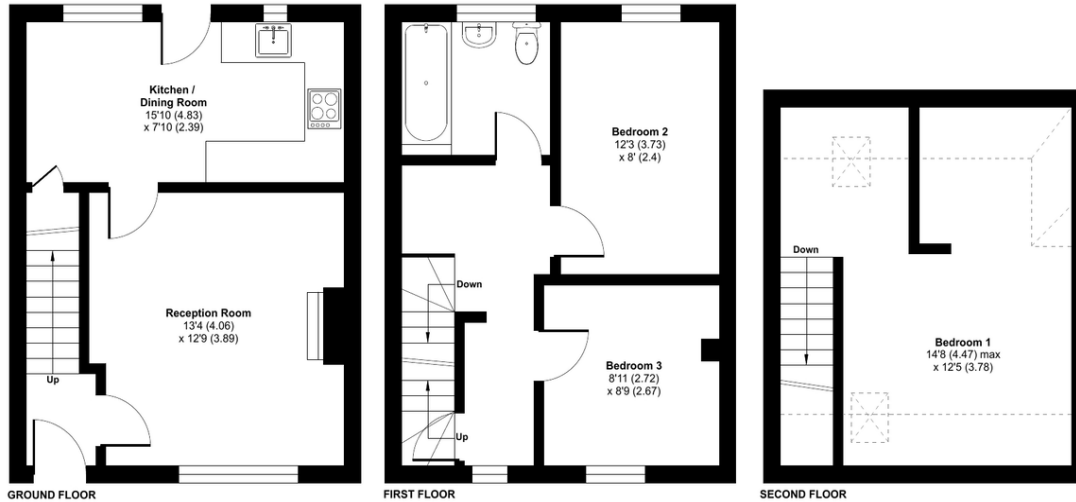
Limited Use Area(s) = 82 sq ft / 7.6 sq m

Total = 951 sq ft / 88.3 sq m

For identification only - Not to scale



Denotes restricted
head height



Floor plan produced in accordance with RICS Property Measurement Standards incorporating International Property Measurement Standards (IPMS2 Residential). © nrichcom 2024. Produced for Ashtons Complete (Complete Property). REF: 1111429



Our note. For clarification we have prepared these sales particulars as a general guide and have not carried out a detailed survey nor tested the services, appliances or fittings. Room sizes should not be relied upon for carpets or furnishings. If there are any important matters which are likely to affect your decision to buy, please contact us before viewing this property. These particulars, whilst believed to be accurate, are set out as a general outline only for guidance and do not constitute any part of an offer or contract. Intending purchasers should not rely on them as statements of representation of fact, but must satisfy themselves by inspection or otherwise as to their accuracy. No person in the employment of Complete Property Services has the authority to make or give any representation or warranty in respect of the property.

SKETCH PLAN FOR ILLUSTRATIVE PURPOSES ONLY. All measurements and sizes and locations of walls, doors, window fittings and appliances are shown conventionally and are approximate only and cannot be regarded as being a representation either by the Seller or his Agent. We hope that these plans will assist you by providing you with a general impression of the layout of the accommodation. The plans are not to scale nor accurate in detail. © Unauthorised reproduction prohibited.

As part of the service we offer we may recommend ancillary services to you which we believe will help with your property transaction. We wish to make you aware that should you decide to proceed we will receive a referral fee. This could be a fee, commission, payment or other reward. We will not refer your details unless you have provided consent for us to do so. You are not under any obligation to provide us with your consent or to use any of these services, but where you do you should be aware of the following referral fee information. You are also free to choose an alternative provider. To find out more about this, please speak to a member of the team.



the location...

A typical old Devon town, Chudleigh has numerous narrow lanes and passageways between quaint old cottages. It is located at the end of the Teign Valley, close to the Haldon Hills. Perhaps more to the point is that it is off the main road from Exeter to Plymouth, to which it owes its prosperity as a wool town from the 13th century onwards. Chudleigh is an ideal base for exploring the local countryside, the Dartmoor National Park and the English Riviera. The town has good local facilities including shops, church, public houses and a regarded primary school.

Shopping

Late night pint of milk: Spar/Co-op 0.1 mile
Town centre: Chudleigh 0.1 mile
Supermarket: Tesco 6.1 miles
Exeter: 10.7 miles
Newton Abbot: 7.5 miles

Relaxing

Beach: Teignmouth 7.9 miles
Play park: Fore Street 0.5 mile
Chudleigh Sport Centre: 0.1 mile
Haldon Forrest Park: 6 miles

Travel

Bus stop: Town Centre 0.1 mile
Train station: Newton Abbot 8 miles
Main travel link: A38 1.4 miles
Airport: Exeter 14.2 miles

Schools

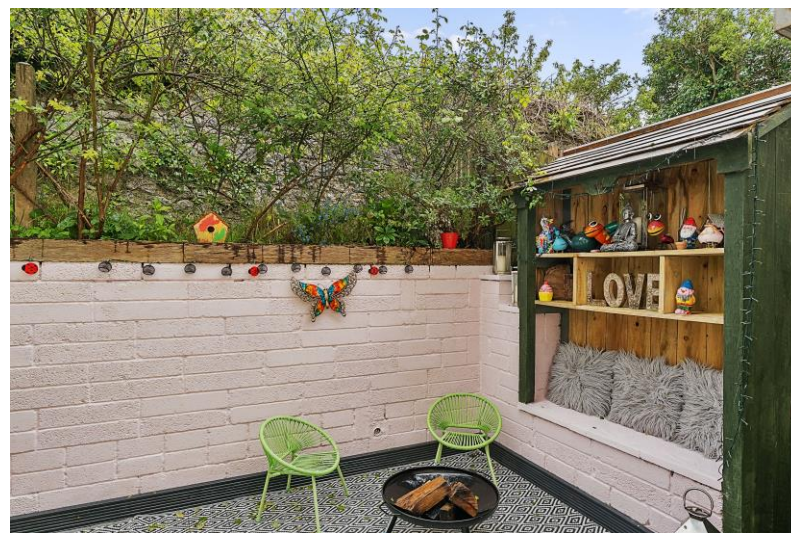
Chudleigh Primary School: 0.4 mile
Teign School: 5 miles (school bus)

Please check Google maps for exact distances and travel times.

Property postcode: **TQ13 0JU**

how to get there...

From Bovey Tracey travel to Chudleigh and continue into the town centre. At the war memorial turn left into Old Exeter Road and then second left into Woodway Street. Proceed up the hill where the property can be found on the right hand side.





Need a more complete picture? Get in touch with your local branch...

Tel [01626 832 300](tel:01626832300)
Email bovey@completeproperty.co.uk
Web completeproperty.co.uk

Complete
Emlyn House
Fore Street
Bovey Tracey
TQ13 9AD

Are you selling a property too? Call us to get a set of property details like these...

selling

letting

land &
new homes

signature
homes

complete.