



Richardson Crescent, Cheshunt, Herts







  
**Reynolds Salter**

An Outstanding Five Bedroom Detached House ideally located in a small cul de sac within this highly regarded residential location on the Cheshunt/Goffs Oak border, having been under the same ownership since it was built in 1999. This delightful family home provides bright and spacious accommodation, maintained to an exceptionally high standard throughout. Accommodation includes ; Lounge, Dining Room, Study, Fitted Kitchen, Utility Room, Five Bedrooms, Three Bath/ Shower Rooms (Two En-Suites) and a Ground floor Cloakroom. The rear garden is SOUTH FACING being mainly laid to lawn surrounded by various mature trees, bushes plants and shrubs, along with a paved patio/bbq and seating area. The front exterior is approached via a bloc paved driveway witch provides off road parking for numerous vehicles, and leads onto an attached DOUBLE GARAGE. Richardson Crescent is conveniently located for all local amenities, to include Brookfield Farm Retail Park, various local schools, and approximately 2 miles from Cuffley Railway Station (Moorgate).

- **Modern Detached House**
- **Five Bedrooms, Three Reception Rooms**
- **Excellent Decorative Order Throughout**
- **South Facing Rear Garden**
- **Double Garage and Parking**
- **Cuffley Railway Station 2 Miles**

EPC - C

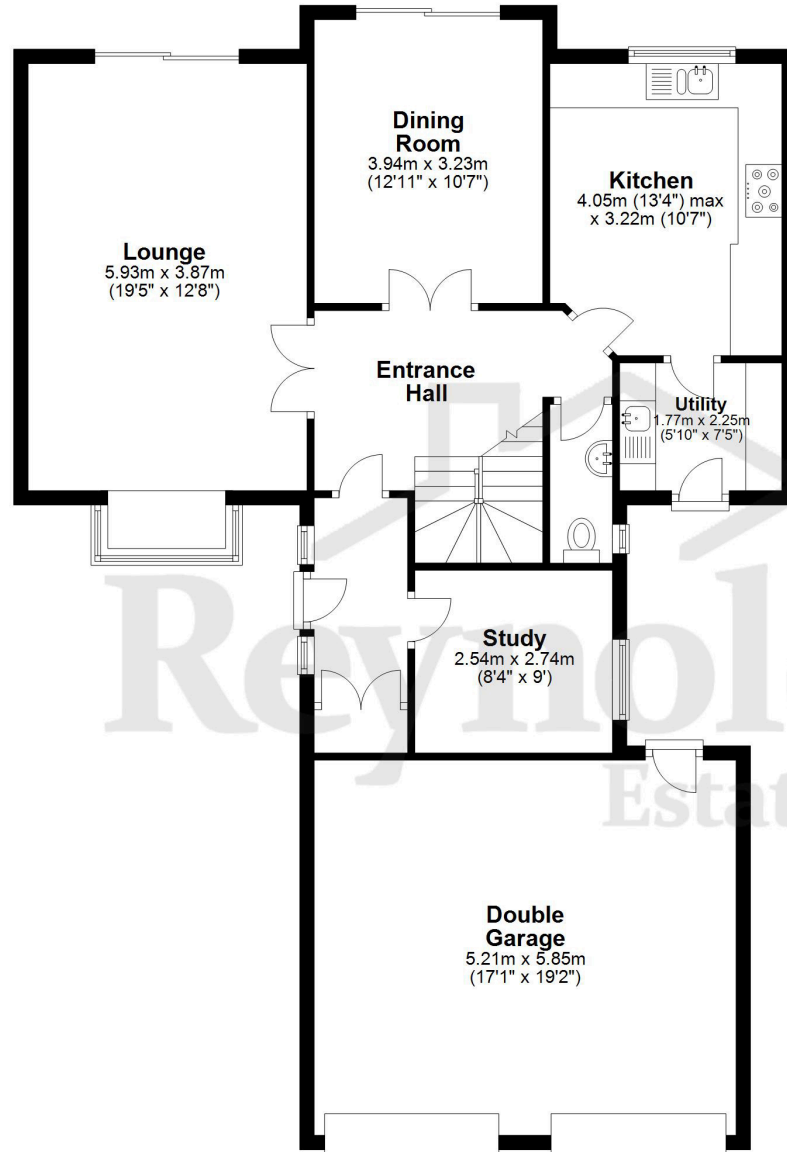
  
**Reynolds Salter**  
Estate Agents

25a High Road, Broxbourne,  
Herts, EN10 7HX  
[www.reynoldssalter.co.uk](http://www.reynoldssalter.co.uk)

01992 449000

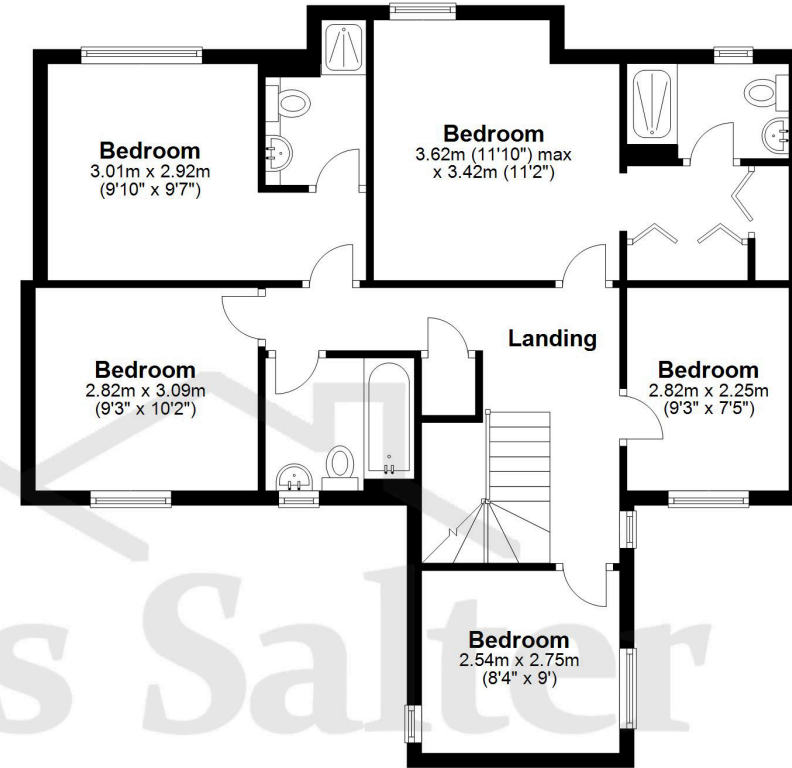
### Ground Floor

Approx. 110.7 sq. metres (1192.0 sq. feet)



### First Floor

Approx. 73.4 sq. metres (789.9 sq. feet)



Total area: approx. 184.1 sq. metres (1981.9 sq. feet)

FOR ILLUSTRATIVE PURPOSES ONLY. NOT TO SCALE. Whilst every attempt had been made to ensure the accuracy of the floor plan shown, all measurements, positioning, fixtures, features, fittings and any other data shown are an approximate interpretation for illustrative purposes only and are not to scale. No responsibility is taken for any error, omission, miss-statement or use of data shown.

Property marketing provided by [www.fotomarketing.co.uk](http://www.fotomarketing.co.uk)

#### Important notice

1. Particulars: These particulars are not an offer or contract, nor part of one. You should not rely on statements by Reynolds Salter in the particulars or by word of mouth or in writing ("information") as being factually accurate about the property, its condition or its value. Neither Reynolds Salter nor any joint agent has any authority to make any representations about the property, and accordingly any information given is entirely without responsibility on the part of the agents, seller(s) or lessor(s). 2. Photos etc: The photographs show only certain parts of the property as they appeared at the time they were taken. Areas, measurements and distances given are approximate only. Regulations etc: Any reference to alterations to, or use of, any part of the property does not mean that any necessary planning, building regulations or other consent has been obtained. A buyer or lessee must find out by inspection or in other ways that these matters have been properly dealt with and that all information is correct. 4. VAT: The VAT position relating to the property may change without notice.