

# Hull Road, Anlaby

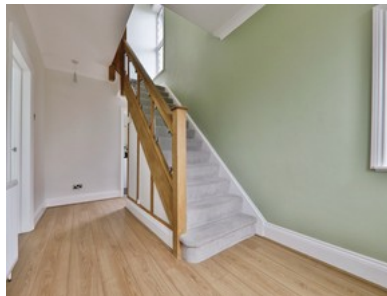
## INVITING OFFERS BETWEEN £250,000 - £270,000



**beercocks**  
valuing people, not just houses



- ✔ Offering Stunning Views Over Anlaby Common
- ✔ Three Bedrooms, Lounge, Dining Room, Kitchen
- ✔ Excellent Off-street Parking And Large Garage
- ✔ Enclosed Rear Sunny Garden
- ✔ Easy Access To Well-regarded Schools And Amenities
- ✔ Freehold
- ✔ Council Tax Band C
- ✔ Epc D



Bedroom  3 Bathroom  1 Reception  2

Guide Price

**£250,000**