

**SJ Stephens Associates**

Savernake Barn, Stokke Common  
Great Bedwyn  
Marlborough  
Wiltshire SN8 3LL  
01672 871862  
www.sjstephens.co.uk

JOB TITLE  
ORCHARD WAY

DRAWING TITLE  
SOFT LANDSCAPE PLAN – TREES,  
HEDGES & GRASS AREAS

DRAWING NUMBER  
1278-03.1

REV  
A

REVISIONS

SCALE  
1:200 at A1

DATE  
MAR 24

DRAWN BY  
cf

**Key**

- Crown spread: retained trees
- Root Protection Area
- New Tree
- New Hedge
- New Lawn
- New Wildflower Area

**Boundary hedge:**  
90/120cm bare root plants in a double staggered row,  
at 5 plants per metre with 30cm between rows and the plants  
40cm apart within the row

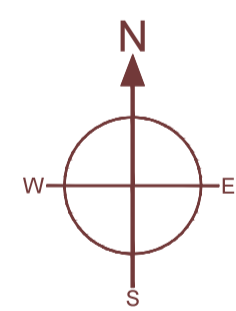
**Hedging**

%	Species
50	Hawthorn
10	Dogwood
10	Field maple
10	Gueldeer rose
10	Hazel
5	Privet
5	Wayfaring tree
Total - 100%	

*Crataegus monogyna*  
*Cornus sanguinea*  
*Acer campestre*  
*Viburnum opulus*  
*Corylus avellana*  
*Ligustrum vulgare*  
*Viburnum lantana*

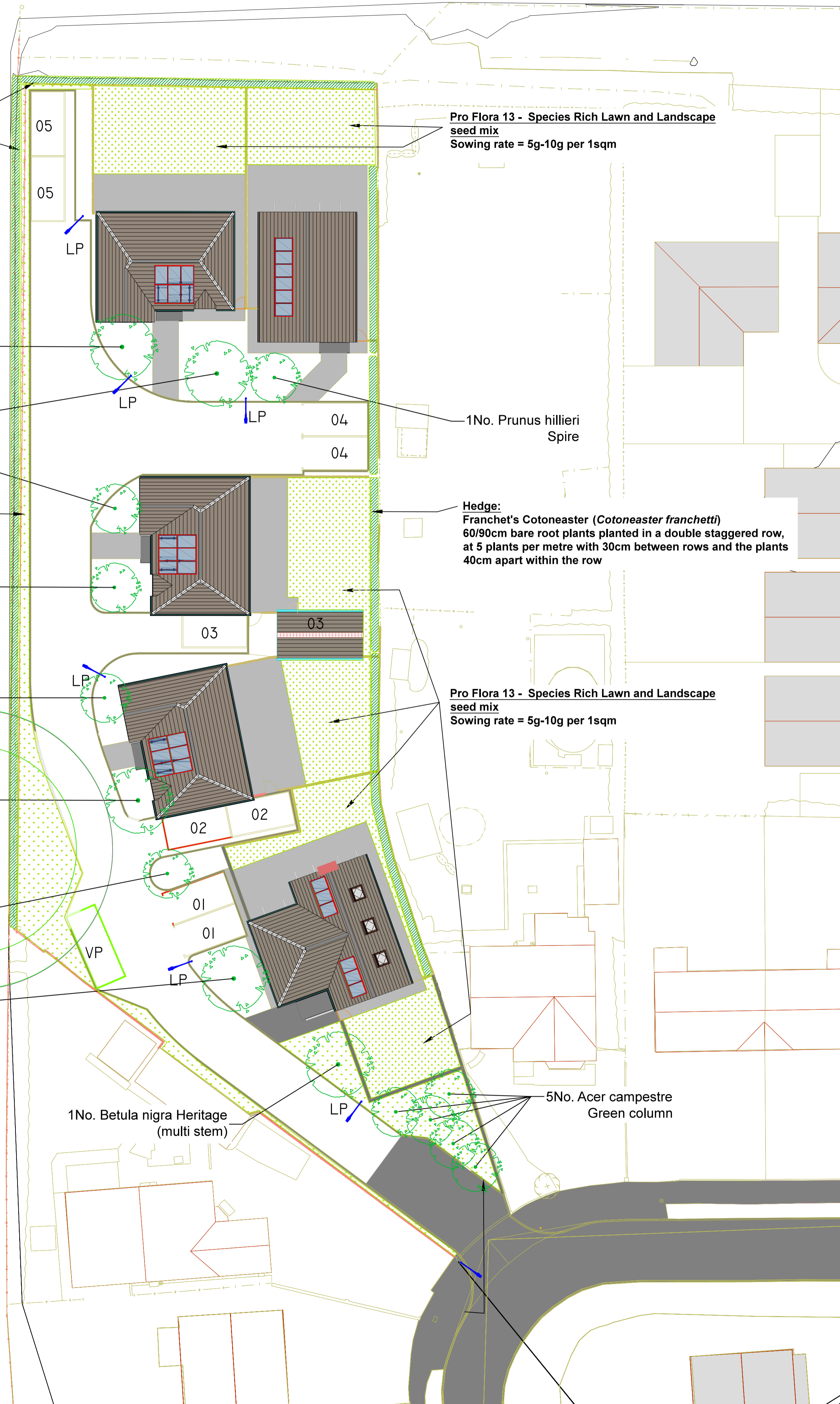
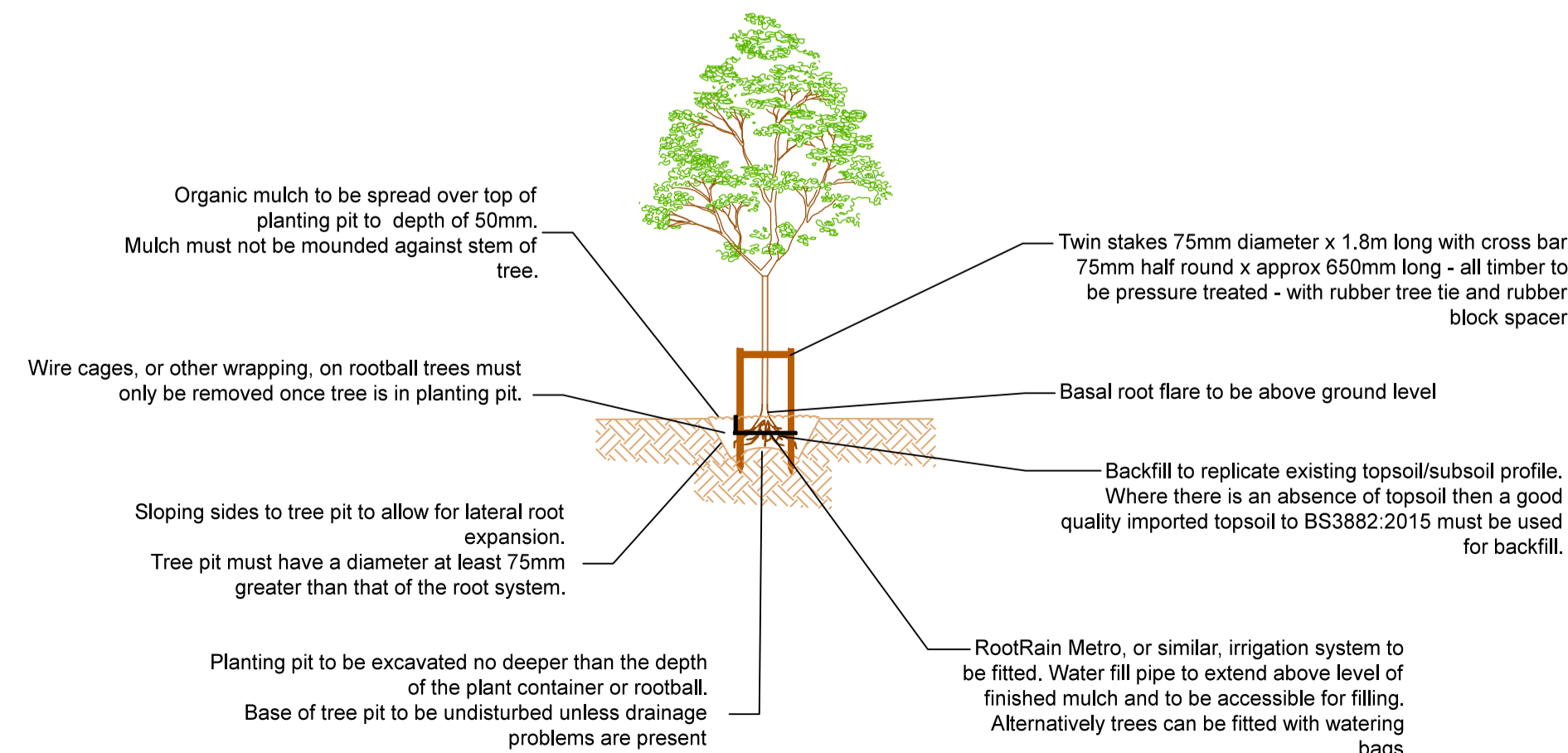
**Pro Flora 8 - Legacy General purpose, wildflower  
and grass seed mix**  
Sowing rate = 5g per 1sqm

PLANT SCHEDULE					
TREES					
Species	Size	Height	Quantity	Root type	Position
Acer campestre Green Column	12-14cm girth heavy standard	3.5-4m	5	Containerised - preferably white pot, or rootball	As shown on plan
Amelanchier arboorea Robin Hill	12-14cm girth heavy standard	3.5-4m	2	Containerised - preferably white pot, or rootball	As shown on plan
Betula nigra Heritage	Multi stem	3.5-4m	2	Containerised - preferably white pot, or rootball	As shown on plan
Crataegus prunifolia Splendens	10-12cm girth selected standard	3-3.5m	1	Containerised - preferably white pot	As shown on plan
Malus Evereste	12-14cm girth selected standard	3.5-4m	3	Containerised - preferably white pot	As shown on plan
Prunus hillieri Spire	12-14cm girth heavy standard	3.5-4m	2	Containerised - preferably white pot, or rootball	As shown on plan
HEDGES AND GRASS/WILDFLOWER AREAS					
Refer to specification shown on the plan for hedge plant sizes, planting density, seed mixes and sowing rates.					



Scale  
0 5m 10m

**TREE PLANTING DETAIL**



**1. GROUND PREPARATION - ALL AREAS**  
Unwanted surface vegetation should be removed by the application of a suitable selective herbicide. Sufficient time must be allowed for the application to be effective, and if required, a repeat application should be made. Protection of retained planting, specifically retained trees, is paramount and care must be taken to avoid any damaging effects from the use of herbicide in their vicinity. Herbicides must only be applied by trained and certificated operatives and in accordance with best practice and to the manufacturer's instructions.

**2. PREPARATION OF LAWN AREAS**  
Rotavate areas to be seeded to a minimum depth of 150mm. Remove all debris exceeding 50mm in any dimension brought to the surface including stones, vegetation and rubbish. Ensure 100mm minimum depth of topsoil over all areas. Rake and roll the area to produce a firm and level seed bed. Reduce top 30mm of soil to a fine tilth not exceeding 10mm particles.

**3. SOWING SPECIES RICH LAWN SEED**  
Sow in March/April or August/September. Regularly mix seed to ensure even species distribution when broadcasting. Bulk up the seed with either Rehofix MK1500 Bulking Granules at 1 part seed to 5 parts bulking granules, or with silica sand at 1 part seed to 10 parts sand. Sow at 5-10g per square metre. Rake to mix the seed into soil and roll with a lightweight roller to firm the seed bed.

**4. MAINTENANCE OF SPECIES RICH LAWNS**  
**First Year:**  
First cut to 5cm March/April (Spring seeding first cut in May)  
Cut the sward to a height of 5-7cm every two months or when the sward reaches 15cm. Remove all the cuttings.  
Final cut - September/October and remove all cuttings.  
**Future Years:**  
Either cut to 5-7cm every two weeks, or leave to flower as desired and cut in August to October. Remove all cuttings.

**5. PREPARATION FOR WILDFLOWER AREAS**  
Remove all rubbish and stones over 30mm in any dimension. Cultivate topsoil to a minimum depth of 10mm and not exceeding 25mm. Grade area, filling in any hollows. Create a fine surface tilth.

**6. SOWING WILDFLOWER SEED MIX**  
Sow in March/April or August/September. Regularly mix seed to ensure even species distribution when broadcasting. Bulk up the seed with either Rehofix MK1500 Bulking Granules at 1 part seed to 5 parts bulking granules, or with silica sand at 1 part seed to 10 parts sand. Sow at 5g per square metre. Rake to mix the seed into soil and roll with a lightweight roller to firm the seed bed.

**7. MAINTENANCE OF WILDFLOWER AREAS**  
Dig out or spot treat any perennial weeds.  
**First Year:**  
First cut to 5cm March/April (Spring seeding first cut in May)  
Cut the sward to a height of 5-7cm every two months or when the sward reaches 15cm. Remove all the cuttings.  
Final cut - September/October and remove all cuttings.  
**Future Years:**  
First cut 5-7cm March/April.  
Second cut 5-7cm August to October. Remove all cuttings.

**8. HEDGE, SHRUB AND PERENNIAL PLANTING**  
Cultivation and planting to be carried out in suitable weather, when soil is not waterlogged or in freezing conditions. Cultivate planting areas to provide a minimum depth of 300mm of topsoil. Any imported topsoil must be of good quality, supplied to meet BS3882:2015 -Specification for topsoil and requirements for use. Remove all debris exceeding 50mm in any dimension brought to the surface including stones, vegetation and rubbish. Plants to be planted at the appropriate depth and gently firmed in. Care must be taken when planting around established and newly planted trees to minimise root disturbance and damage to tree roots. Mixed hedge species must be evenly distributed. Leaky pipe irrigation hoses must be installed along the lengths of all new hedges with connectors fitted suitable for garden hose connection. Plants must be immediately watered after planting. A suitable screened landscape mulch must be applied to a depth of 50mm over ornamental beds, and extending to out either side of new hedge plants to provide a strip 60cm in total width.

**9. POST PLANTING MAINTENANCE**  
Plants to be kept watered during establishment, using the leaky pipe irrigation hoses where these are installed for hedges, and during any prolonged dry weather conditions in the first two years, and for up to three years for trees. Tree stakes to be checked biannually and adjusted or replaced where necessary. Tree stakes to be removed when trees are firmly established, usually within three years. Areas are to be kept weed free and mulch re-applied as necessary to suppress annual weed growth. Plants must be firmed in where they become loose. Any plants which are lost during the first five years following planting to be replaced in the next bare root season.

**GENERAL NOTES:**  
PLANTING TO BE CARRIED OUT FOLLOWING COMPLETION OF CONSTRUCTION DURING SUITABLE WEATHER.

AREAS FOR LAWNS AND WILDFLOWER SEEDING MUST BE MEASURED ON SITE TO CALCULATE THE REQUIRED QUANTITIES OF SEED.

HEDGE LINES MUST BE MEASURED ON SITE TO CALCULATE THE REQUIRED NUMBER OF PLANTS, WITH 5 PLANTS PER LINEAR METRE. THE PLANTS MUST BE PLANTED IN ACCORDANCE WITH THE SPACING SPECIFIED ON THE LANDSCAPE PLAN.