



The Gisburn, Witney

The Gisburn, 112 Centenary Way

Witney OX29 7BB

£459,995

Guide Price



Agent's Comment

"An opportunity not to miss the last remaining Gisburn built by Persimmon Homes"

Enjoying a prime position on the popular Windrush development that sits on the western edge of Witney this fabulous detached house is ready to move into. Beautifully finished to a high specification The Gisburn offers light and airy living space which is second to none.

The sitting room to the front is a superb space for family relaxing and double doors flow through to a simply stunning, contemporary fitted kitchen/dining room with doors to the garden, creating a superb social/entertaining space. Four bedrooms and two modern bathrooms sit on the first floor.

The rear garden is a great space for alfresco dining and affords good privacy. Off-street driveway parking and an integral garage complete this fantastic family home.





Widely Place 21

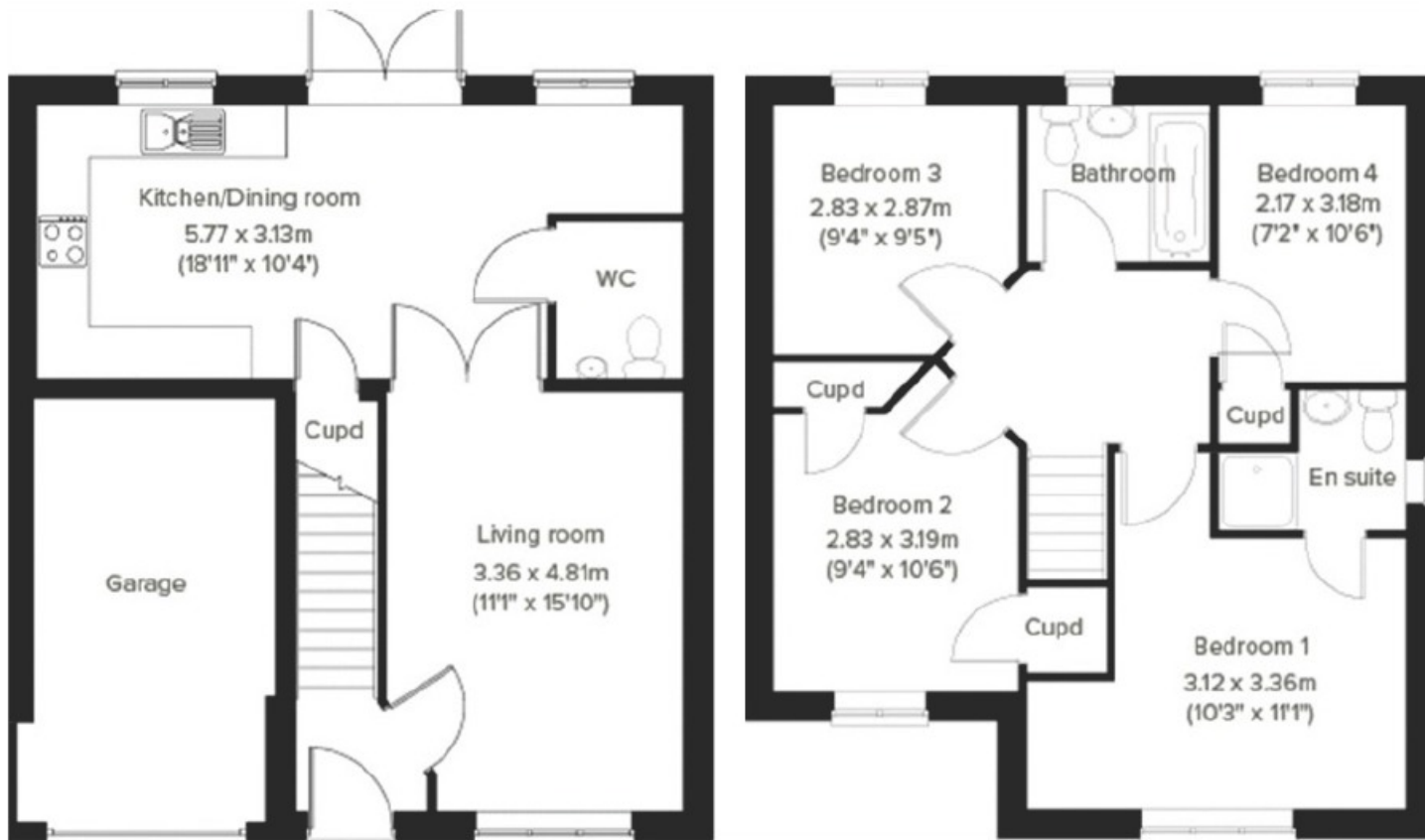
Development layout

Our homes

- 2 bedrooms
- 3 bedrooms
- 4 bedrooms
- 5 bedrooms
- 6 bedrooms
- 7 bedrooms
- 8 bedrooms
- 9 bedrooms
- 10 bedrooms
- 11 bedrooms
- 12 bedrooms
- 13 bedrooms
- 14 bedrooms
- 15 bedrooms
- 16 bedrooms
- 17 bedrooms
- 18 bedrooms
- 19 bedrooms
- 20 bedrooms
- 21 bedrooms
- 22 bedrooms
- 23 bedrooms
- 24 bedrooms
- 25 bedrooms
- 26 bedrooms
- 27 bedrooms
- 28 bedrooms
- 29 bedrooms
- 30 bedrooms
- 31 bedrooms
- 32 bedrooms
- 33 bedrooms
- 34 bedrooms
- 35 bedrooms
- 36 bedrooms
- 37 bedrooms
- 38 bedrooms
- 39 bedrooms
- 40 bedrooms
- 41 bedrooms
- 42 bedrooms
- 43 bedrooms
- 44 bedrooms
- 45 bedrooms
- 46 bedrooms
- 47 bedrooms
- 48 bedrooms
- 49 bedrooms
- 50 bedrooms
- 51 bedrooms
- 52 bedrooms
- 53 bedrooms
- 54 bedrooms
- 55 bedrooms
- 56 bedrooms
- 57 bedrooms
- 58 bedrooms
- 59 bedrooms
- 60 bedrooms
- 61 bedrooms
- 62 bedrooms
- 63 bedrooms
- 64 bedrooms
- 65 bedrooms
- 66 bedrooms
- 67 bedrooms
- 68 bedrooms
- 69 bedrooms
- 70 bedrooms
- 71 bedrooms
- 72 bedrooms
- 73 bedrooms
- 74 bedrooms
- 75 bedrooms
- 76 bedrooms
- 77 bedrooms
- 78 bedrooms
- 79 bedrooms
- 80 bedrooms
- 81 bedrooms
- 82 bedrooms
- 83 bedrooms
- 84 bedrooms
- 85 bedrooms
- 86 bedrooms
- 87 bedrooms
- 88 bedrooms
- 89 bedrooms
- 90 bedrooms
- 91 bedrooms
- 92 bedrooms
- 93 bedrooms
- 94 bedrooms
- 95 bedrooms
- 96 bedrooms
- 97 bedrooms
- 98 bedrooms
- 99 bedrooms
- 100 bedrooms



IMPORTANT NOTICE: These particulars are for information purposes only and do not in whole or in part constitute or form part of any offer or contract, nor should any statement obtained herein be relied upon as a statement or representation of fact. Breckon & Breckon do not test whether the services connected to the property, heating systems and domestic appliances are in working order. We therefore recommend that the purchaser obtains verification from their surveyor or solicitor. Whilst every attempt has been made to ensure the accuracy of the floor plans contained here, measurements of doors, windows and rooms are approximate and no responsibility is taken for any error, omission or misstatement. These plans are for representation purposes only as defined by the RICS code of measuring practice and should be used as such by any possible purchaser.



Breckon & Breckon

est. 1947

Witney

01993 776 775

10 Market Square

Witney, Oxfordshire

OX28 6BB

witney@breckon.co.uk

breckon.co.uk



Oxford city centre

Tel: 01865 244735 (sales)
Tel: 01865 201111 (letting)

Summertown

Tel: 01865 310300 (sales)
Tel: 01865 558999 (apartments)

Headington

Tel: 01865 750200 (sales)
Tel: 01865 763999 (letting)

Abingdon

Tel: 01235 550 550 (sales)
Tel: 01235 554 040 (letting)

Woodstock

Tel: 01993 811881 (sales)
Tel: 01993 810100 (letting)

Witney

Tel: 01993 776775 (sales)
Tel: 01865 201111 (letting)



Council Tax Band:

TBC

Local Authority:

West Oxfordshire District Council

AWAITING
EPC