



72 Battenburg Avenue, Portsmouth

Offers in Region of £400,000

 chinneckshaw



72 Battenburg Avenue

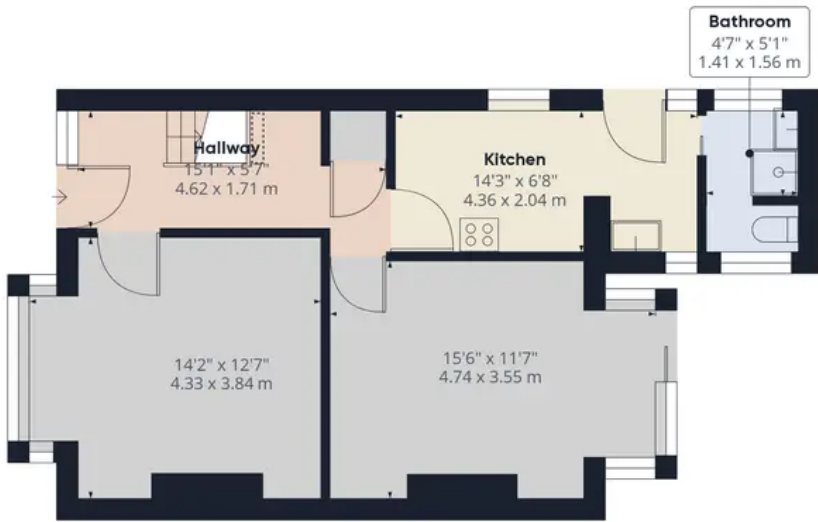
Copnor, Portsmouth

Fantastic opportunity to buy this large extended three bedroom semi detached in this sought after road. Having one of the largest plots we have seen in a good while, the garden is just lovely! Better still you have your own driveway with parking for several vehicles and a large double length garage too! Needing general updating and refurbishment, we think this would make someone a great home. It's located within walking distance of College Park and so close to many local amenities including local shops, schools and parks too. With no forward chain it would make a great family home for those of you looking to move into the area.

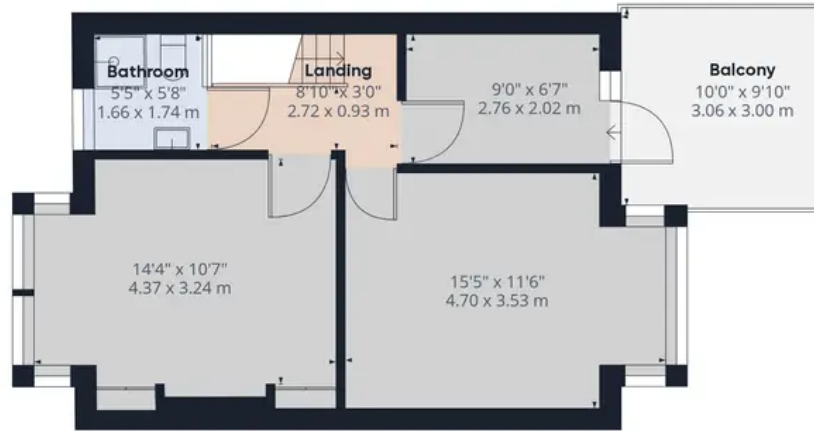
The entrance hall feels light and airy with plenty of storage space and leads to the Lounge. This room has a great feel to it and with it's imposing bay window will easily accommodate modern furniture. Next you'll find the Dining Room which overlooks the garden. It's a great space for entertaining and families alike. The Kitchen has a range of fitted wall and base units and like the rest of the house gives you the chance to update it to your own taste. From here there is a downstairs shower room too. Upstairs you'll find three bedrooms off a large landing. Two good sized double rooms and a further large single room to the rear. The third bedroom has a door with access out onto a balcony which overlooks the garden. The Shower Room has a fitted suite which is quite useable but also gives you the choice of updating to your own design and taste. Outside, this is one of the largest plots we have seen for a while. The south facing garden offers you lots of space and together with the long driveway and large double garage we think you'd be hard pushed to find something better in this price range. All in all we think this could be a wonderful family home and good value compared to others locally. It also has no forward chain so you could be living here sooner than you think!

Council Tax band: C Tenure: Freehold





Ground Floor Building 1



Floor 1 Building 1



Ground Floor Building 2

Approximate total area⁽¹⁾

1519.18 ft²

141.14 m²

Reduced headroom

1.57 ft²

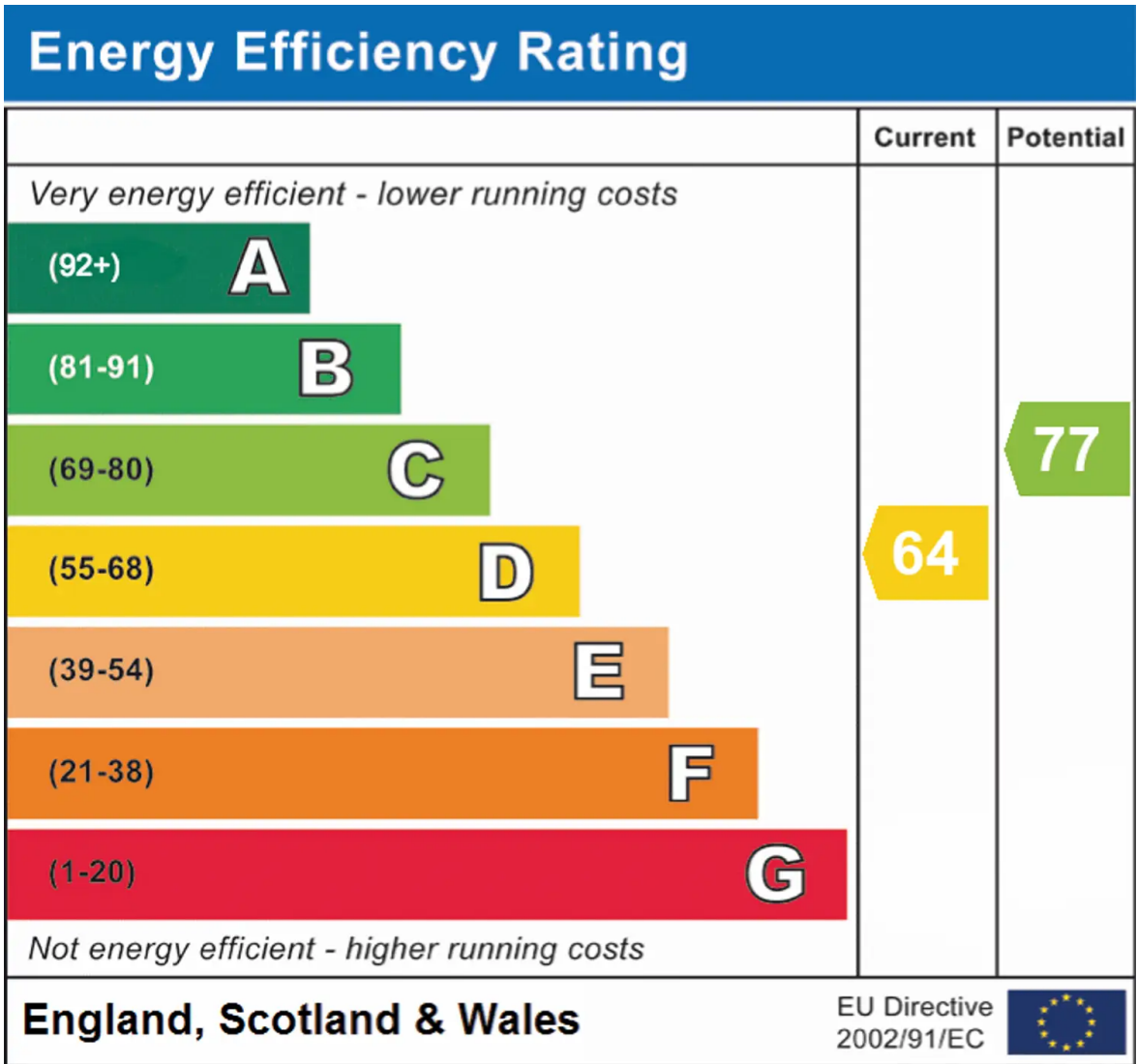
0.15 m²

(1) Excluding balconies and terraces

☒ Reduced headroom
(below 1.5m/4.92ft)

While every attempt has been made to ensure accuracy, all measurements are approximate, not to scale. This floor plan is for illustrative purposes only.

GIRAFFE360



Chinneck Shaw

Bridge House, Milton Road, Portsmouth – PO3 6AN

023 9282 6731

hello@chinneckshaw.co.uk

www.chinneckshaw.co.uk/

Chinneck Shaw, Bridge House, Milton Road, PO3 6AN Consumer Protection from Unfair Trading Regulations 2008: These details are for guidance only and complete accuracy cannot be guaranteed. If there is any point which is of particular importance, verification should be obtained. The do not constitute a contract or part of a contract. All measurements are approximate. No guarantee can be given with regard to planning permissions or fitness for purpose. No apparatus, equipment, fixture or fitting has been tested. Items shown in the photographs are NOT necessarily included. Interested Parties are advised to check availability and make an appointment to view before travelling to see a property.