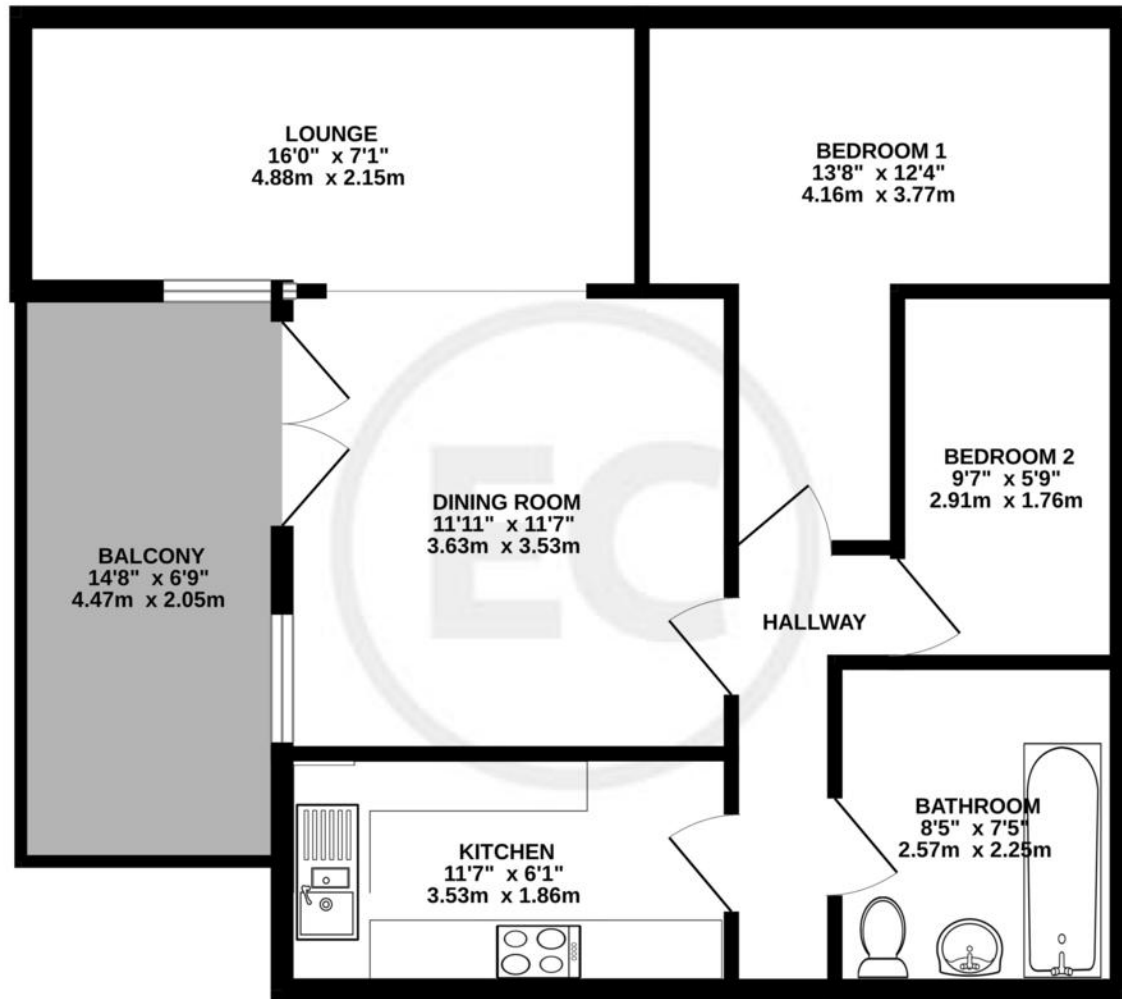


GROUND FLOOR



Whilst every attempt has been made to ensure the accuracy of the floorplan contained here, measurements of doors, windows, rooms and any other items are approximate and no responsibility is taken for any error, omission or mis-statement. This plan is for illustrative purposes only and should be used as such by any prospective purchaser. The services, systems and appliances shown have not been tested and no guarantee as to their operability or efficiency can be given.  
Made with Metropix ©2023

%epcGraph\_c\_1\_500%



**20 Charleston Court, Basildon, SS13 1TA**  
£250,000

Available for viewings is this spacious two bedroom first floor maisonette offered with NO ONWARD CHAIN.

Access is granted via its own front door and comprises of an entrance hall, spacious L-shaped lounge/diner with feature balcony. There is also a fully fitted kitchen, two double bedrooms and bathroom. The property offers double glazing throughout and electric storage heaters. There is also an allocated parking space to the front.



- FIRST FLOOR MAISONETTE APARTMENT
- FULLY FITTED KITCHEN WITH INTEGRATED APPLIANCES
- UPVC DOUBLE GLAZING
- L-SHAPED LOUNGE / DINER
- GOOD SIZE BALCONY
- TWO BEDROOMS
- ALLOCATED PARKING
- NO ONWARD CHAIN
- VIEWING HIGHLY RECOMMENDED



**ENTRANCE HALL** 11' 5" x 2' 8" (3.48m x 0.81m)

Composite solid entrance door with glazed inset leading into entrance hall. Coved to ceiling, dimplex heater, inset spotlights, oak flooring. Doors to: -

**KITCHEN** 10' 8" x 6' 3" (3.25m x 1.91m) UPVC double glazed window to rear. Range of fitted units to both base and eye level. Granite worktops incorporating a single stainless steel sink unit. Integrated appliances include slimline dishwasher, washing machine, fridge, freezer. NEFF ceramic hob with stainless steel extractor canopy. Bosch electric oven, inset spotlights, oak flooring, power points.

**LOUNGE** 16' 6" x 11' 2" > 15'9 (5.03m x 3.4m) L shaped room with double doors leading onto a balcony with adjacent UPVC double window to rear, double glazed window to side aspect, dimplex wall mounted heater, oak flooring, power points, TV point.

**BALCONY** 9' x 6' 8" (2.74m x 2.03m) Tiled flooring. Outside power point.

**BEDROOM ONE** 12' 9" > 8'8 x 11' 6" (3.89m x 3.51m) Double glazed window to front and side. Oak flooring, power points, dimplex wall mounted heater, two set of fitted wardrobes with sliding doors.

**BEDROOM TWO** 8' 9" x 6' 3" (2.67m x 1.91m) Double glazed window to front, power points, coved to ceiling, oak flooring, dimplex wall mounted heater.

**BATHROOM** Obscure double window to front. White suite comprising of panelled bath with separate shower and shower screen. Vanity sink unit with sliding drawer under, low level WC, fully tiled walls, extractor fan, inset spotlights.