

# Compton

**London**  
3-5 Fashion Street  
E1 6PX

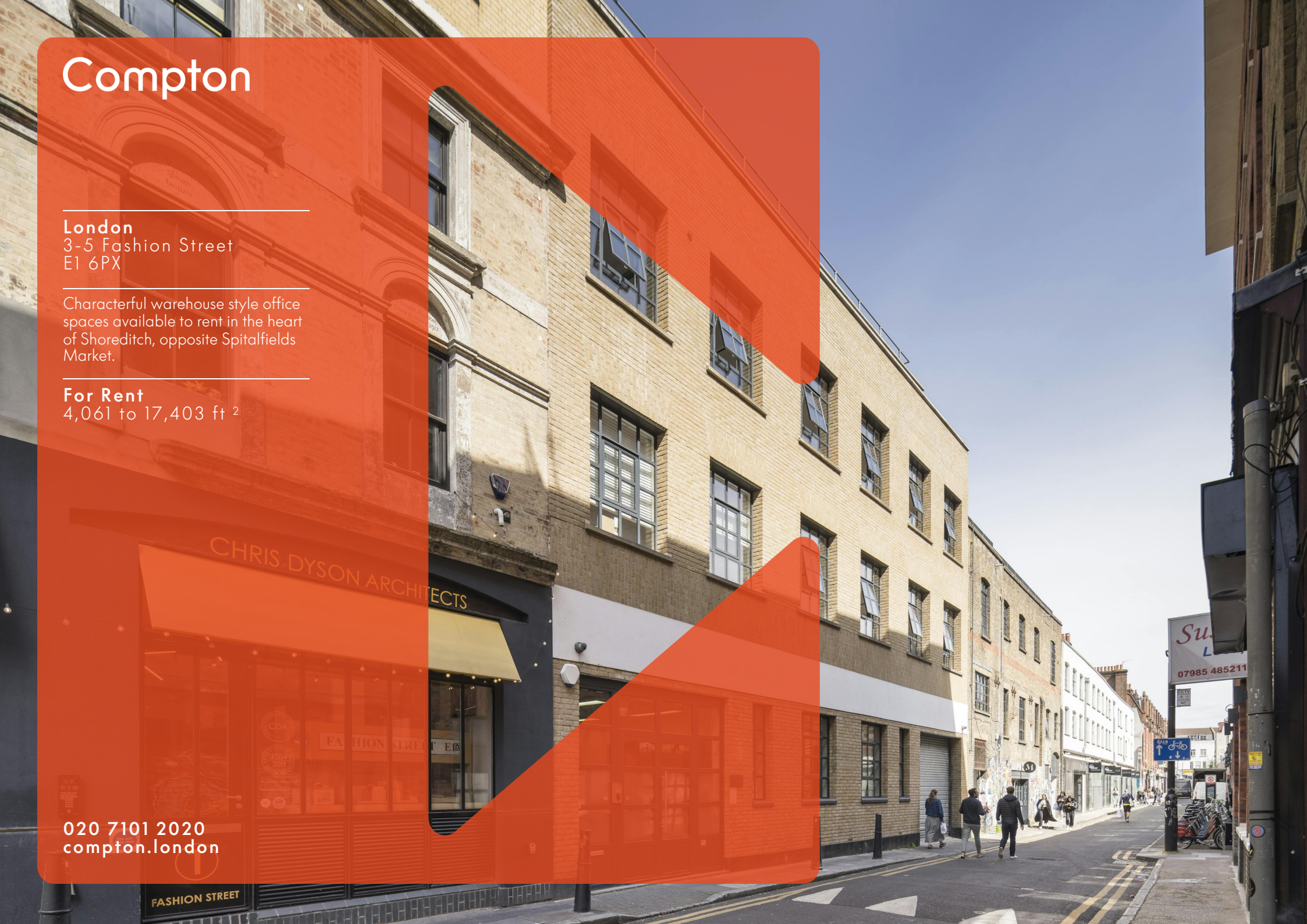
Characterful warehouse style office spaces available to rent in the heart of Shoreditch, opposite Spitalfields Market.

**For Rent**  
4,061 to 17,403 ft<sup>2</sup>

020 7101 2020  
[compton.london](http://compton.london)

CHRIS DYSON ARCHITECTS

FASHION STREET



# Compton

---

## London

3-5 Fashion Street  
E1 6PX

---

Characterful warehouse style office spaces available to rent in the heart of Shoreditch, opposite Spitalfields Market.

---

## For Rent

4,061 to 17,403 ft<sup>2</sup>



## Location

The property is located off Brick Lane, in the heart of Spitalfields, overlooking the Hawksmoor Church and ground. You can find a variety of popular attractions such as Spitalfields Market.

The public transport connectivity is excellent as it lies within a short walk from a number of stations including Shoreditch High Street, Aldgate, Whitechapel and Liverpool Street which is the properties main line and providing access to the London Underground & Elizabeth line.

# Compton

---

## London

3-5 Fashion Street  
E1 6PX

---

Characterful warehouse style office spaces available to rent in the heart of Shoreditch, opposite Spitalfields Market.

---

## For Rent

4,061 to 17,403 ft<sup>2</sup>



# Compton

---

## London

3-5 Fashion Street  
E1 6PX

---

Characterful warehouse style office spaces available to rent in the heart of Shoreditch, opposite Spitalfields Market.

---

## For Rent

4,061 to 17,403 ft<sup>2</sup>



Kitchenette - ground floor

# Compton

---

## London

3-5 Fashion Street  
E1 6PX

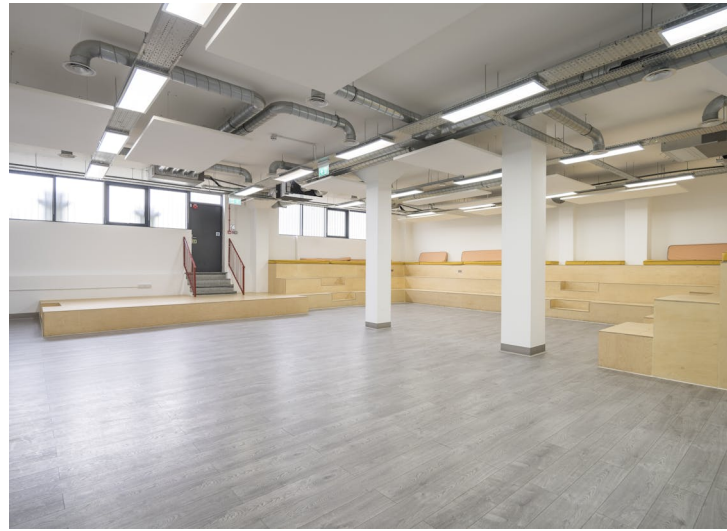
---

Characterful warehouse style office spaces available to rent in the heart of Shoreditch, opposite Spitalfields Market.

---

## For Rent

4,061 to 17,403 ft<sup>2</sup>



# Compton

---

## London

3-5 Fashion Street  
E1 6PX

---

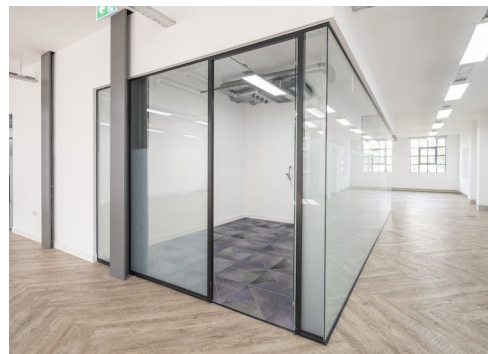
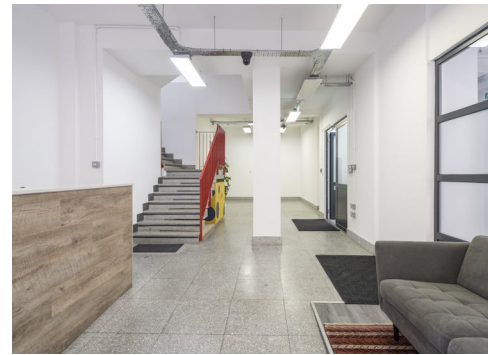
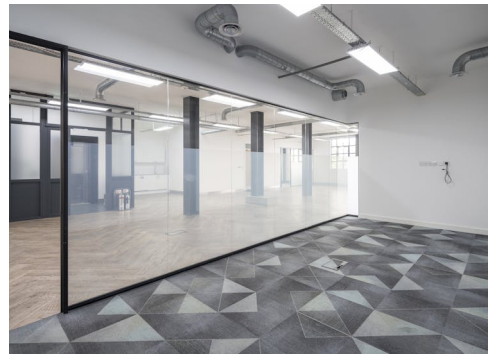
Characterful warehouse style office spaces available to rent in the heart of Shoreditch, opposite Spitalfields Market.

---

## For Rent

4,061 to 17,403 ft<sup>2</sup>

---



# Compton

---

## London

3-5 Fashion Street  
E1 6PX

---

Characterful warehouse style office spaces available to rent in the heart of Shoreditch, opposite Spitalfields Market.

---

## For Rent

4,061 to 17,403 ft<sup>2</sup>

---

## Amenities

- HQ opportunity
- Partial fit out in place with kitchenette & meeting rooms
- London stock brick facade
- Modern suspending linear lighting
- Great ceiling height throughout each floor
- WC's on each floor including 1 x shower
- Private terraces
- Bike store
- Passenger lift
- Air conditioning

---

## Description

Located in the vibrant district of Spitalfields in London, this characterful warehouse stands as a beacon of modernity amidst historic surrounds. It's sleek facade of glass and brickwork seamlessly integrates with the neighbourhoods eclectic charm.

# Compton

---

## London

3-5 Fashion Street  
E1 6PX

---

Characterful warehouse style office spaces available to rent in the heart of Shoreditch, opposite Spitalfields Market.

---

## For Rent

4,061 to 17,403 ft<sup>2</sup>

---

## Content

[View on Website](#)





# Compton

---

## London

3-5 Fashion Street  
E1 6PX

---

Characterful warehouse style office spaces available to rent in the heart of Shoreditch, opposite Spitalfields Market.

---

## For Rent

4,061 to 17,403 ft<sup>2</sup>

---

## Floor Areas & Outgoings

---

The accommodation comprises the following areas:

Name	sq ft	Rent (sq ft)	Rates Payable (sq ft)	Service Charge (sq ft)	Total year	Availability
3rd	4,388	£47.50	£16.35	On Application	£280,173.80	Available
2nd	4,575	£47.50	On Application	On Application	£217,312.50	Available
1st	4,379	£47.50	£16.35	On Application	£279,599.15	Available
Ground	4,061	£45	£16.35	On Application	£249,142.35	Available
Total	17,403	£46.88	£16.35		£1,026,227.80	

# Compton

---

## Contact Us

All appointments to view must be arranged via sole agents, Compton, through —

Emma Higgins  
[eh@compton.london](mailto:eh@compton.london)  
07769 605 295

Shaun Simons  
[ss@compton.london](mailto:ss@compton.london)  
07788 423131

Samantha-Jo Roberts  
[sr@compton.london](mailto:sr@compton.london)  
07704343032

Dimitri Melaisi (Gryphon  
Property Partners)

Colin Hargreaves (Gryphon  
Property Partners)  
0203 440 9804

Andrew McCallum (Gryphon  
Property Partners)



020 7101 2020  
[compton.london](http://compton.london)

Compton gives notice that these particulars are set out as a general outline only for the guidance of intending Purchasers or Lessees and do not constitute any part of an offer or contract. Details are given without any responsibility and any intending Purchasers, Lessees or Third Party should not rely on them as statements or representations of fact, but must satisfy themselves by inspection or otherwise as to the correctness of each of them. No person employed or engaged by Compton has any authority to make any representation or warranty whatsoever in relation to this property. Compton is the licensed trading name of Compton RE Disposals Limited. Company registered in England & Wales no. Registered office: 47 St John's Square, Clerkenwell, London, EC1V 4JJ  
Generated on 25/04/2024