

Sanders & Sanders

ESTATE AGENTS

WATERLOO ROAD BIDFORD-ON-AVON ALCESTER



A rare opportunity to acquire a period, and rather elegant, semi-detached linked property boasting flagstone flooring, a sizeable garden room and generous garden with two useful outhouses.

Benefiting from driveway parking and being offered with no upward chain. The accommodation comprises: Entrance porch, lounge, dining room, kitchen, garden room with cloakroom, two bedrooms, generously sized bathroom, and rear garden.

£265,000

Burton House, High Street, Alcester, Warwickshire, B49 5AB.
Tel: 01789 766771 E-mail: alcester@sanders-sanders.co.uk

Web: www.sanders-sanders.co.uk

Waterloo Road, Bidford-on-Avon, Alcester, Warwickshire, B50 4JH

Lounge

13'10" x 10'9" (4.21 x 3.27)



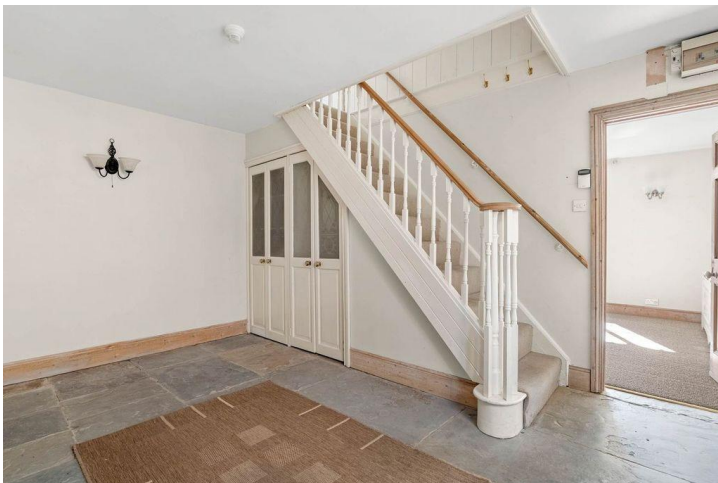
Garden Room

14'10" x 12'7" (4.52 x 3.83)



Dining Room

13'11" x 11'1" (4.23 x 3.39)



Bedroom One

13'10" x 10'10" (4.22 x 3.29)



Kitchen

10'9" x 10'9" (3.28 x 3.27)



Bedroom Two

10'10" x 10'9" (3.30 x 3.27)



Generously Sized Bathroom



Rear Garden



External Roof of Outhouse



Internal of Additional Outhouse

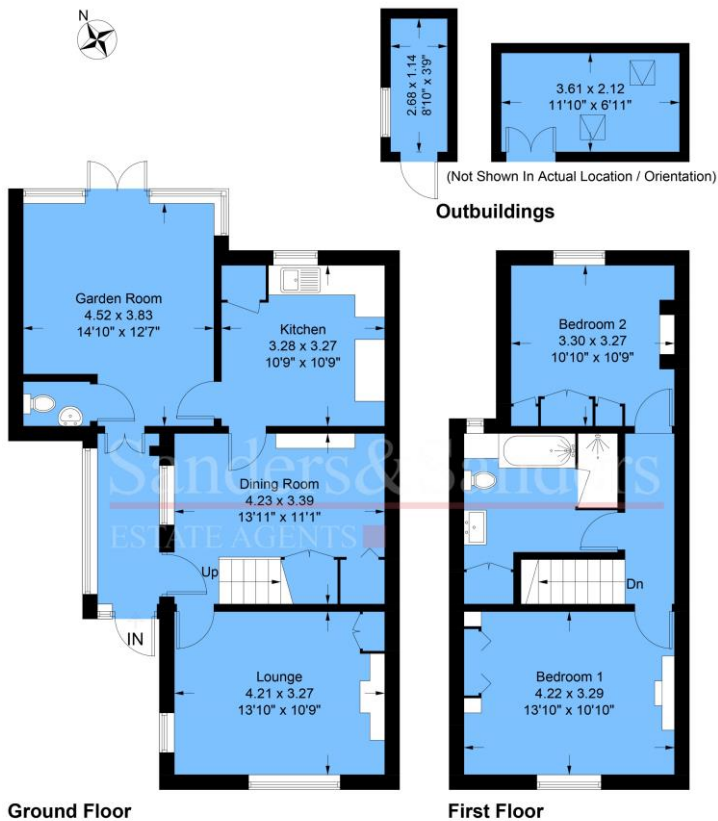


Fixtures & Fittings

Please note that the fixtures & fittings shown on the photographs, contained within these property details, do not form part of a fixtures & fittings list. Some items may/may not be included. You are advised to clarify what items are included before entering into any negotiations.

Floor Plans & Property Details Disclaimer

These floor plans are for identification purposes only in relation to where one room is situated to another. They are not to be relied upon in any way for dimensions, scaling or sq. ft/metres. We will not be held responsible for any loss incurred, due to reliance on these measurements from the floor plans or measurements from the property details. You are advised to confirm all measurements.



Approximate Gross Internal Area = 104.9 sq m / 1129 sq ft
 Outbuildings = 10.3 sq m / 111 sq ft
 Total = 115.2 sq m / 1240 sq ft
 Illustration for identification purposes only,
 measurements are approximate, not to scale.