



Flat 30, Capitol Square 4-6 Church Street, Epsom
Epsom

Guide Price **£340,000**



Flat 30

Capitol Square 4-6 Church Street,
Epsom

Modern 2-bed apartment in central Epsom, ideal for investment. Open-plan living, modern kitchen, 2 bedrooms, 2 baths. Allocated underground carpark. Close to amenities and transport links. Perfect for investors or ready-to-move-in buyers.

Council Tax band: D

Tenure: Leasehold

EPC Energy Efficiency Rating: C

EPC Environmental Impact Rating: C

- Two Bed Two Bath Flat
- Third Floor
- Combined Living / Dining
- Light & Airy
- Modern Equipped Kitchen
- Allocated Underground Carpark
- Perfect Investment Property
- In Superb Order, Just Move In
- Central Epsom Location

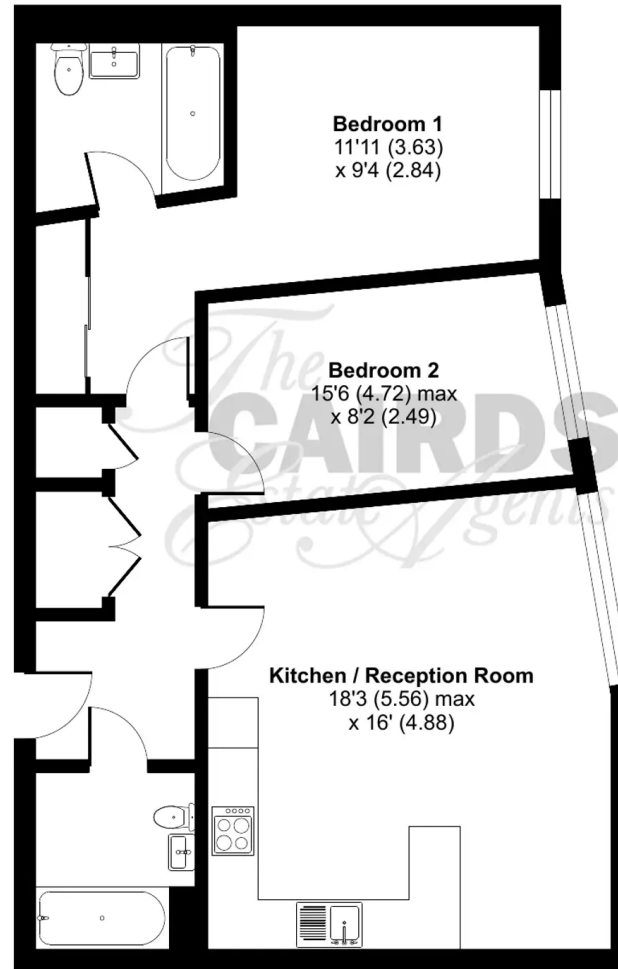




Church Street, Epsom, KT17

Approximate Area = 792 sq ft / 73.5 sq

For identification only - Not to scale



THIRD FLOOR



Floor plan produced in accordance with RICS Property Measurement Standards incorporating International Property Measurement Standards (IPMS2 Residential). © nlchecon 2024. Produced for Cairds - REF: 1112181





Cairds The Estate Agents

Cairds The Estate Agents, 128-130 High Street - KT19 8BT

01372 743033 • homes@cairds.co.uk • www.cairds.co.uk