



Flat 14, Hawthorn Court Herent Drive, Ilford
Ilford

Prices From **£320,000**



Flat 14

Hawthorn Court Herent Drive, Ilford

Fantastic ground floor, two bedroom, two bathroom apartment, benefiting from direct access to garden and private parking. Located in Clayhall IG5

Council Tax band: C

Tenure: Leasehold

- Two Bedrooms
- Two Bathrooms (one en-suite)
- Ground Floor with Secure Entry
- Modern Fitted Kitchen
- Good Decorative Order Throughout
- Direct Access to Gardens
- Gas Central Heating
- Private Parking Space
- Central Underground Station within 1.3 Miles
- Several High Achieving Schools within 1 Mile





Reception

Through living room reception with living and dining area.

Front Photo

Front photo of the block with parking.

Kitchen

Modern fitted kitchen.

Master Bedroom

Master bedroom with ensuite shower room

Family Bathroom

Modern family bathroom with bath & over head shower, basin with draws and towel radiator.

Un-Suite Shower Room

Modern fitted shower room with large shower, sink with draws, WC and towel radiator.

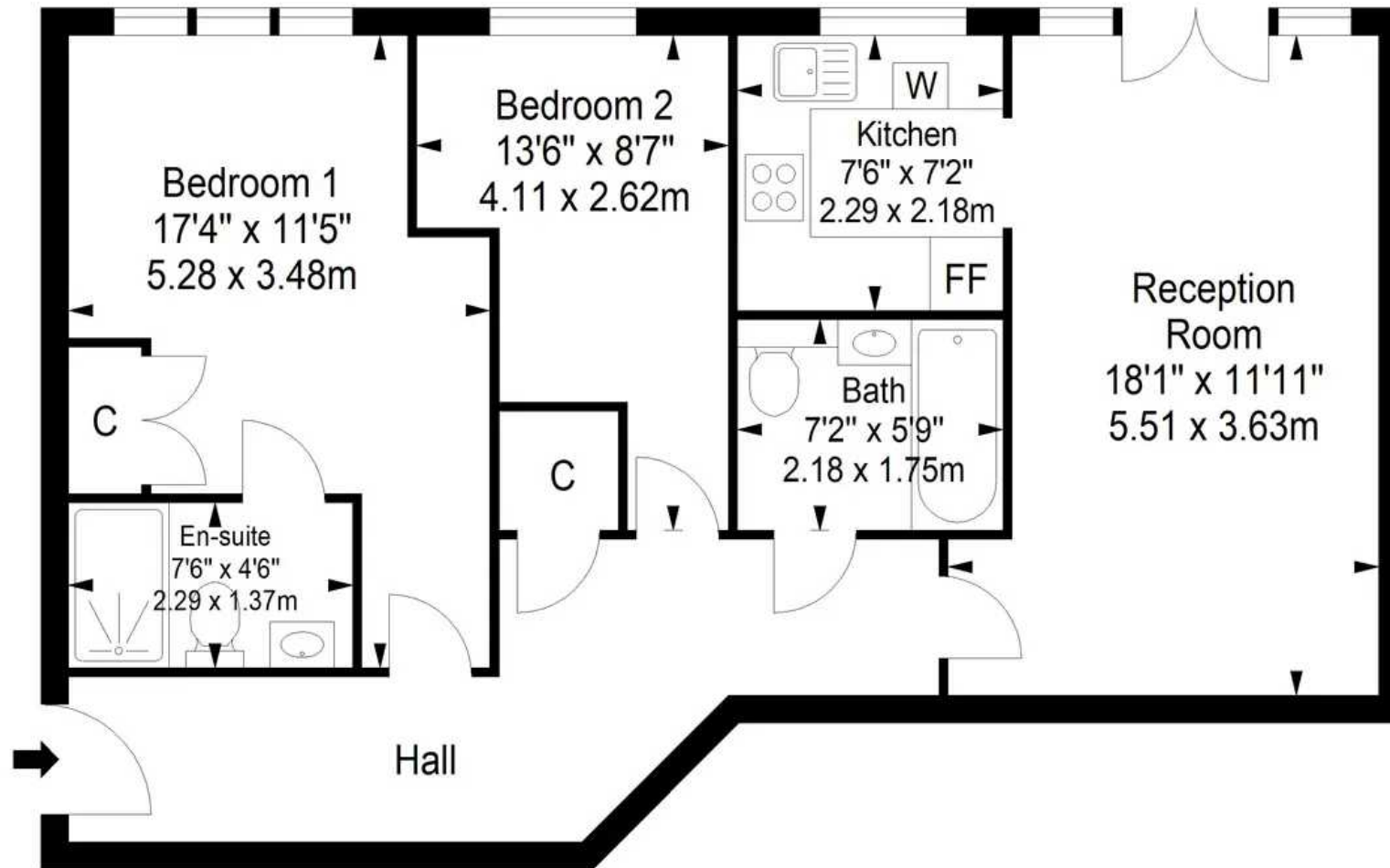
Second Bedroom

Second bedroom with bunk beds.





Ground Floor



Approximate gross internal floor area 65.7 sq m/ 707.2 sq ft

Whilst every care has been taken to ensure accuracy, dimensions are approximate and for illustrative purposes only.

All rights reserved.



Youngs Residential

2-16 Lionel Road, Canvey Island - SS8 9DE

020 8226 0071 • richard.harman@youngsresidential.com • youngsresidential.com/