

THE SANDALWOOD EDGEFIELD GREEN



3 | 

2 | 

1 | 

SEMI-DETACHED
AND TERRACE
OPTIONS
AVAILABLE



Artist's impression

Artist's impression

KEY FEATURES

- Set over three storeys
- Two double bedrooms
- One single bedroom
- Downstairs W.C.
- Open plan living/dining area
- Two family bathrooms
- Patio doors to rear garden
- Driveway parking



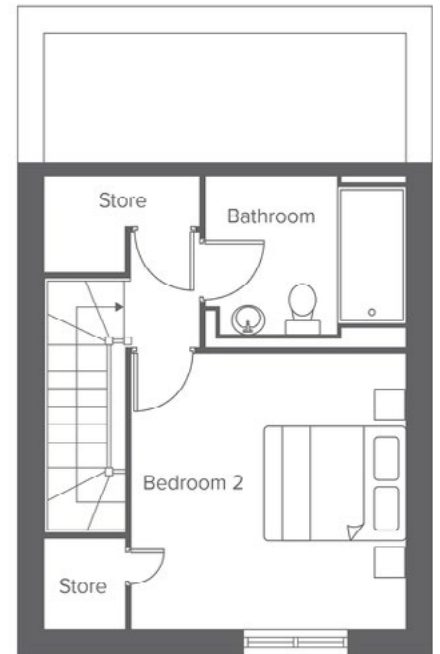
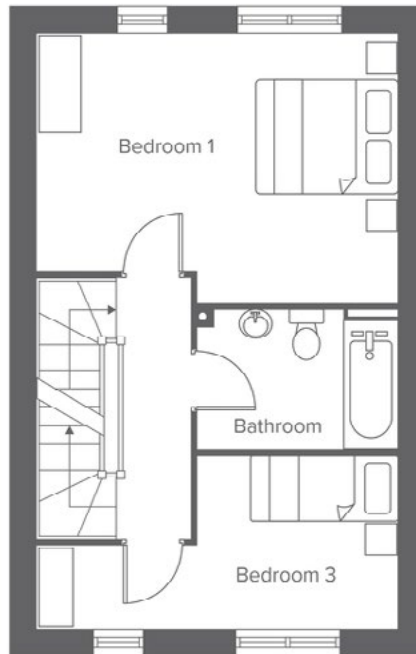
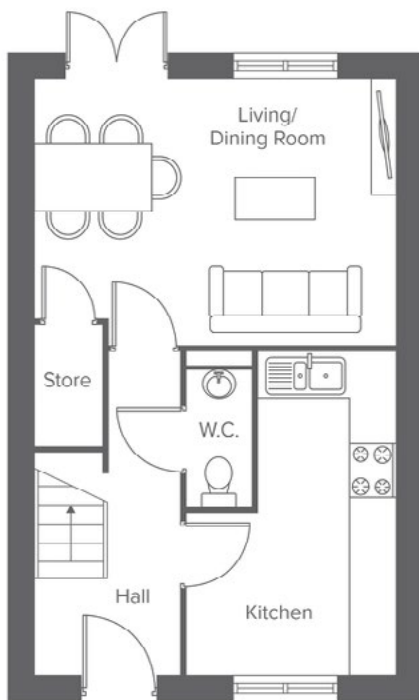
The Sandalwood
Shared Ownership plots
82-83, 163, 167, 170,
175, 177-178, 180,
197-198, 203-204

EDGE LANE, OPENSHAW, MANCHESTER, M11 1DA
A range of stylish 2, 3 & 4-bedroom houses and 1 & 2-bedroom apartments

Rent to Buy plots
86-87, 161-162,
168-169, 176, 179

THE SANDALWOOD EDGEFIELD GREEN

3-bedroom home, sleeps 5




Total size: 102.8 sqm, 1,106 sqft


Ground Floor	Metric	Imperial
Kitchen	4.2 x 2.7	13'9" x 8'10"
Living/Dining	3.5 x 4.7	11'5" x 15'5"
W.C.	2.0 x 0.8	6'6" x 2'7"


First Floor	Metric	Imperial
Bedroom 1	3.5 x 4.7	11'5" x 15'5"
Bedroom 3	2.3 x 4.7	7'6" x 15'5"
Bathroom	1.8 x 2.6	5'10" x 8'6"


Second Floor	Metric	Imperial
Bedroom 2	3.6 x 3.6	11'9" x 11'9"
Bathroom	2.2 x 2.6	7'2" x 8'6"


CONTACT OUR TEAM

 0161 516 3779

 yourhousinggroup.co.uk

 @yourhousinggroup

 @Your_Housing

 @yourhousing