



4 Batts Hill, Redhill

Guide Price £900,000



4 Batts Hill

Nestled in a desirable residential area, this beautiful four-bedroom detached family home offers a perfect blend of style and functionality. The ground floor welcomes you with a lovely fitted kitchen featuring an island unit, perfect for family gatherings and entertaining. Two large reception rooms provide ample space for relaxation, while a convenient ground floor shower room/wc adds practicality. Ascend to the first floor to find a versatile office space, four bedrooms and the family bathroom. The property also boasts an integral garage and off-road parking for your convenience. The large rear garden offers a peaceful retreat with stunning views, creating a serene outdoor oasis that is perfect for enjoying summer evenings with family and friends. This property is ideally positioned for excellent schools, making it an ideal choice for families seeking quality education options for their children. Additionally, Redhill train station and town centre are just a stone's throw away, providing easy access to transportation and amenities, making this home the perfect choice for those seeking modern comfort and convenience in a prime location.

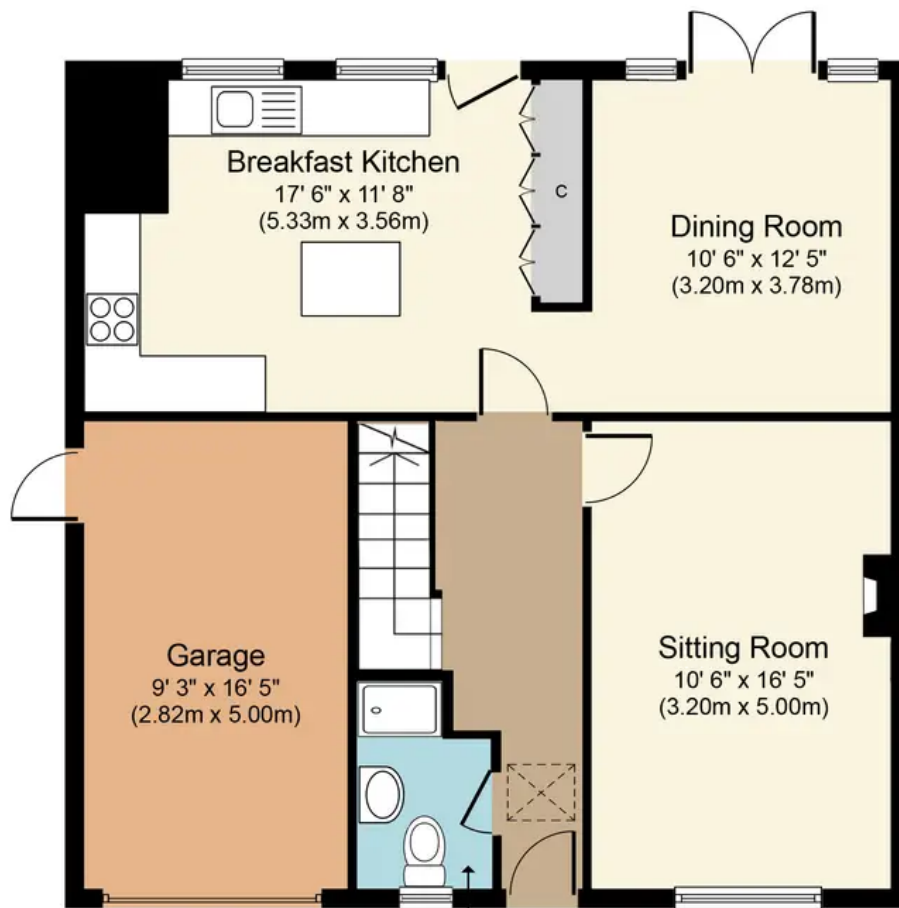
Step outside to discover a large rear garden that beckons you to enjoy the great outdoors. This expansive space offers endless possibilities for recreation and relaxation, whether it's gardening, outdoor dining, or simply unwinding amidst the tranquil surroundings. The panoramic views add a touch of serenity to the outdoor space, creating a picturesque backdrop for your daily activities. Surrounded by lush greenery, the large rear garden provides a private sanctuary where you can escape the hustle and bustle of every-day life. Whether you're hosting a barbeque or simply soaking up the sun, this outdoor haven is sure to become your favourite spot for leisure and entertainment.

Council Tax band: E Tenure: Freehold

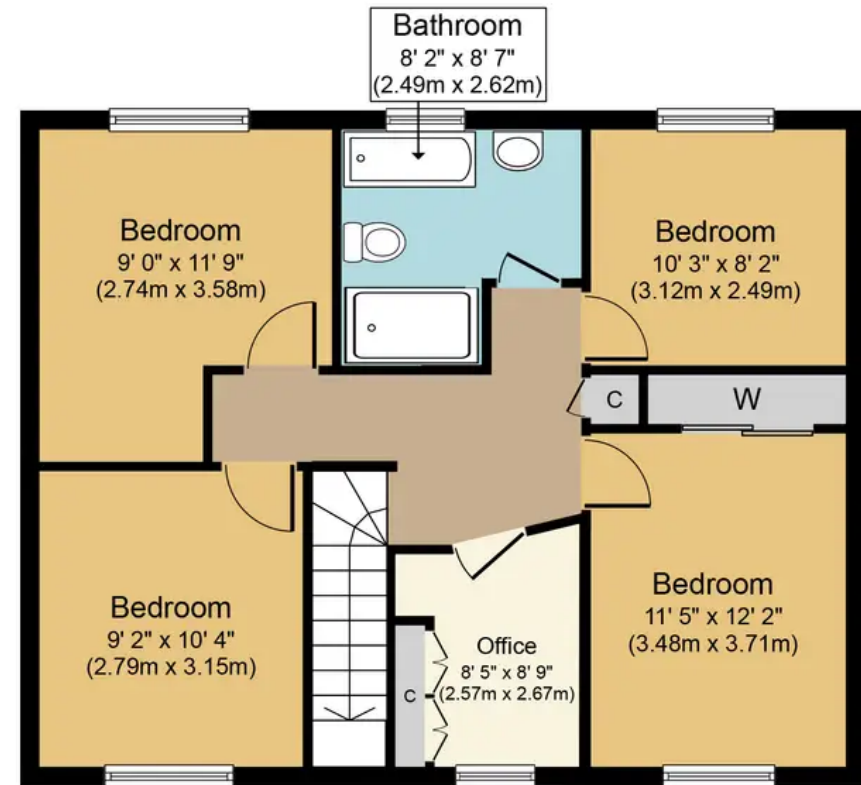
- Beautiful Four Bedroom Detached Family Home
- Lovely Fitted Kitchen With Island Unit







Ground Floor
 Approximate Floor Area
 805 sq. ft.
 (74.8 sq. m.)



First Floor
 Approximate Floor Area
 634 sq. ft.
 (58.9 sq. m.)



Batts Hill, RH1
Approx. Gross Internal Floor Area 1,439 sq.ft. (133.7 sq.m.)



Whilst every attempt has been made to ensure the accuracy of the floor plan contained here, measurements of doors, windows, rooms and any other items are approximate and no responsibility is taken for any error, omission, or mis-statement. The measurements should not be relied upon for valuation, transaction and/or funding purposes. This plan is for illustrative purposes only and should be used as such by any prospective purchaser or tenant. The services, systems and appliances shown have not been tested and no guarantee as to their operability or efficiency can be given.