



39a Town Centre, Hatfield

£1,150 pcm

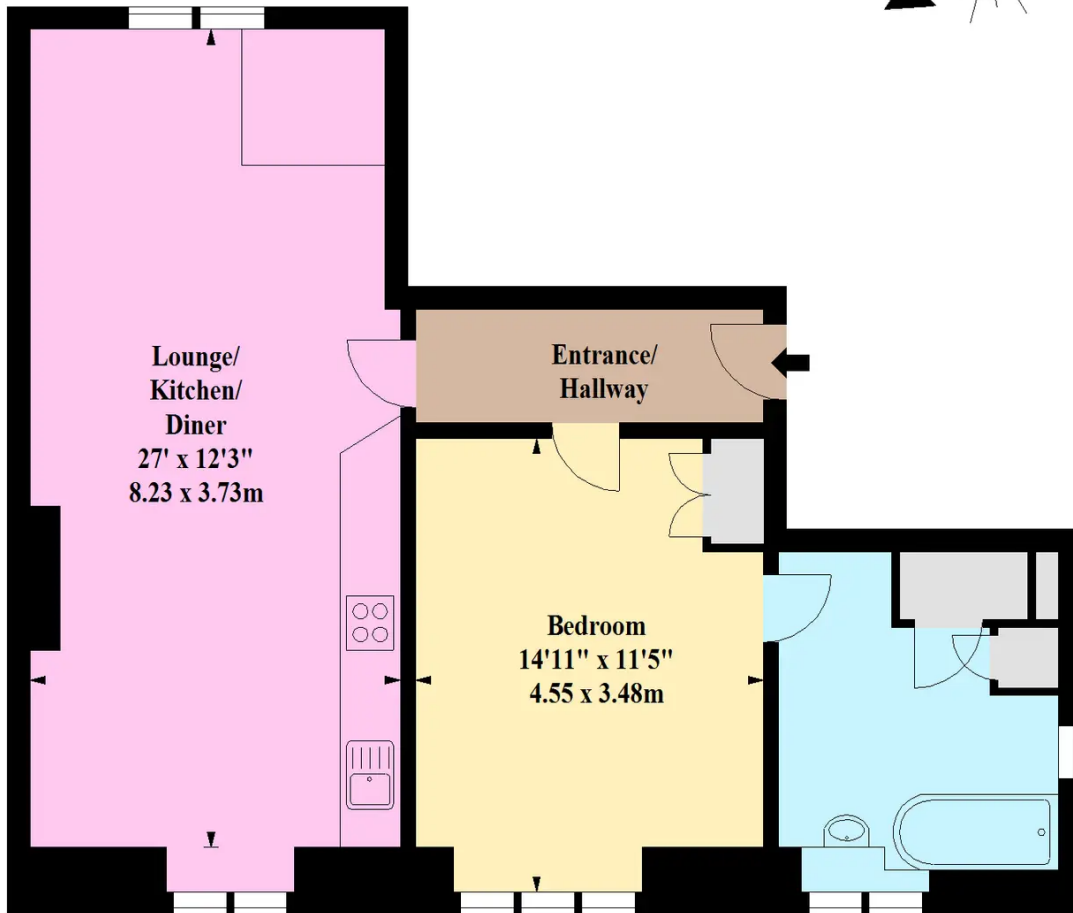
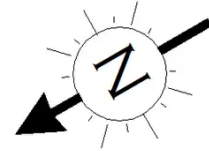
FIRST FLOOR APARTMENT • ONE DOUBLE BEDROOM • OPEN PLAN LIVING ROOM • MODERN KITCHEN • LARGE BATHROOM • CLOSE TO TRANSPORT ROUTES • PART FURNISHED • AVAILABLE JUNE • EPC RATING - D

KINGS

Sales Lettings Management

**Town Centre,
Hatfield,
AL10**

**Approx. Gross Internal Area *
660 Ft² - 61.31 M²**



First Floor

Whilst every attempt has been made to ensure the accuracy of the floor plan contained here, measurements of doors, windows, rooms and any other items are approximate and no responsibility is taken for any error, omission or mis-statement. This plan is for illustrative purposes only and should be used as such by any prospective purchaser. The services, systems and appliances shown have not been tested and no guarantee as to their operability or efficiency can be given

You can include any text here. The text can be modified upon generating your brochure.

