



Green Acre Exted, Elham - CT4 6YG

Guide Price £1,250,000

Approximate Gross Internal Area (Including Low Ceiling) = 343 sq m / 3693 sq ft
Garage and Car Port = 63 sq m / 681 sq ft

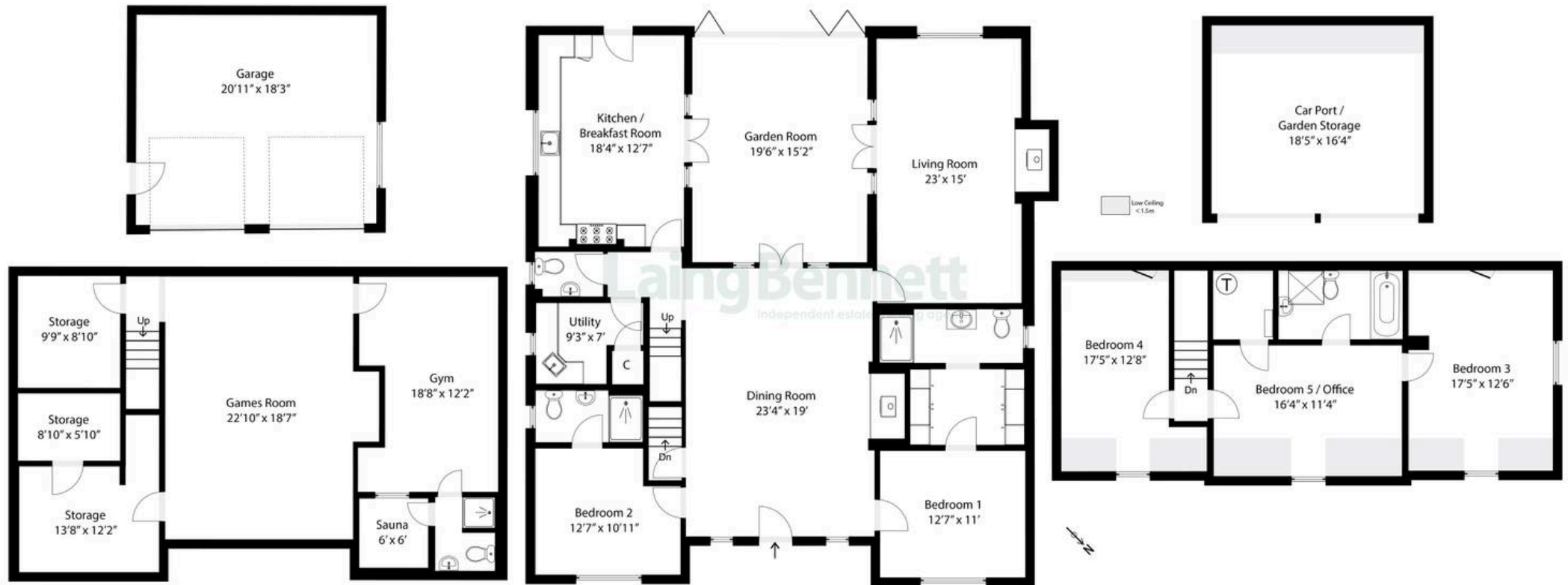


Illustration for identification purposes only. Measurements are approximate. Dimensions given are between the widest points.
Not to scale. Outbuildings are not shown in actual location.



Green Acre Exted

Elham, Canterbury

A substantial four/five bedroom family home with land totalling approximately 6.36. Acres. If you are looking to immerse yourself in the natural beauty of the countryside then look no further. This peaceful and quiet location offers a welcome retreat from the hustle and bustle of city life, allowing you to unwind and enjoy a slower pace of living.

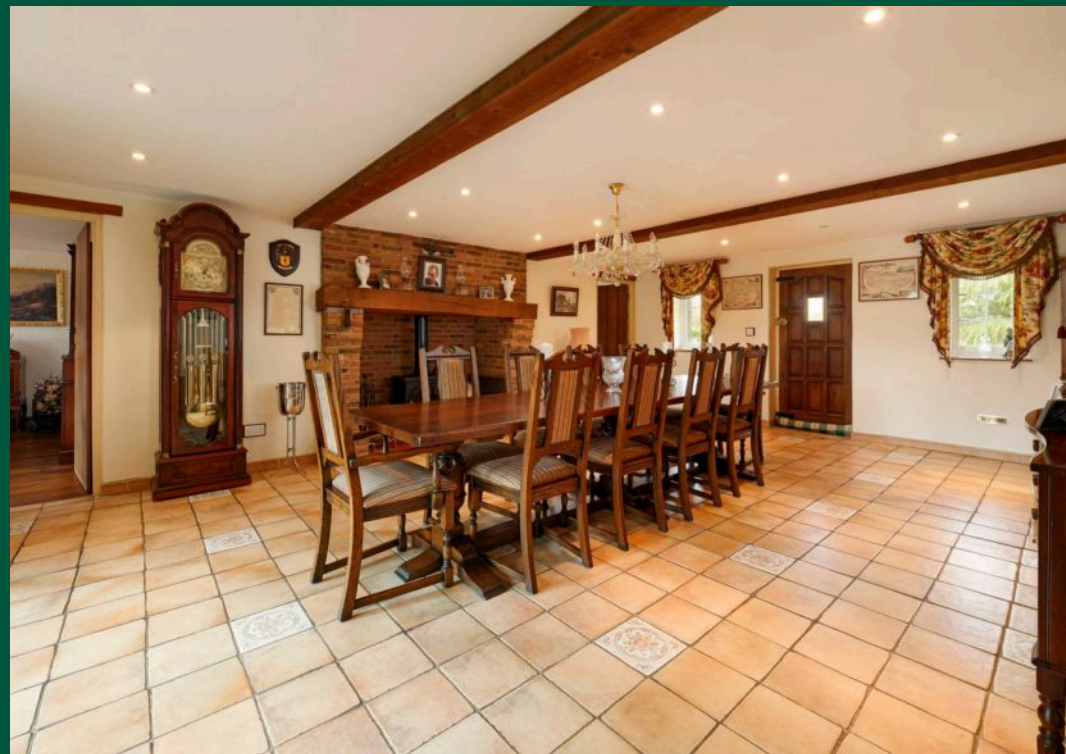
Council Tax band: E

Tenure: Freehold

EPC Energy Efficiency Rating: C

EPC Environmental Impact Rating: C











**Laing
Bennett**
Independent estate & letting agents

Laing Bennett

Laing Bennett Ltd, The Estate Office, 8 Station Road – CT18 8HP

01303 863393 • info@laingbennett.co.uk • www.laingbennett.co.uk/

DISCLAIMER – These details are for guidance only and do not form part of an offer or contract. Measurements are approximate. Laing Bennett Ltd and the Vendor/Landlord accept no liability. Services and appliances are untested. Applicants must make their own checks. Items shown may not be included. No staff have authority to give warranties.