



Stokes Lane, The Barbican, Plymouth, PL1 2LW

£120,000 LEASEHOLD





Stokes Lane

The Barbican, Plymouth

Located in the heart of the Barbican, close to Plymouth City Centre & Hoe, this beautifully presented, third floor apartment has open plan living, secure gated parking & no onward chain.

Council Tax band: A

Tenure: Leasehold

- Purpose Built Top Floor Apartment
- Three Piece Modern Bathroom & Modern Kitchen
- Lift Access
- Secure Gated Allocated Parking Space
- Waterside Location
- Excellent First Time or Investment Purchase



Stokes Lane

The Barbican, Plymouth

The apartment is situated on the third floor of this purpose built block in the centre of the Barbican area of the city. From the communal hallway there are stairs and lift access to the third floor.

Located on the the third floor, you enter the property into the hallway. The hallway has a large storage cupboard, with doors leading into the open plan living space, bedroom and bathroom. The hallway is well presented.

The open plan living space has a fitted kitchen at the rear of the room, with an integral oven and electric hob, plus further space for a range of appliances. The room has a large window to the front elevation which catches the afternoon sun. The lounge area has space for an array of large furniture and is very well presented.

The main bedroom has space for a range of large furniture, plus a window to the front elevation, which catches the afternoon sun. The bathroom has a panelled bath with a shower overhead, a low level w/c, hand wash basin and tiled splash backs to finish.





Outside

Externally, there is an allocated parking space with is located in the secure gated car park. The parking space is numbered and covered.

Tenure & Services

Tenure - Leasehold

Lease Length - 97 Years

Service Charge & Ground Rent - £2523 & £25 Per Annum

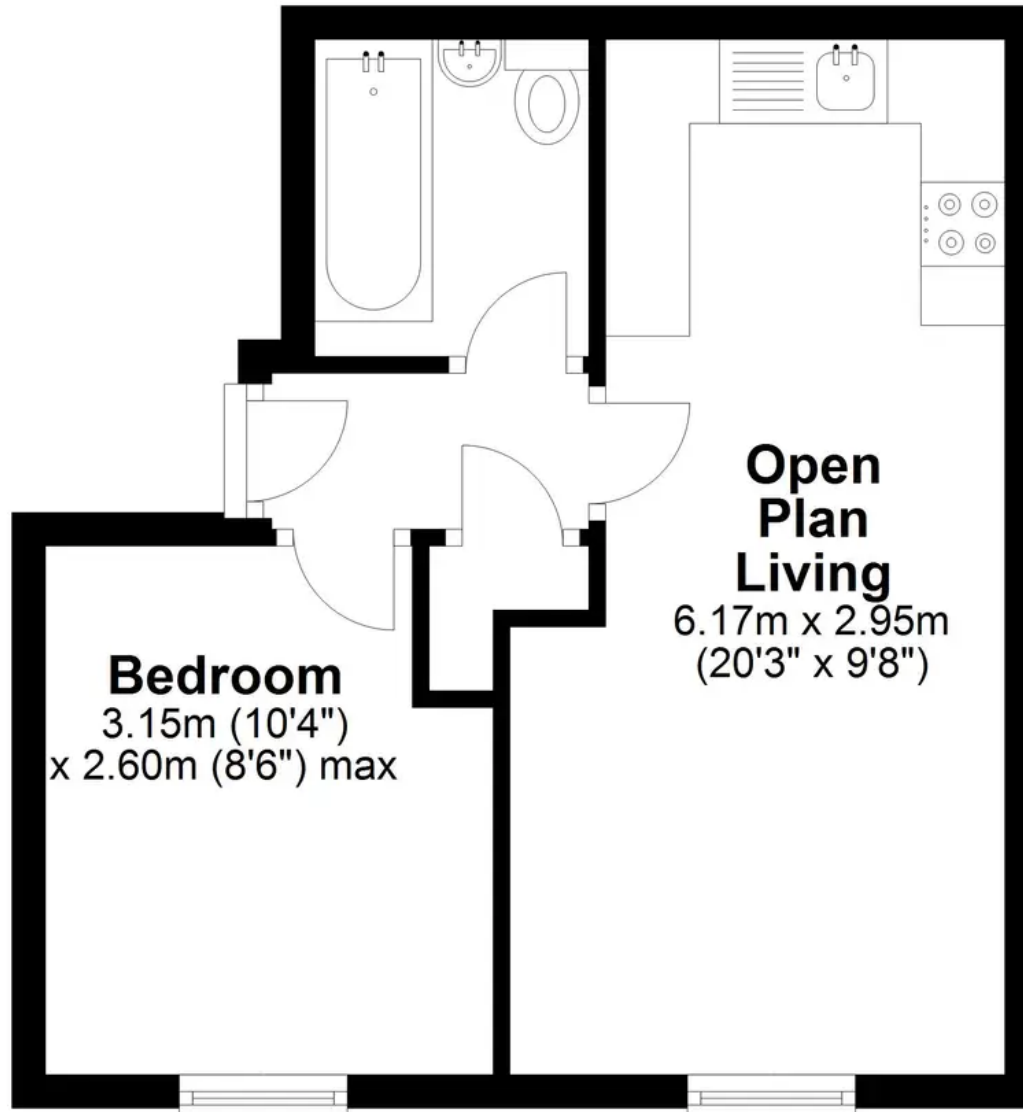
EPC - C

Council Tax Band - A



Third Floor

Approx. 30.5 sq. metres (327.8 sq. feet)



Total area: approx. 30.5 sq. metres (327.8 sq. feet)

Stokes Lane, The Barbican, Plymouth



Atwell Martin

Atwell Martin, 65 Southside Street - PL1 2LA

01752 202121

plymouthsales@atwell-martin.co.uk

plymouth.atwellmartin.co.uk/

Atwell Martin Plymouth endeavour to ensure the accuracy of property details produced and displayed. Please note that we have not tested any apparatus, equipment, fixtures, fittings or services and so cannot verify that they are connected, in working order or fit for purpose. It is imperative that the buyer of any property makes such checks, prior to purchase so as to satisfy themselves of the properties suitability for their purchase. .