



16 West Hatch Manor, Ruislip

Ruislip

£850,000



LAWRENCE RAND

16 West Hatch Manor

Ruislip, Ruislip

An impressive detached bungalow set within this large plot with significant potential to enlarge and improve with a South facing aspect . The property is situated close to both Ruislip and Ruislip Manor High Street with shops, cafés, restaurants and transport links.

Council Tax band: F

Tenure: Freehold

- Detached bungalow
- Large plot
- Potential to extend
- South facing garden
- No onward chain





Lr LAWRENCE RAND



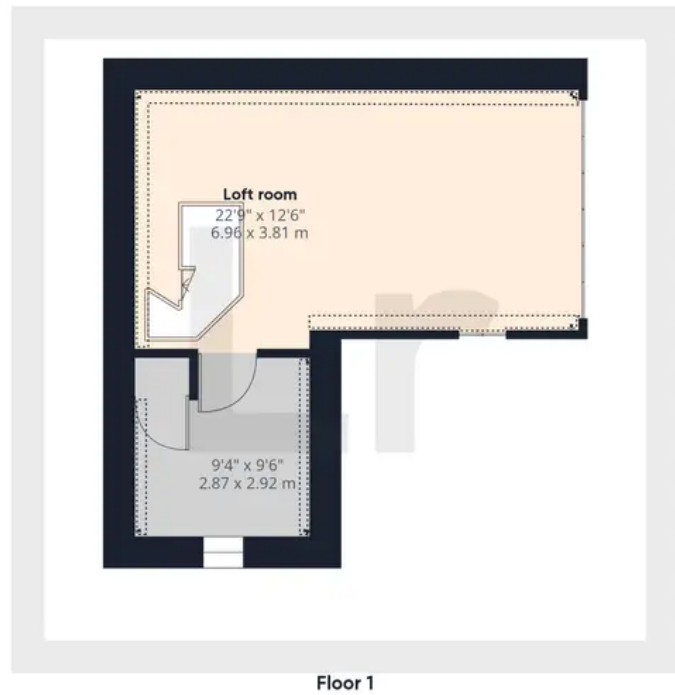
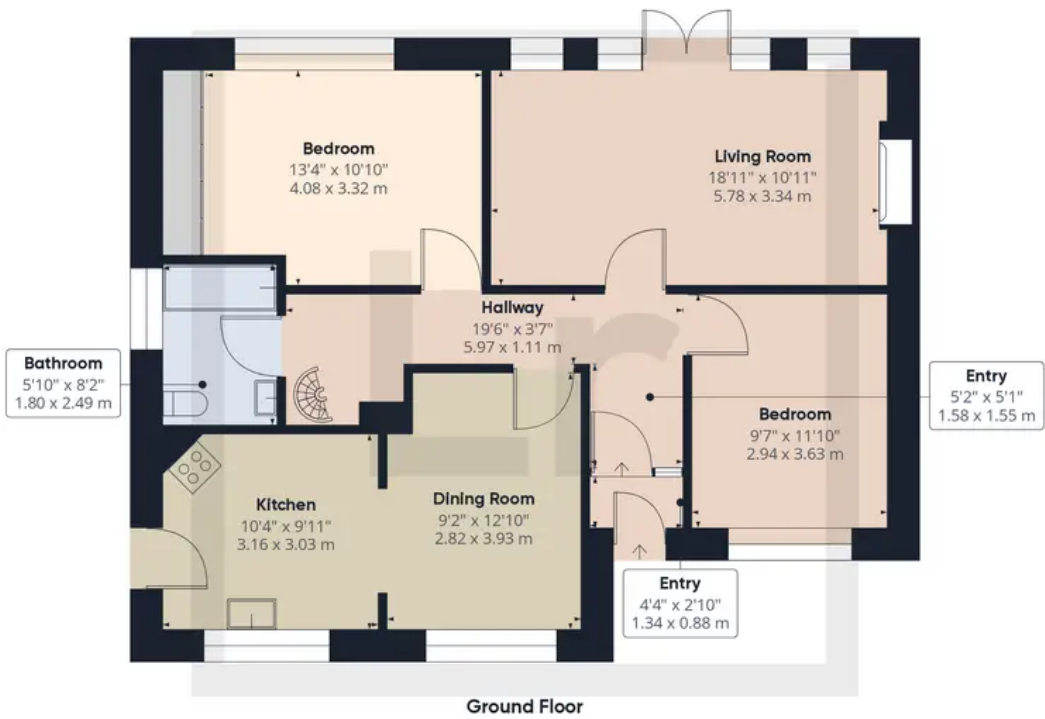
Lr LAWRENCE RAND



Lr LAWRENCE RAND



Lr LAWRENCE RAND



Approximate total area⁽¹⁾

1252.71 ft²
116.38 m²

Reduced headroom

40.26 ft²
3.74 m²

(1) Excluding balconies and terraces

⊞ Reduced headroom (below 1.5m/4.92ft)

While every attempt has been made to ensure accuracy, all measurements are approximate, not to scale. This floor plan is for illustrative purposes only.



Lawrence Rand

Lawrence Rand, 106 Victoria Road - HA4 0AL

01895 632211

Info@lawrence-rand.co.uk

www.lawrence-rand.co.uk/



LAWRENCE RAND