



Persona Homes

by Home Group

KINGFIELDS PARK

HULL

ADLINGTON

2 bedroom house

A collection of two-bedroom homes available with shared ownership in Kingswood, Hull.

These homes are perfectly placed with a wide range of amenities nearby and Hull city centre less than 20-minutes' away. At Kingfields Park, we have homes to suit all tastes. Whether you are a first-time buyer, a growing family, or looking to upsize or downsize, you're sure to find a home that is right for you.



Contact us:

T: 0800 030 8888

E: contactus@yourpersonahome.com

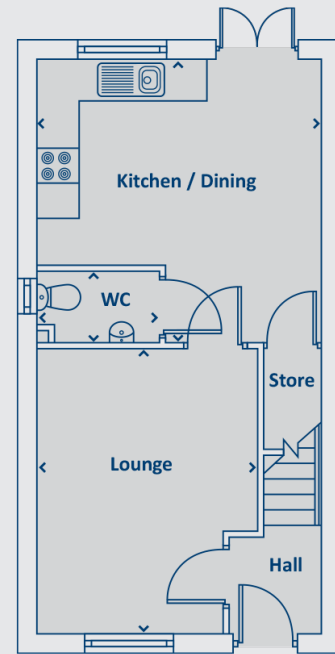
W: yourpersonahome.com

Kingfields Park, Hull, HU7 3NJ

Ground floor

Kitchen/dining 4.1m x 4.2m

Lounge 4.2m x 3.2m



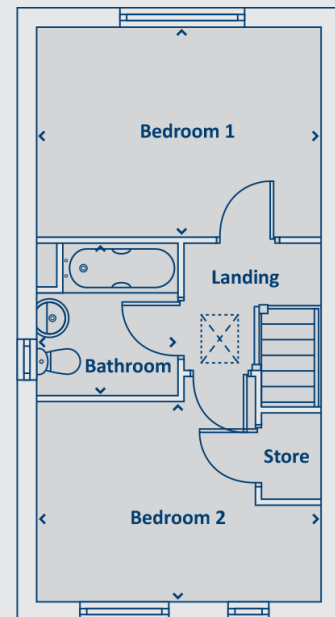
First floor

Master bedroom 3.1m x 4.1m

Bedroom 2 2.9m x 4.2m

Bathroom 2.2m x 2m

Total floor area 71.54m²



Any floor plans are a general outline of the layout of the property for guidance only. All measurements are approximate and may vary and any intending purchasers should not rely on them as statements of fact or representations of fact but must satisfy themselves by inspection or otherwise as to their accuracy. Dimensions shown are not intended to be relied upon for installation of appliances or items of furniture or otherwise. CGI's and images are for illustrative purposes only. Specifications are subject to change. Images are indicative only and may be of previous developments.*Journey times and distances taken from google.com/ maps and are correct before going to print. All times and distances listed are approximate and may vary depending on time of travel.



Persona Homes

by Home Group

KINGSFIELD PARK

HULL

SOWERBY

3 bedroom house

A collection of three-bedroom homes available with shared ownership in Kingswood, Hull.

These homes are perfectly placed with a wide range of amenities nearby and Hull city centre less than 20-minutes' away. At Kingsfield Park, we have homes to suit all tastes. Whether you are a first-time buyer, a growing family, or looking to upsize or downsize, you're sure to find a home that is right for you.



Contact us:

T: 0800 030 8888

E: contactus@yourpersonahome.com

W: yourpersonahome.com

Kingsfield Park, Hull, HU7 3NJ

Ground floor

Kitchen/dining 5m x 3.5m

Lounge 4.1m x 3.8m

First floor

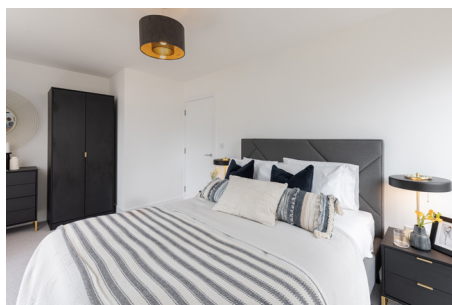
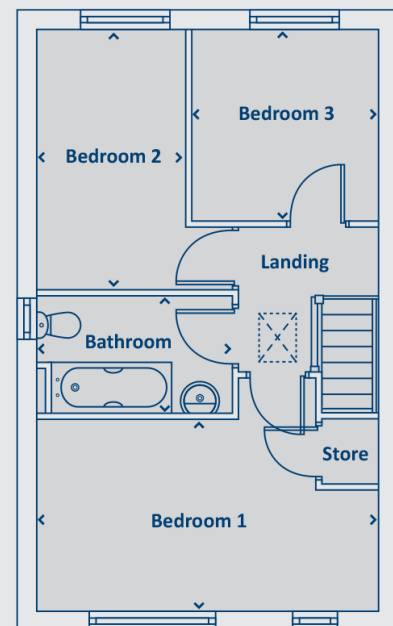
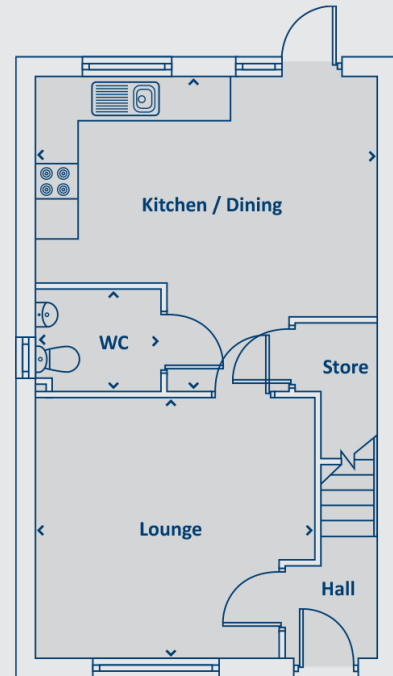
Master bedroom 5m x 2.8m

Bedroom 2 2.2m x 3.8m

Bedroom 3 2.8m x 4.2m

Bathroom 2.8m x 1.7m

Total floor area 85.94m²



Any floor plans are a general outline of the layout of the property for guidance only. All measurements are approximate and may vary and any intending purchasers should not rely on them as statements of fact or representations of fact but must satisfy themselves by inspection or otherwise as to their accuracy. Dimensions shown are not intended to be relied upon for installation of appliances or items of furniture or otherwise. CGI's and images are for illustrative purposes only. Specifications are subject to change. Images are indicative only and may be of previous developments.*Journey times and distances taken from [google.com/maps](https://www.google.com/maps) and are correct before going to print. All times and distances listed are approximate and may vary depending on time of travel.