

Love Homes



Whitebeam Close, Silsoe, Bedfordshire, MK45 4PW

Welcome to Whitebeam Close, an exclusive enclave in charming Silsoe. Presenting a spacious 3-bedroom house with versatile living spaces and stunning features. Upon entry, a grand hall leads to an 18'8 x 12'1 living room, flooded with natural light. The expansive kitchen/diner, 21'3 x 11'10, is the heart of the home with bifold doors opening to the southerly facing garden, ideal for summer gatherings. The ground floor offers a flexible room, suitable as a bedroom, dining area, or office, along with a convenient wet room. Upstairs, two bedrooms boast ensembles for added comfort. Outside, a driveway, open green view, and secluded garden complete the picture of idyllic living.



This property is presented by Stuart Scott - a Love Homes property expert with over 25 years' experience.

Find out more about this property by scanning the QR code.



4.4m



3



1



3

Tenure: Freehold Council Tax Band:F

Flitwick & Ampthill 01525 713111



Barton-le-Clay and Luton 01582 882440



Biggleswade & Sandy 01767 669222



Silsoe lies between Luton and Bedford and probably best known for the English Heritage site of Wrest Park which is a grade 1 listed country house.

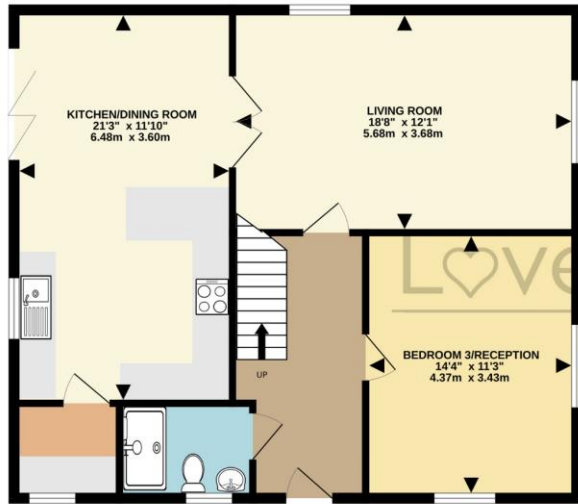
Wrest Park offers a range of visitor options from the gardens to the sculpture gallery, or you can take a leisurely walk in the park which is popular with dog walkers and stop for refreshments at the café.

Silsoe community sports centre offers a wide range of classes and facilities.

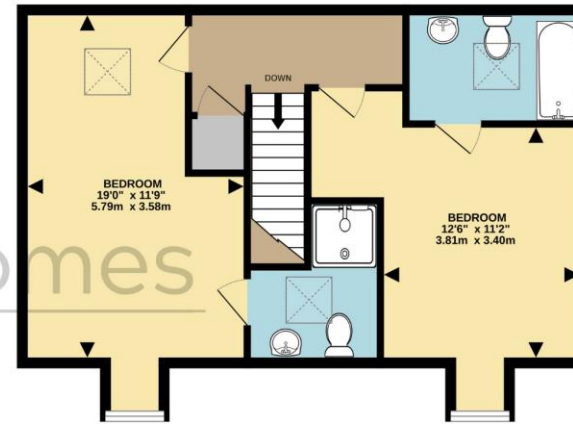
If you're looking for schools Silsoe Pre School offers placements for 2 ½ years to 5 years with Silsoe Lower school placements for 5 – 9 years. Feeder school are then Arnold Middle school in Barton Le Clay and Harlington Upper school in Harlington.



GROUND FLOOR  
804 sq.ft. (74.7 sq.m.) approx.



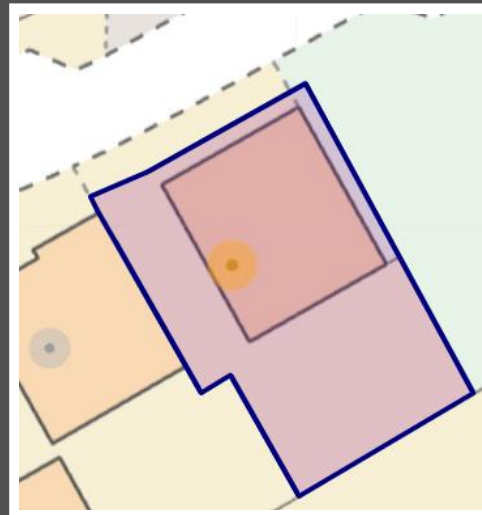
1ST FLOOR  
599 sq.ft. (55.6 sq.m.) approx.



TOTAL FLOOR AREA : 1403 sq.ft. (130.3 sq.m.) approx.

Drawn by Love Homes for illustrative purposes only. Measurements and areas shown are approximate. Made with Metropix ©2024

Score	Energy rating	Current	Potential
92+	A		94 A
81-91	B	85 B	
69-80	C		
55-68	D		
39-54	E		
21-38	F		
1-20	G		



These particulars are set out as a general outline in accordance with the Property Misdescriptions Act (1991) only for the guidance of intending purchasers or lessees, and do not constitute any part of an offer or contract. Details are given without any responsibility, and any intending purchasers, lessees or third parties should not rely on them as statements or representations of fact but must satisfy themselves by inspection or otherwise as to the correctness of each of them. We have not carried out a structural survey and the services, appliances and specific fittings have not been tested. All photographs, measurements, floor plans and distances referred to are given as a guide only and should not be relied upon for the purchase of carpets or any other fixtures or fittings. Gardens, roof terraces, balconies and communal gardens as well as tenure and lease details cannot have their accuracy guaranteed for intending purchasers. Lease details, service ground rent (where applicable) are given as a guide only and should be checked and confirmed by your solicitor prior to exchange of contracts. No person in the employment of Love Homes has any authority to make any representation or warranty whatever in relation to this property. Purchase prices, rents or other prices quoted are correct at the date of publication and, unless otherwise stated, are exclusive of VAT. We retain the copyright in all advertising material used to market this Property. All information is as advised by the seller and subject to change. Council tax bands can be subject to change by the local council.

5 The Russell Centre, Coniston Road, Flitwick, MK45 1QY  
Tel: 01525 713111

Email: [flitwick@lovehomes.uk](mailto:flitwick@lovehomes.uk)

[www.lovehomes.uk](http://www.lovehomes.uk)



**Love Homes**