



41 Mill Road

Armadale, West Lothian, EH48 3QL



Property Summary

This four-bedroom detached bungalow is situated on an established residential street in Armadale and offers all the ease and convenience of single-storey living, as well as being set within beautifully maintained gardens and excellent private parking. The home is set just a stone's throw from excellent amenities, such as shops (including a major supermarket), schools at primary and secondary level, leisure and fitness facilities, eateries, and open green spaces, including a large nature park.

Extras: All fitted floor coverings, window coverings, light fittings, and integrated kitchen appliances will be included in the sale.

Property Features

- Detached bungalow in Armadale
- Hall with built-in storage
- Spacious living room with homely fireplace
- Airy and sunny dining kitchen with external access
- Four well-proportioned double bedrooms
- Attractive, modern shower room
- Generous, beautifully maintained gardens with lawns, shrubbery, and a patio
- Private driveway and timber-frame garage
- Gas central heating and double glazing
- EPC Rating - D





Four well-proportioned
double bedrooms, and
an attractive, modern
shower room







Generous, beautifully
maintained gardens with
lawns, shrubbery, and
a patio





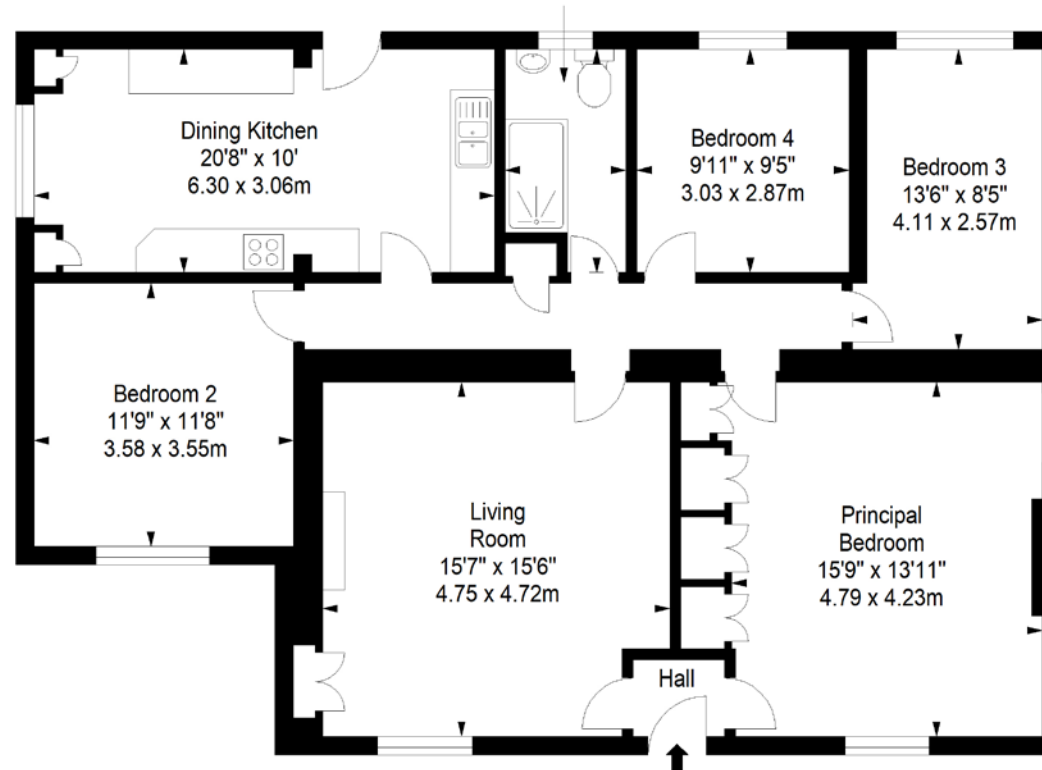
Floorplan

Ground Floor

Approx. 119.9 sq. metres (1290.6 sq. feet)



Shower Room
9'10" x 5'4"
3.00 x 1.63m



Total area: approx. 119.9 sq. metres (1290.6 sq. feet)

All Enquiries to our Property Department:

01501 740345 | ss@sneddons-ssc.co.uk | www.sneddonmorrison.co.uk

14 East Main Street, Whitburn, West Lothian EH47 0RB

IMPORTANT: The selling agents for themselves and for the sellers of the above property give notice that these particulars are for guidance only and their accuracy is not guaranteed. These particulars will not form part of any contract and interested parties should satisfy themselves in all aspects prior to submitting offers. The sellers do not bind themselves to accept the highest offer. S1106