



TWO BEDROOM GROUND FLOOR MAISONETTE

Meadow Road, Pinner, HA6 1EB

ROBSONS

TWO BEDROOM GROUND FLOOR MAISONETTE

Meadow Road, Pinner, HA5 1EB

**GROUND FLOOR • TWO BEDROOMS •
RECEPTION ROOM • DINING AREA • FITTED
KITCHEN • PRIVATE GARDEN • MODERN
THROUGHOUT • CLOSE TO STATION •**

Description

A well presented two-bedroom ground floor maisonette in immaculate condition and modern throughout.

The light and well maintained accommodation comprises an entrance hallway, a spacious reception room leading to the dining area, fitted kitchen, a bathroom and two bedrooms. To the rear, the property benefits from a private and secluded garden, accessed via the French doors from the dining room/kitchen.

The property is located on a sought after residential road, close to West Lodge School and within walking distance to Pinner's Memorial Park, the local shops and Metropolitan Line Underground Station at Pinner Village.





Location

Situated off Eastcote Road just a short walk from Pinner high street, there is a choice of shopping facilities, restaurants, coffee houses and popular supermarkets. Alternatively, Eastcote high street can be found nearby. For commuters, Pinner station provides a regular service into London via the Metropolitan Line, with local bus routes easily accessible. The area is well served by primary and secondary schooling, children's parks/playgrounds and recreational facilities.

Additional Information

Tenure: Freehold

Local Authority: London Borough of Harrow

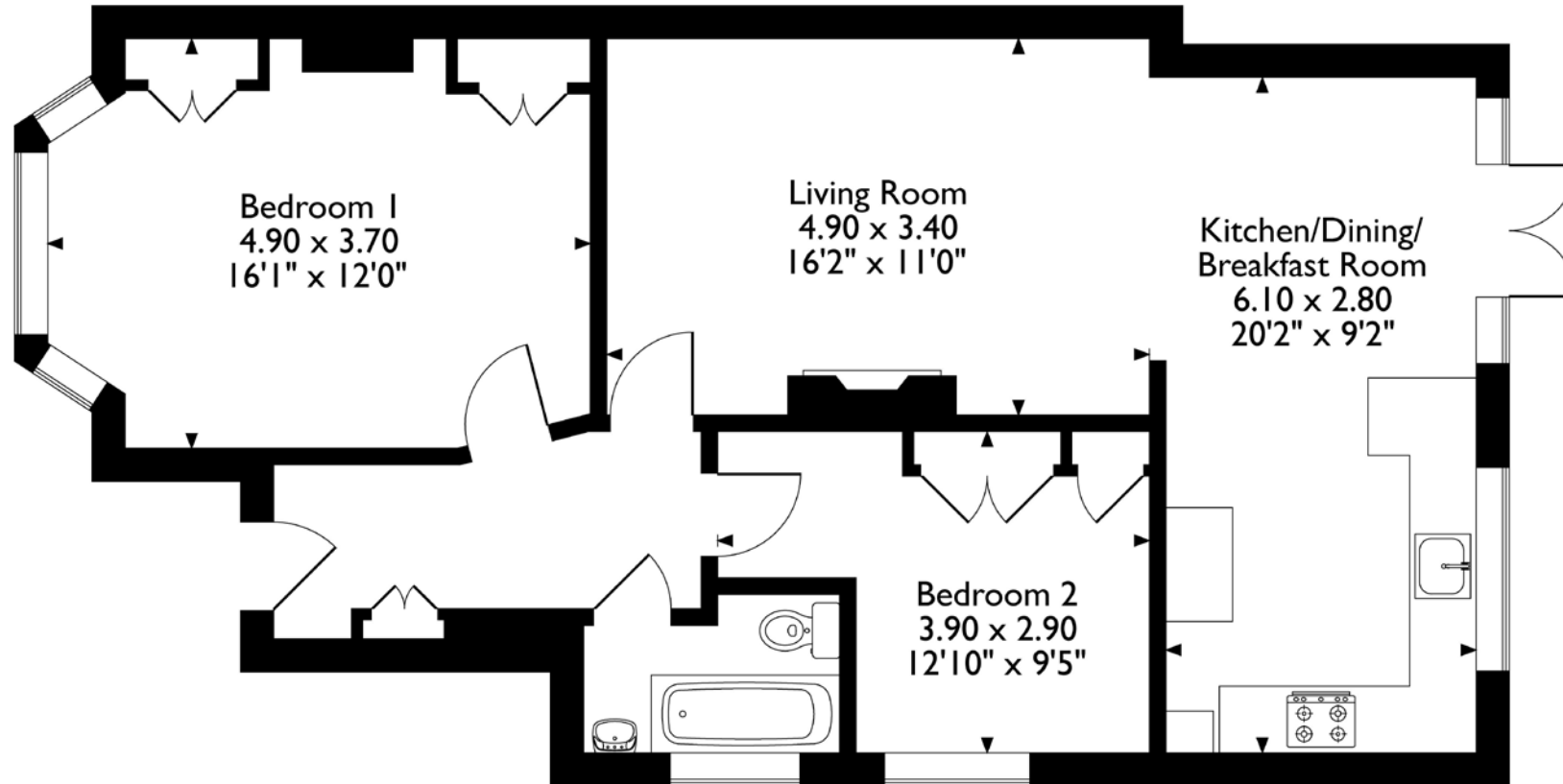
Council Tax: Band D

Energy Efficiency Rating: Band D



Meadow Road, Pinner

Approximate Gross Internal Area 73 Sq M/786 Sq Ft



Please note that the location of doors, windows and other items are approximate and this floorplan is to be used for illustrative purposes only. Unauthorized reproduction is prohibited.

ROBSONS

Tel: 0208 8668083 pinner@robsonswb.com

www.robsonswb.com