



George Street | Hadleigh | IP7 5BB

£325pcm

COMMERCIAL PROPERTY \*Available Now\* Office space to rent within close proximity of Hadleigh high street. Call now to arrange a viewing.

- Commercial Property
- Excellent Location
- Office Space

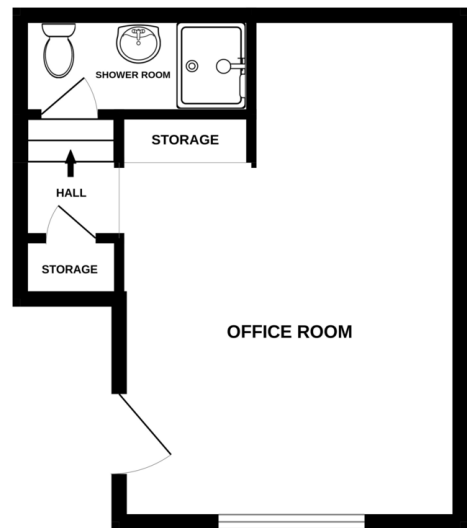
## Approximate Room Sizes

OFFICE SPACE 13' 1" x 17' 3" (3.99m x 5.26m)

Power points. Telephone points. Window to front aspect. Storage cupboard.

Local Authority –  
Council Tax Band –  
Post Code – IP7 5BB

GROUND FLOOR  
296 sq.ft. (27.5 sq.m.) approx.



TOTAL FLOOR AREA: 296 sq.ft. (27.5 sq.m.) approx.

Whilst every attempt has been made to ensure the accuracy of the floorplans contained here, measurements of floors, windows, doors and any other items are approximate and no responsibility is taken for any error, omission or mis-statement. This plan is for illustrative purposes only and should be used as such by any prospective purchaser. The services, systems and appliances shown have not been tested and no guarantee as to their operability or efficiency can be given.  
Made with Memphis C2024

## Agents Note *(All fees are inclusive of VAT)*

- Excellent references will be required by anyone renting through Bychoice
- A deposit equal to five weeks rent will be required
- A holding deposit equal to one weeks rent will be required on application
- Tenants will be required to provide their own contents insurance

## Contact Details

6 King Street, Sudbury, Suffolk, CO10 2EB

Tel: 01787 468400

Email: [sudbury@bychoice.co.uk](mailto:sudbury@bychoice.co.uk)

Agents Note: Whilst every care has been taken to prepare these sales particulars, they are for guidance purposes only. All measurements are approximate are for general guidance purposes only and whilst every care has been taken to ensure their accuracy, they should not be relied upon and potential buyers are advised to recheck the measurements

