



23 Mackinnon Avenue | Kiveton | Sheffield | S26 6QB

£360,000

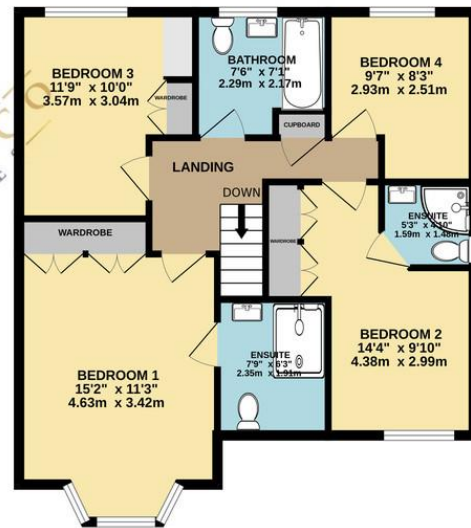
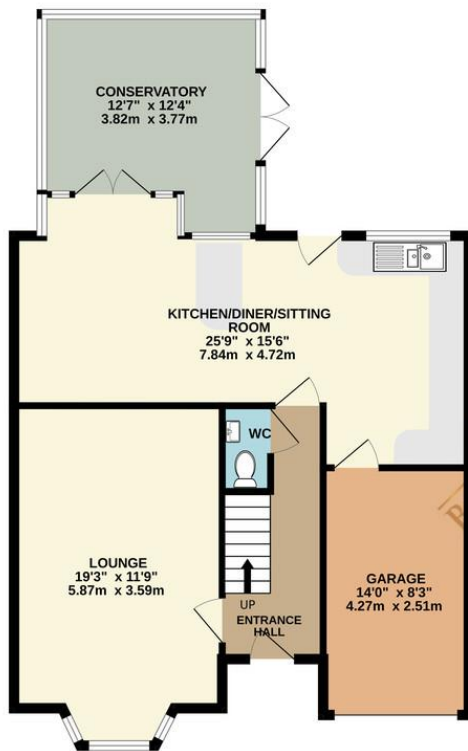
Bell & Co Estates are delighted to present this spacious FOUR BEDROOM DETACHED on this popular estate in Kiveton Park. Looking for a home to move straight into then this is the home for you! In brief the property comprises of Entrance Hallway, front facing spacious Lounge with bay window, downstairs WC with wash basin., large open plan modern Kitchen/Diner with breakfast bar and integrated appliances, Dining and Sitting Area, and Conservatory beaming with natural light overlooking the garden. An integral door allows access into the Garage. To the upstairs FOUR BEDROOMS, three of which are doubles with two of them complete with En-Suites with walk in showers, wash basin and WC and further good sized small double Bedroom. Modern family Bathroom complete with bath, wash basin and WC. To the front of the property is a driveway providing off road parking and grassed area. A side gate allows access into the rear garden where you will find a spacious patio area, grassed area and decking. Positioned on a corner plot position there is plenty of space!

- Four Bedroom Detached Family Home
- Modern Throughout
- Front Facing Lounge
- Open Plan Kitchen with Breakfast Bar
- Conservatory to Rear
- Two Bedrooms with En Suite
- Private Enclosed Garden



GROUND FLOOR
842 sq.ft. (78.2 sq.m.) approx.

1ST FLOOR
659 sq.ft. (61.3 sq.m.) approx.



Contact Details

79 Wales Road
Kiveton Park
Sheffield
South Yorkshire
S26 6RA

www.bellcoestates.com

03333 580590

Agents Note: Whilst every care has been taken to prepare these sales particulars, they are for guidance purposes only. All measurements are approximate and for general guidance purposes only and whilst every care has been taken to ensure their accuracy, they should not be relied upon and potential buyers are advised to recheck the measurements