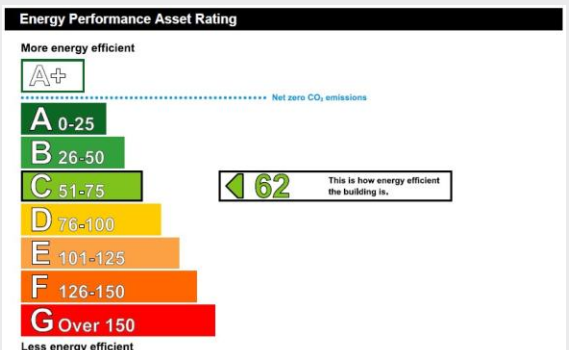


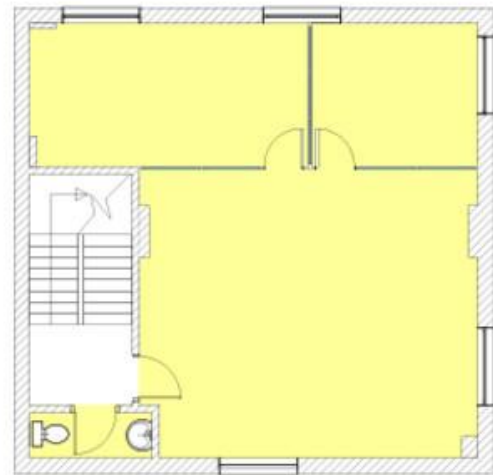
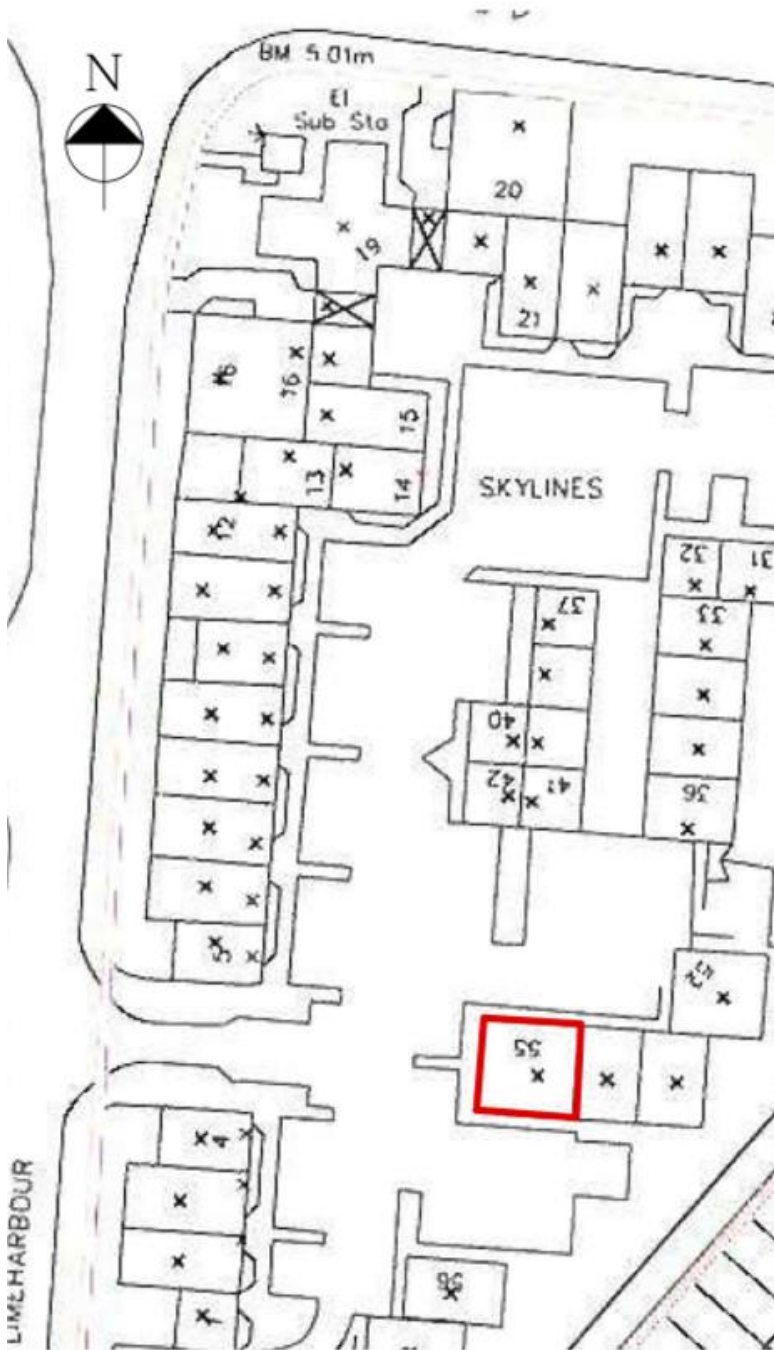


Unit 55, 55 Skyline Business Village, Skyline Business Village

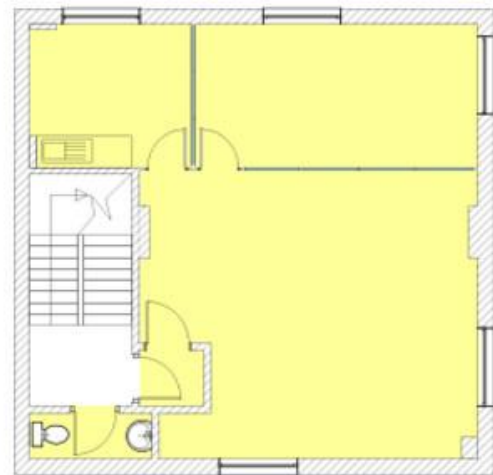
£21,600 pa

Ground floor office space within a single unit of three floors : full repairing lease : within a Business park : Close to Crossharbour and South Quay DLR





SECOND FLOOR



FIRST FLOOR



GROUND FLOOR

1:100 Floor Plan

1:500 Site Plan of Skyline Village

Total Area for building = 2738 sq ft

Area for each floor including share of common parts

Ground = 895.16 sq ft
 First = 921.42 sq ft
 Second = 921.42 sq ft

■ Red outlined areas are demised to the property.

655 Commercial Road, London, E14 7LW

Disclaimer
 River Habitat, their clients and any joint agents give notice that: 1. They have no authority to make or give any representations or warranties in relation to the property. These particulars do not form any part of an offer or contract and must not be relied upon as statements or representations of fact. 2. Any areas, measurements or distances are approximate. The text, photographs and plans are for guidance only and are not necessarily a complete representation of the property. Photographs are taken using a wide angle lens camera. 3. It should not be assumed that the property has all necessary planning, building regulations or other consents and River Habitat have not tested any services, equipment or other facilities. Purchasers must satisfy themselves by inspection or otherwise