



Hyman Hill
FOR SALE
01273 494511



104 Church Green, Shoreham-by-Sea, West Sussex, BN43 6JU

104 Church Green, Shoreham-by-Sea, West Sussex, BN43 6JU

£399,950 Freehold

“ *A very well presented and EXTENDED three-bedroom family home.* ”

Hyman Hill is delighted to offer for sale this very well presented and EXTENDED three-bedroom end of terraced family home located in a highly popular location in Shoreham.

On the ground floor the property benefits from a good-sized lounge, kitchen leading into the dining room and cloakroom.

The first floor comprises of three bedrooms and a very well-presented shower room.

There is a paved SOUTH FACING rear garden and access to side. This property comes with TWO ALLOCATED parking spaces.

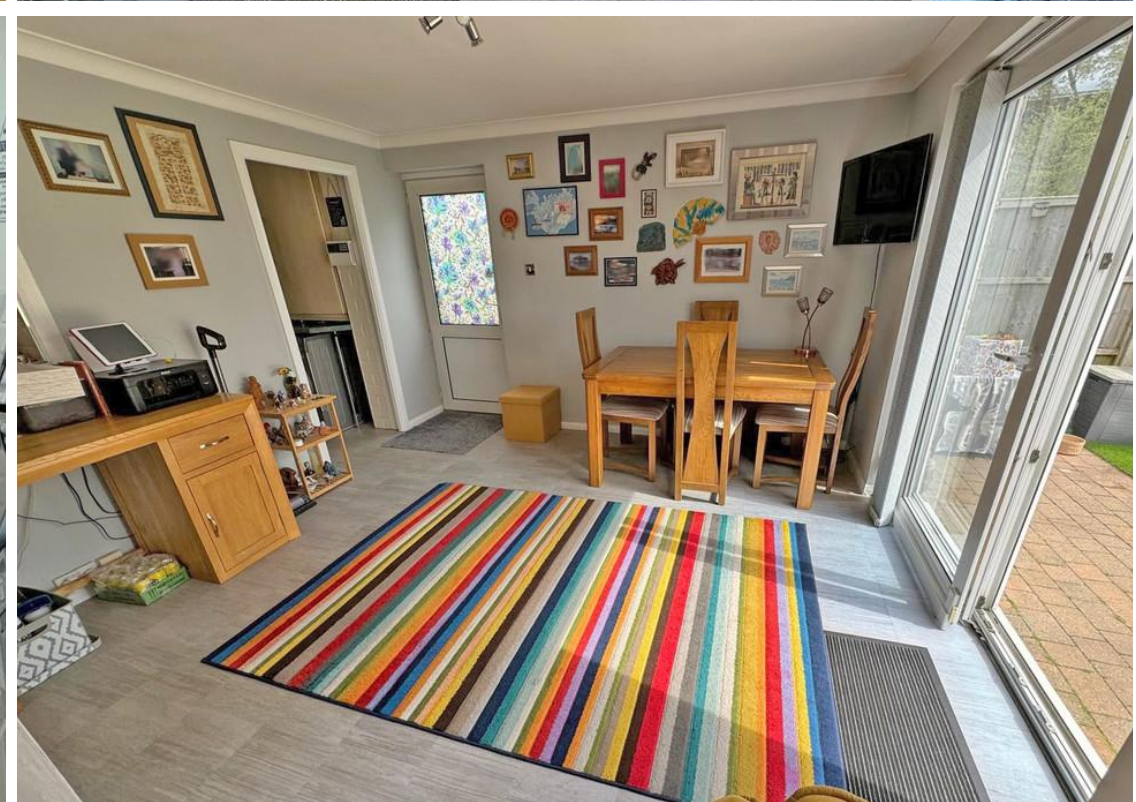
Viewing is a considered a must!!

Shoreham-by-Sea is a charming, historic town, 7 miles west of Brighton and 6 miles east of Worthing. The town centre is vibrant offering lots of independent and corporate shops, cafes, pubs and restaurants. The Holmbush Shopping Centre can be found close by providing a large M&S, Next and Tesco.

There is excellent access to the east/west A27 & M23 and public transport services including Shoreham-by-Sea mainline railway station is only a short walk away offering direct trains to Brighton, London and to the west. The property is in catchment of Primary & Secondary schools, including popular Shoreham Academy with its ‘Outstanding’ Ofsted rating.

Shoreham by Sea also benefits from a highly popular Beach, South Downs National Park and River Adur affording fantastic water sports and walking opportunities.

-
- Extended family home
 - Three bedrooms
 - Lounge plus kitchen diner
 - Ground floor cloakroom
 - Very well-presented shower room
 - South facing rear garden
 - Off road parking
 - Shoreham academy catchment area





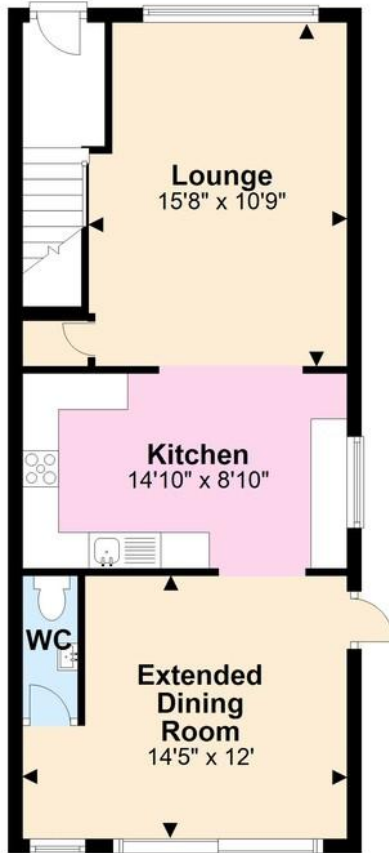






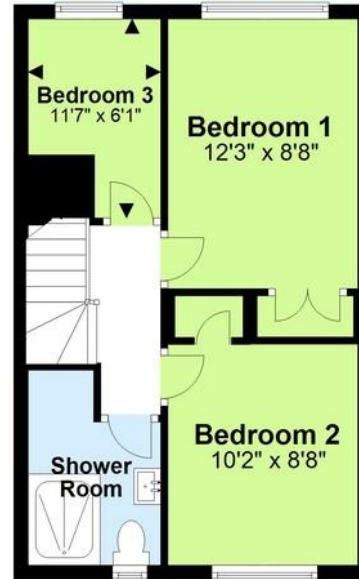
Ground Floor

Approx. 549.7 sq. feet



First Floor

Approx. 373.5 sq. feet



Total area: approx. 923.2 sq. feet

For illustrative purposes only. Not to scale.
Plan produced using PlanUp.

104 Church Green, Shoreham

Useful Information

Council Tax Band: C - £2,053.69
per annum (2024/2025)

Tenure: Freehold

Local Authority: Adur District
Council

Hyman  Hill
Estate & Letting Agent

To book a viewing, or a valuation of your own property, get in touch with one of our experts.

Southwick – 01273 597730
info@hymanhill.co.uk

Shoreham – 01273 454511
shoreham@hymanhill.co.uk

Lettings – 01273 597730
lettings@hymanhill.co.uk

www.hymanhill.co.uk