



26 Tokio Road, Copnor

Portsmouth

Offers in Region of £230,000

 chinneckshaw



26 Tokio Road

Copnor, Portsmouth

A lovely two bedroom house, perfect for first time buyers and located in this popular part of Copnor. With neutral décor throughout, a large modern kitchen and a south facing garden we think it's ready to move straight into. Situated just minutes from local amenities on Copnor Road and Ocean Retail Park, good primary schools are within walking distance and the house is within the ALNS catchment. Easy access to the Eastern Road and recreation facilities at Baffins Pond and Great Salterns make this home a great place for all ages.

The front door opens into a passage way hallway with the Lounge on your right hand side. This room has an imposing bay window to the front aspect making it a comfortable place to relax in. Next comes the Dining Room. It's the full width of the house so a great size and shape and you'll find a doorway here giving you access into the rear garden.

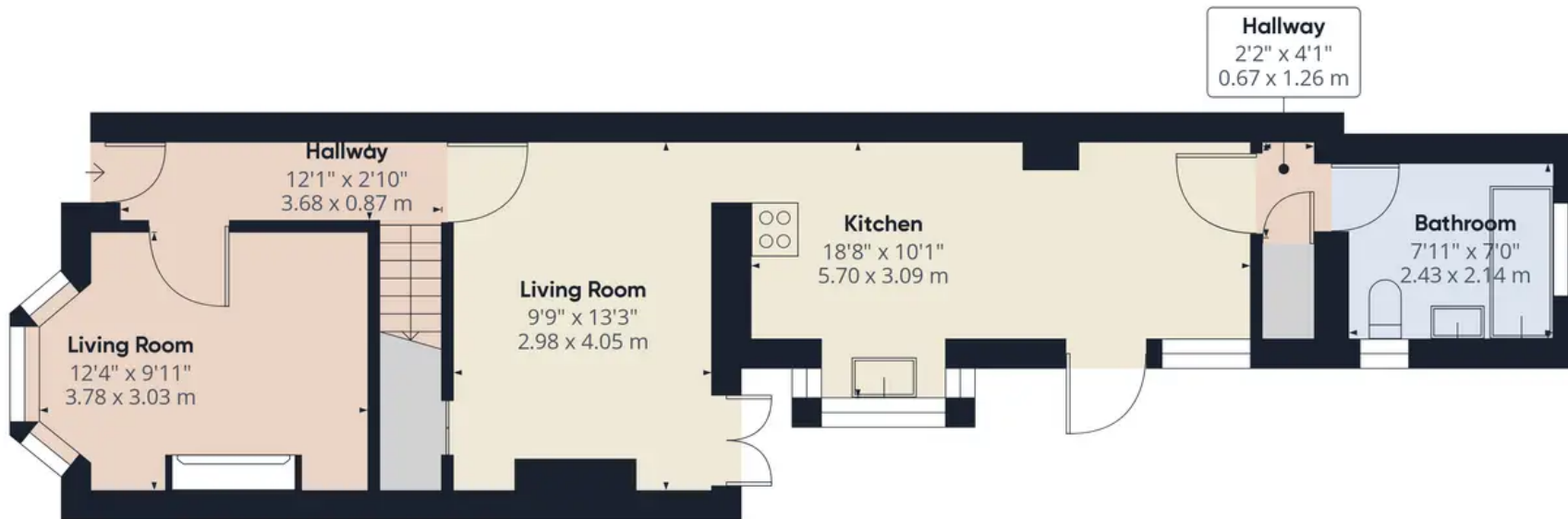
Next comes our favourite part of the property! The Kitchen is just lovely. It's been well thought out with a range of fitted wall and base cabinets and provides you with plenty of work and storage space. A doorway leads out into the rear garden plus you'll find a small rear lobby area with access to a large storage cupboard which houses the boiler. From here you'll see the Bathroom. It's very serviceable but in time you may want to remodel it to your own taste and design.

Upstairs are two double bedrooms. Both rooms are a great size and ready to move straight into. Outside, the south facing garden is a good useable size, laid to patio and the perfect space to spend time in when the sun does come out.

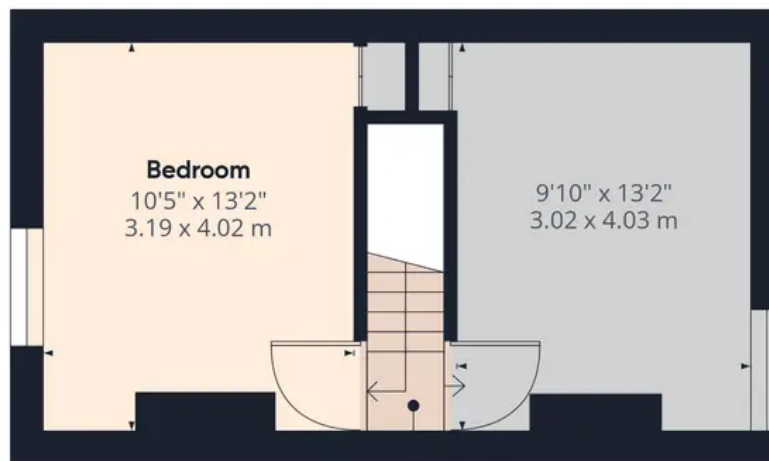
This home is beautifully presented and ready to move in and would be perfect for a FTB, someone looking to downsize or an investor looking for a ready to rent home.

Council Tax band: B Tenure: Freehold





Ground Floor



Landing

Floor 1

Approximate total area⁽¹⁾

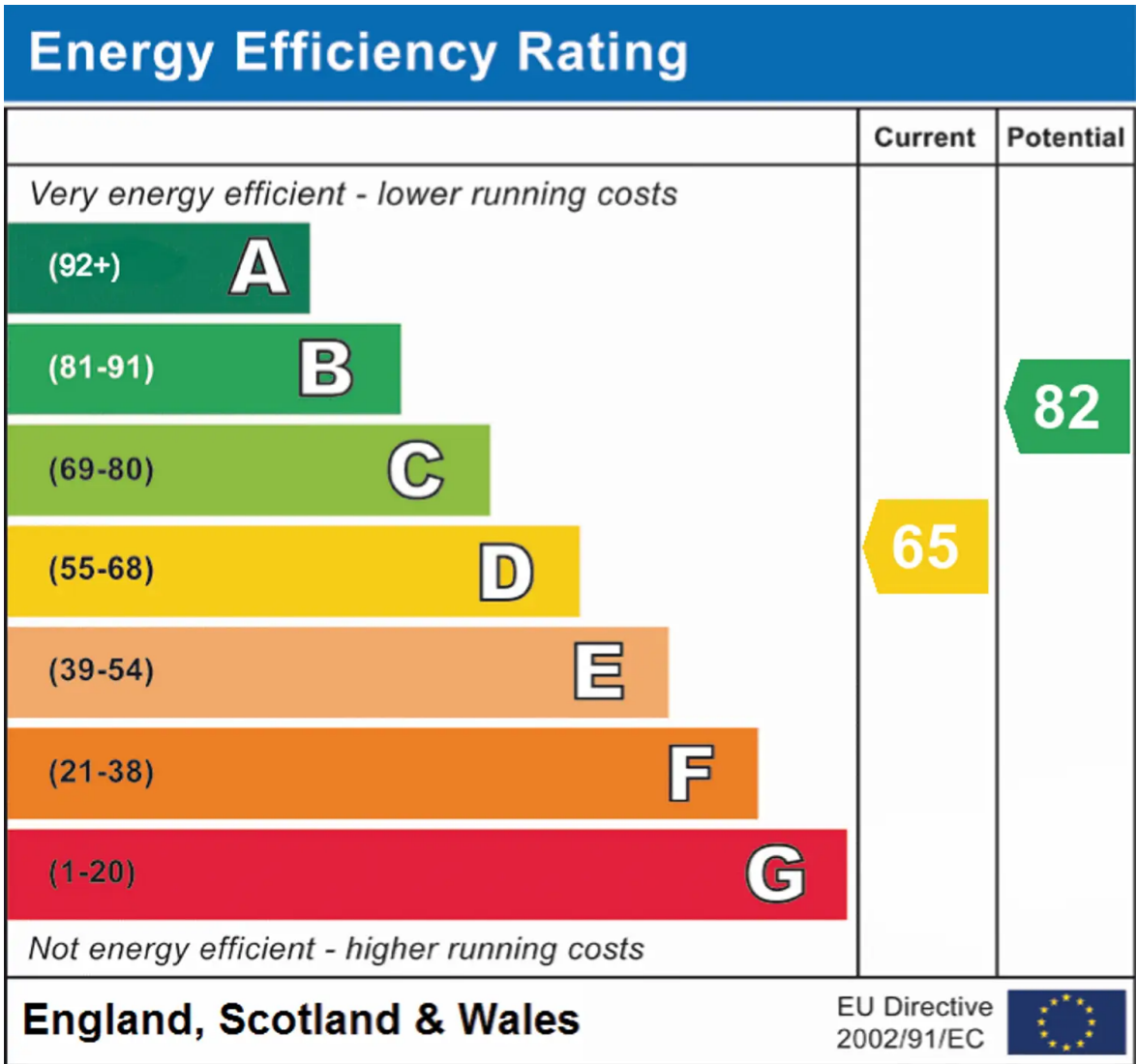
810.76 ft²

75.32 m²

(1) Excluding balconies and terraces

While every attempt has been made to ensure accuracy, all measurements are approximate, not to scale. This floor plan is for illustrative purposes only.

GIRAFFE360



Chinneck Shaw

Bridge House, Milton Road, Portsmouth – PO3 6AN

023 9282 6731

hello@chinneckshaw.co.uk

www.chinneckshaw.co.uk/

Chinneck Shaw, Bridge House, Milton Road, PO3 6AN Consumer Protection from Unfair Trading Regulations 2008: These details are for guidance only and complete accuracy cannot be guaranteed. If there is any point which is of particular importance, verification should be obtained. The do not constitute a contract or part of a contract. All measurements are approximate. No guarantee can be given with regard to planning permissions or fitness for purpose. No apparatus, equipment, fixture or fitting has been tested. Items shown in the photographs are NOT necessarily included. Interested Parties are advised to check availability and make an appointment to view before travelling to see a property.