

THE ROSEWOOD EDGEFIELD GREEN



Artist's impression

KEY FEATURES

- One double bedroom
- Two single bedrooms
- Open plan kitchen/dining area
- Downstairs W.C.
- Spacious living room
- En-suite from master bedroom
- Patio doors to rear garden
- Driveway parking



The Rosewood Shared Ownership plots

49-53, 92-95, 98-100,
110-111, 144-145,
152-153, 184-185,
188-189, 208-210,
213-215

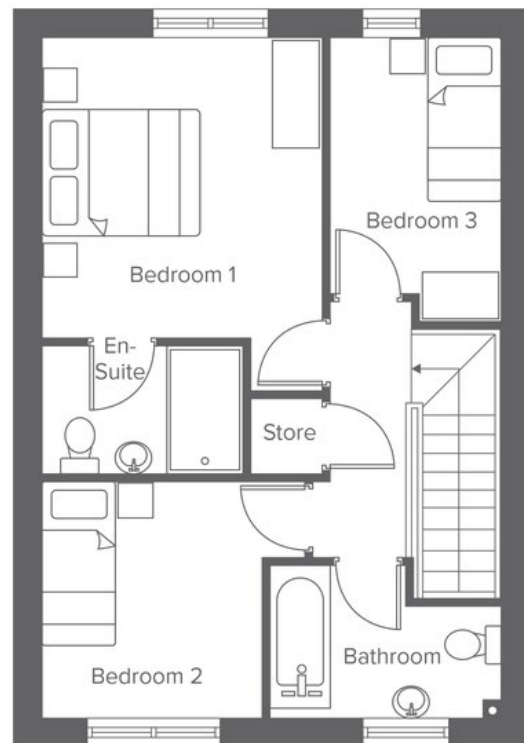
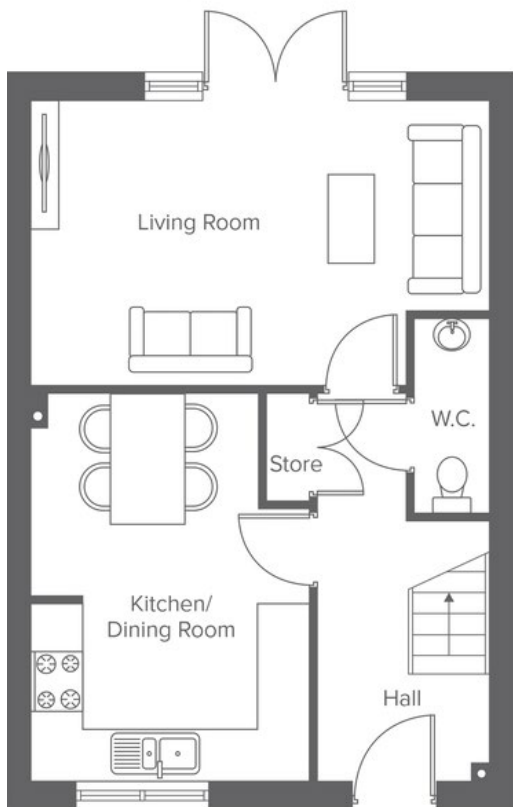
Rent to Buy plots

19, 101-105

EDGE LANE, OPENSHAW, MANCHESTER, M11 1DA
A range of stylish 2, 3 & 4-bedroom houses and 1 & 2-bedroom apartments

THE ROSEWOOD EDGEFIELD GREEN

3-bedroom home, sleeps 4




Total size: 87.6 sqm, 943 sqft


Ground Floor	Metric	Imperial
Kitchen/Dining	4.6 x 3.3	15'1" x 10'9"
Living Room	3.4 x 5.4	11'1" x 17'8"
W.C.	2.3 x 0.9	7'6" x 2'11"


First Floor	Metric	Imperial
Bedroom 1	3.5 x 3.3	11'5" x 10'9"
Bedroom 2	2.8 x 2.6	9'2" x 8'6"
Bedroom 3	3.3 x 2.1	10'9" x 6'10"
Bathroom	1.8 x 2.8	5'10" x 9'2"
En-Suite	1.5 x 2.4	4'11" x 7'10"


CONTACT OUR TEAM

 0161 516 3779

 yourhousinggroup.co.uk

 @yourhousinggroup

 @Your_Housing

 @yourhousing