



76 Beverley Crescent, Woodford Green
Woodford Green

Prices From **£700,000**



76 Beverley Crescent

Woodford Green, Woodford Green

Well appointed three-bedroom Semi-Detached family home, located on the desirable Laing Estate in Woodford IG8

Council Tax band: E

Tenure: Freehold

EPC Energy Efficiency Rating: D

EPC Environmental Impact Rating: E

- Three Bedrooms Semi-Detached House
- Two Spacious Receptions
- New Fitted Kitchen
- Neutral Decor Throughout
- Garage & Driveway
- Mature Garden
- Located on the Laing Estate
- Close to Churchfield School
- Potential to Extend (STP)
- Available Chain Free





Kitchen

New fitted Kitchen, with new appliances.

Hallway & Landing

Hallway & Landing

Front Reception

Front reception with new carpets and blinds.

Rear Reception

Rear reception with access to the garden.

Family Bathroom

Family bathroom with bath, overhead shower, sink and W/C.

Bedroom Three

Bedroom three, front facing

Bedroom Two

Bedroom two, garden rear facing.

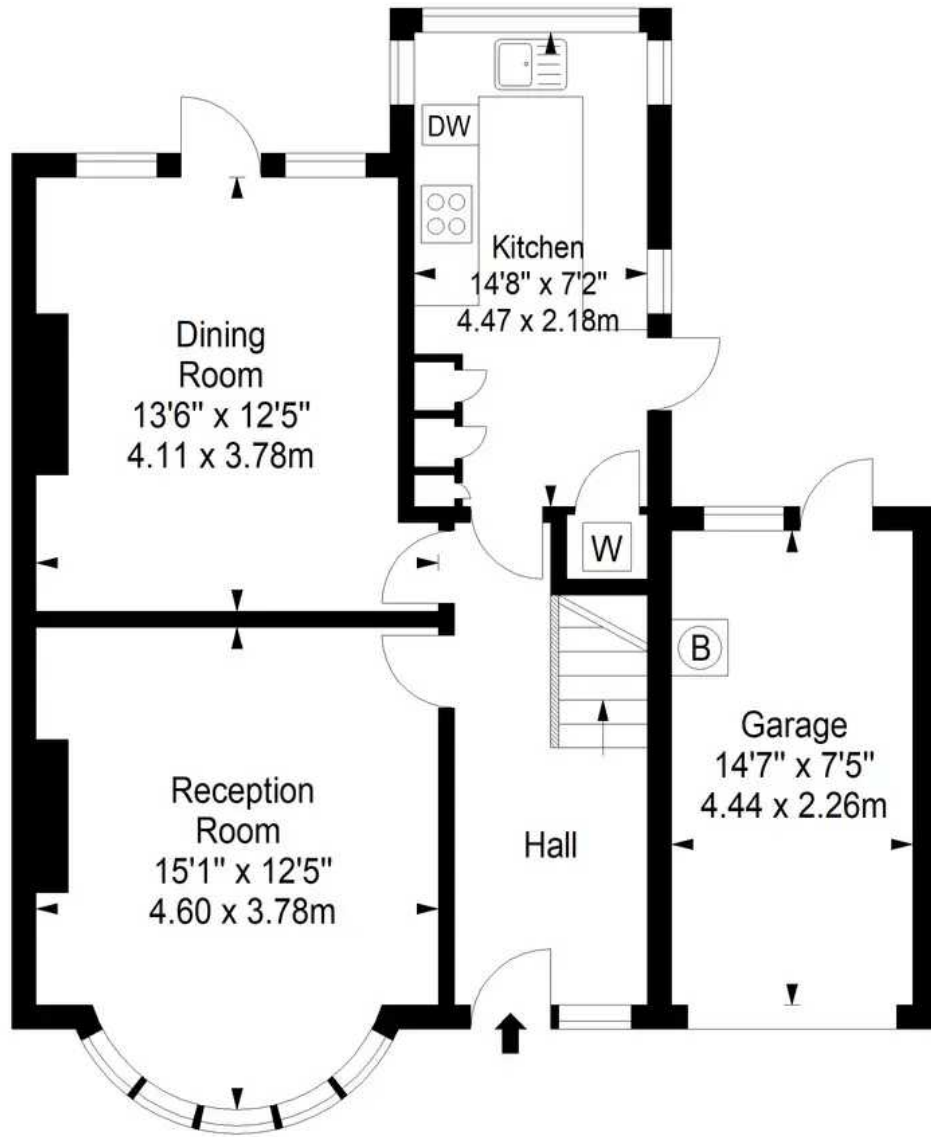
Bedroom One

Bedroom One, front facing

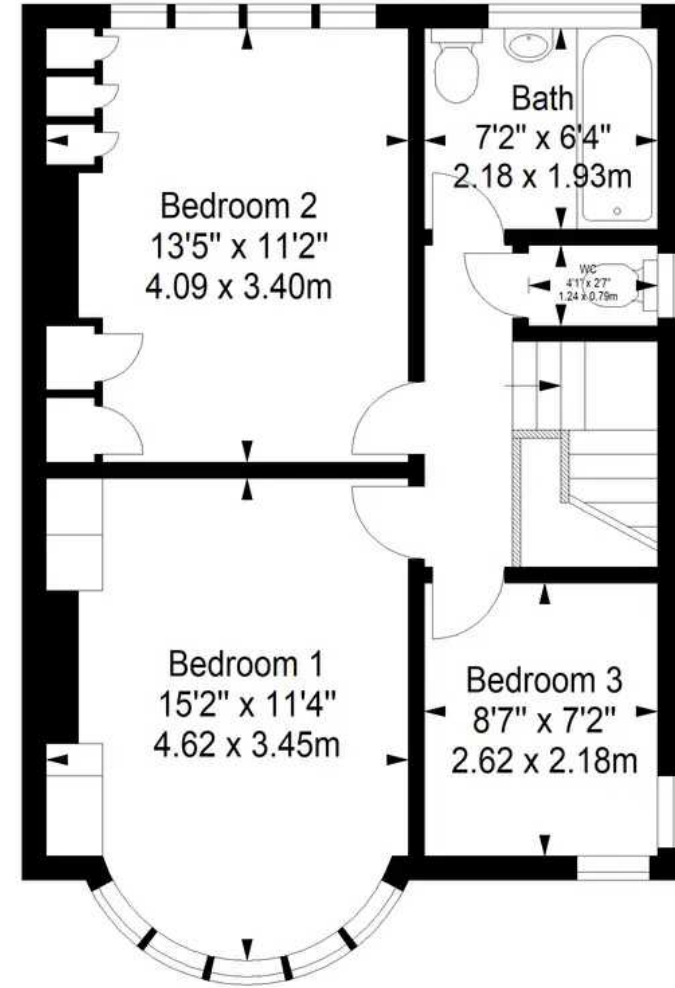




Ground Floor



First Floor



Approximate gross internal floor area 109.2 sq m/ 1175.5 sq ft

Whilst every care has been taken to ensure accuracy, dimensions are approximate and for illustrative purposes only.

All rights reserved.



Youngs Residential

2-16 Lionel Road, Canvey Island - SS8 9DE

020 8226 0071 • richard.harman@youngsresidential.com • youngsresidential.com/