



**Coopers**

Prince Of Wales Road, Chapelfields, Coventry CV5 8GQ

Guide Price £250,000





**Coopers**

## Prince Of Wales Road

Chapelfields, Coventry

Enjoying a very popular location just off Allesley Old Road, this three bedroom end terraced home offers great value. Hall, large through lounge, together with a wide breakfast kitchen extension at the rear with a WC off. Early inspection strongly advised. Pleasant gardens with garage at rear.

Council Tax band: C

Tenure: Freehold

EPC Energy Efficiency Rating: D

EPC Environmental Impact Rating: E

- End terraced family home
- Popular and convenient location
- Through living room and breakfast kitchen extension
- Three bedrooms and bathroom
- Gardens and garage at rear
- Great value for money



**Coopers**



**Coopers**



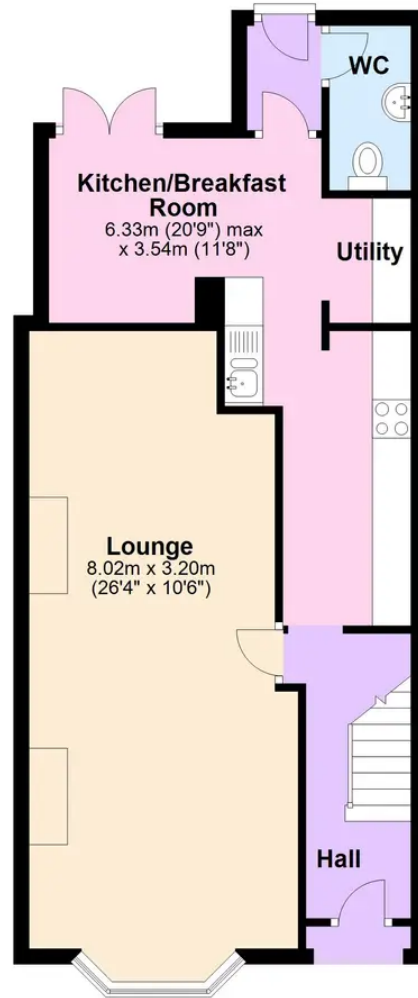
**Coopers**





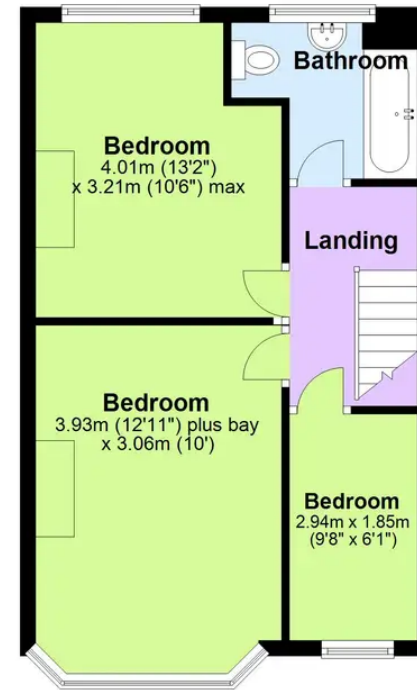
### Ground Floor

Approx. 51.9 sq. metres (558.6 sq. feet)



### First Floor

Approx. 40.1 sq. metres (431.3 sq. feet)



Total area: approx. 92.0 sq. metres (989.9 sq. feet)

This floor plan is for illustrative purposes only and should be used as such by any prospective purchaser. Whilst every attempt has been made to ensure the accuracy of this plan, measurements of doors, windows, rooms and other items are approximate and no responsibility is taken for any error, omission or mis-statement.  
Plan produced using PlanUp.

# Coopers Estate Agents

Coopers, 22 New Union Street - CV1 2HN

024 7655 2841 • sales@coopersestateagents.com • www.coopersestateagents.com/

Coopers Chartered Surveyors Ltd, 22 New Union Street, Coventry, West Midlands

CV1 2HN, 024 7655 2841, sales@coopers-cov.com. Company Registration

Number: 6725089 / VAT number: 940 3555 34