



6 Coniston Avenue, Copnor

Portsmouth

Offers in Region of £380,000

 chinneckshaw



6 Coniston Avenue

Copnor, Portsmouth

Beautifully presented, this three bedroom extended house in Coniston Ave, Copnor is stunning. Within easy walking distance to many local amenities including local shops, schools and parks so it would make a great family home for those of you looking to move into the area. The current owners have lived here for many years and in that time have continuously improved and updated the home you see today. They love living here but the time has come to try pastures new so here's your chance to buy this great home.

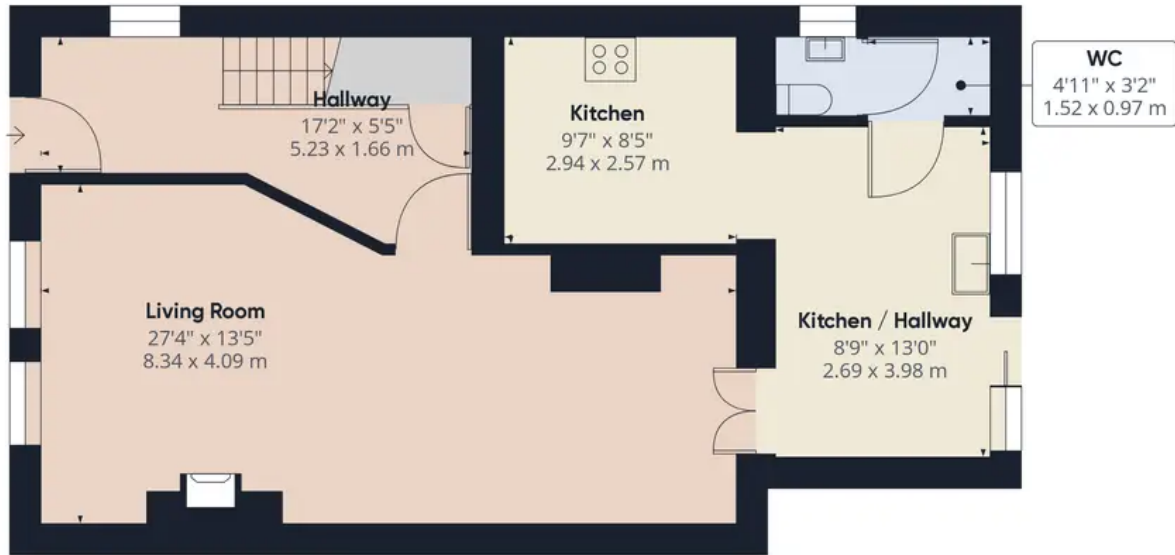
The entrance hall feels light and airy and leads through to our favourite part of the house...we love it! The open plan design Lounge Dining Room has a clean neutral décor and space a plenty to organise your furniture. The large bay window also dominates this room making it a nice place to relax in front of the TV or to entertain your friends and family!

From here you'll walk through into the extended Kitchen Breakfast Room. The kitchen itself is well executed with a range of cream gloss slab style wall and base cabinets and flows around the room providing plenty of storage and countertop space. There are sliding patio doors from here into the garden plus access also to a walk in utility cupboard and cloakroom with WC and basin. On the first floor you'll find a large, naturally light landing area and three large bedrooms. All the bedrooms are neutrally decorated and ready to move straight into. The Shower Room has a modern fitted suite with contemporary tiling.

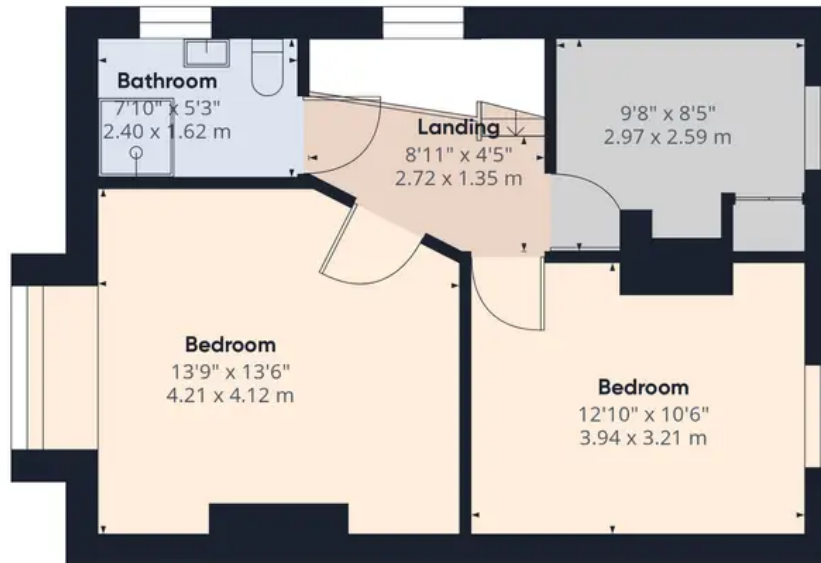
Outside is where this house really shines. It's got such a large garden with artificial lawn and a decking area too. At the rear of the garden you have a large wooden summerhouse which we think could be used for a number of uses. All in all this is a great space and perfect for those summer barbecues! Lastly, there is side access here too. All in all we think this is a wonderful family home, ready to move in to and enjoy family time both indoors and out.

Tenure: Freehold





Ground Floor



Floor 1

Approximate total area⁽¹⁾

1143.81 ft²
106.26 m²

(1) Excluding balconies and terraces

While every attempt has been made to ensure accuracy, all measurements are approximate, not to scale. This floor plan is for illustrative purposes only.

GIRAFFE360



Chinneck Shaw

Bridge House, Milton Road, Portsmouth – PO3 6AN

023 9282 6731

hello@chinneckshaw.co.uk

www.chinneckshaw.co.uk/

Chinneck Shaw, Bridge House, Milton Road, PO3 6AN Consumer Protection from Unfair Trading Regulations 2008: These details are for guidance only and complete accuracy cannot be guaranteed. If there is any point which is of particular importance, verification should be obtained. The do not constitute a contract or part of a contract. All measurements are approximate. No guarantee can be given with regard to planning permissions or fitness for purpose. No apparatus, equipment, fixture or fitting has been tested. Items shown in the photographs are NOT necessarily included. Interested Parties are advised to check availability and make an appointment to view before travelling to see a property.