

81 Crows Road

Epping, Epping

Council Tax band: D

Tenure: Freehold

- FOUR BEDROOM FAMILY HOME
- OFF ROAD PARKING
- CLOSE TO SCHOOLS
- SHORT WALK TO HIGH STREET
- SIDE ACCESS
- UTILITY ROOM
- OFFICE/ GYM IN REAR GARDEN
- TWO MODERN BATHROOMS
- SOUTH FACING GARDEN



Porch Area

Internal Porch Area

Hallway

Double doors from Porch leading to the hallway

Lounge

17' 3" x 12' 6" (5.25m x 3.81m)

Kitchen

10' 5" x 8' 3" (3.17m x 2.51m)

Family/ Dining Room

8' 9" x 17' 5" (2.66m x 5.31m)

Dining Room/ Study

7' 6" x 8' 5" (2.29m x 2.57m)

Utility Room & Wc

Wc, Basin and space for white goods.

First Floor

Bedroom Two

12' 12" x 10' 4" (3.95m x 3.16m)

Bedroom Three

11' 9" x 10' 7" (3.59m x 3.23m)

Bedroom Four

7' 8" x 8' 2" (2.34m x 2.5m)

Master Bedroom

15' 11" x 12' 12" (4.84m x 3.96m)

En-suite Shower Room

Shower, Wc & Basin

Outdoor Home Office/ Gym

11' 3" x 7' 5" (3.44m x 2.27m)





Hammond
& Smith



Hammond
& Smith

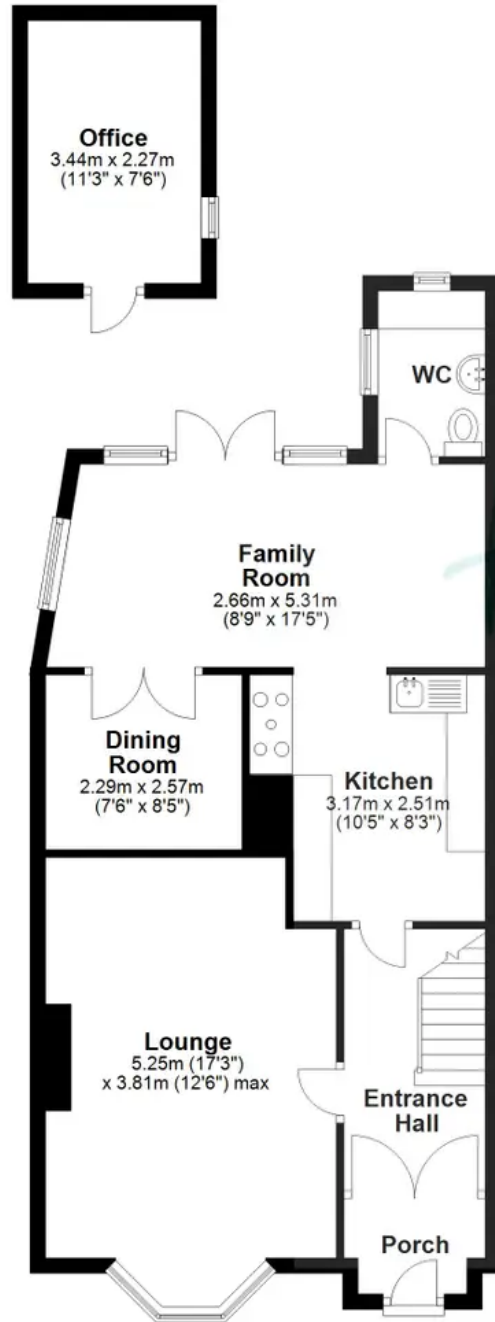


Hammond
& Smith

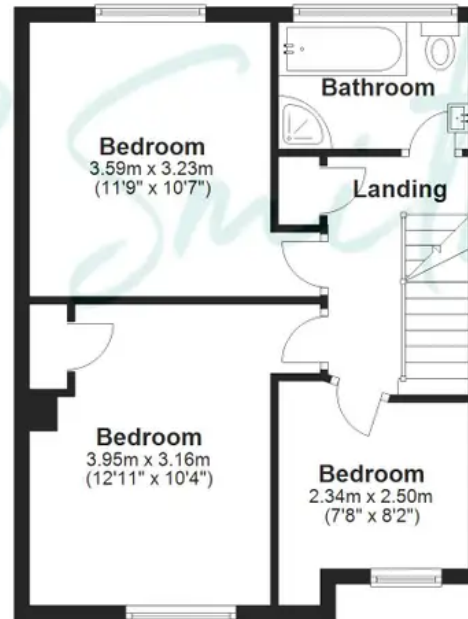


Hammond
& Smith

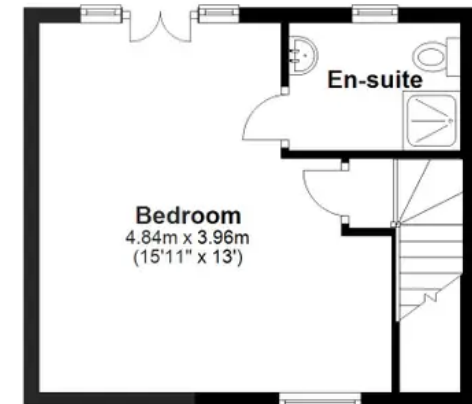
Ground Floor



First Floor



Second Floor



Total area: approx. 141.0 sq. metres (1517.6 sq. feet)

Floorplans are provided for guidance only. They are not to scale & must not form any part of a legal contract or be reproduced
Plan produced using PlanUp.