

Compton

Bloomsbury

55 Gower Street
WC1E 6HJ

Attractive, self-contained period building, with a private rear courtyard garden

For Rent
2,843 ft²

020 7101 2020
compton.london

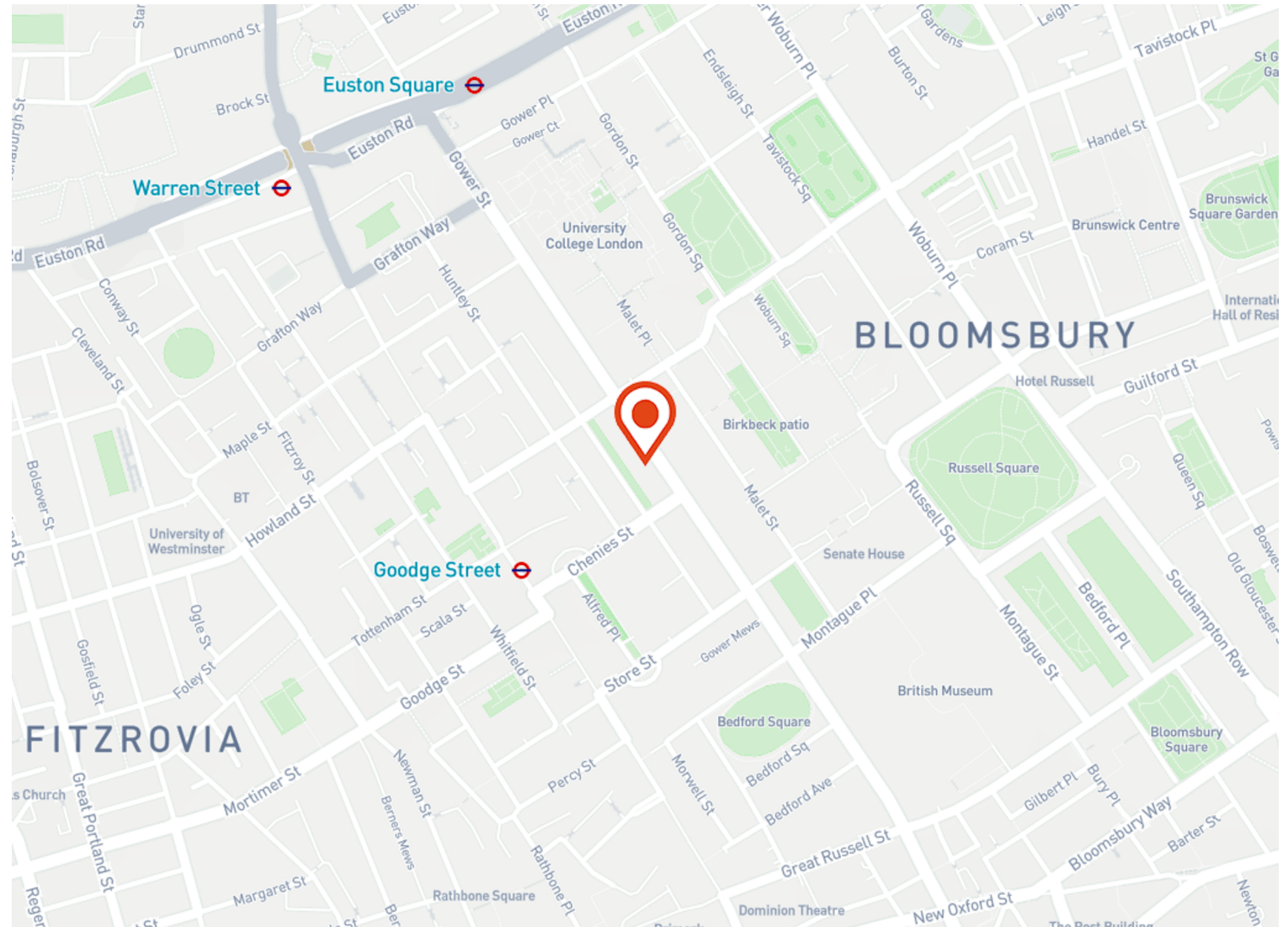


Compton

Bloomsbury
55 Gower Street
WC1E 6HJ

Attractive, self-contained period building, with a private rear courtyard garden

For Rent
2,843 ft²



Location

55 Gower Street is situated in Bloomsbury, London's fashionable, cultural and intellectual heart and is surrounded by coffee shops, bars, restaurants and numerous retailers.

The property is also a short walk from several main line stations, namely; Tottenham Court Road, Russell Square, Gode Street and Holborn. The Elizabeth Line has revolutionised journey times travelling from East to West and within Central London through Tottenham Court Road.

Compton

Bloomsbury
55 Gower Street
WC1E 6HJ

Attractive, self-contained period building, with a private rear courtyard garden

For Rent
2,843 ft²



Compton

Bloomsbury
55 Gower Street
WC1E 6HJ

Attractive, self-contained period building, with a private rear courtyard garden

For Rent
2,843 ft²



020 7101 2020
compton.london

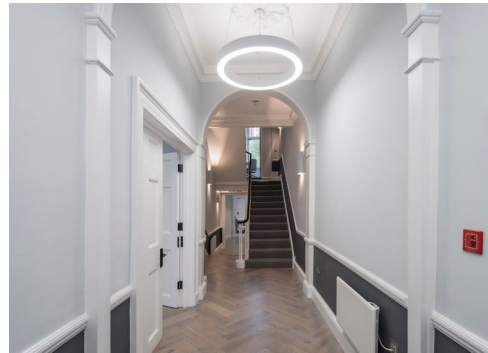
Exterior

Compton

Bloomsbury
55 Gower Street
WC1E 6HJ

Attractive, self-contained period building, with a private rear courtyard garden

For Rent
2,843 ft²



Compton

Bloomsbury

55 Gower Street
WC1E 6HJ

Attractive, self-contained period building, with a private rear courtyard garden

For Rent

2,843 ft²

Amenities

- Self contained office building
- Available with a full fit out in situ to include 35 workstations
- Private courtyard garden
- Exquisite period features
- WC's and kitchen facilities

Description

55 Gower Street is an attractive self-contained period building with historic significance, providing approximately 2,843 sq ft of office accommodation in the heart of Bloomsbury. The space is fully furnished and flexible terms are available.

Bloomsbury

55 Gower Street
WC1E 6HJ

Attractive, self-contained period building, with a private rear courtyard garden

For Rent

2,843 ft²

Content

Watch the film



View on Website



Landlord

The Bedford Estates

Lease Term

New full repairing & insuring lease (on the Estates standard terms) available for a term by arrangement

Possession

Available

VAT

The property is elected for VAT

Local Authority

The London Borough of Camden

Bloomsbury
55 Gower Street
WC1E 6HJ

Attractive, self-contained period building, with a private rear courtyard garden

For Rent
2,843 ft²

Floor Areas & Outgoings

The accommodation comprises the following areas:

Name	sq ft	Rent (sq ft)	Rates Payable (sq ft)	Service Charge (sq ft)	Total month	Total year	Availability
3rd	495	£57.50	£18	n/a	£3,114.38	£37,372.50	Under Offer
2nd	551	£57.50	£18	n/a	£3,466.71	£41,600.50	Under Offer
1st	624	£57.50	£18	n/a	£3,926	£47,112	Under Offer
Ground	618	£57.50	£18	n/a	£3,888.25	£46,659	Under Offer
Lower Ground	555	£57.50	£18	n/a	£3,491.88	£41,902.50	Under Offer
Total	2,843	£57.50	£18		£17,887.22	£214,646.50	

Compton

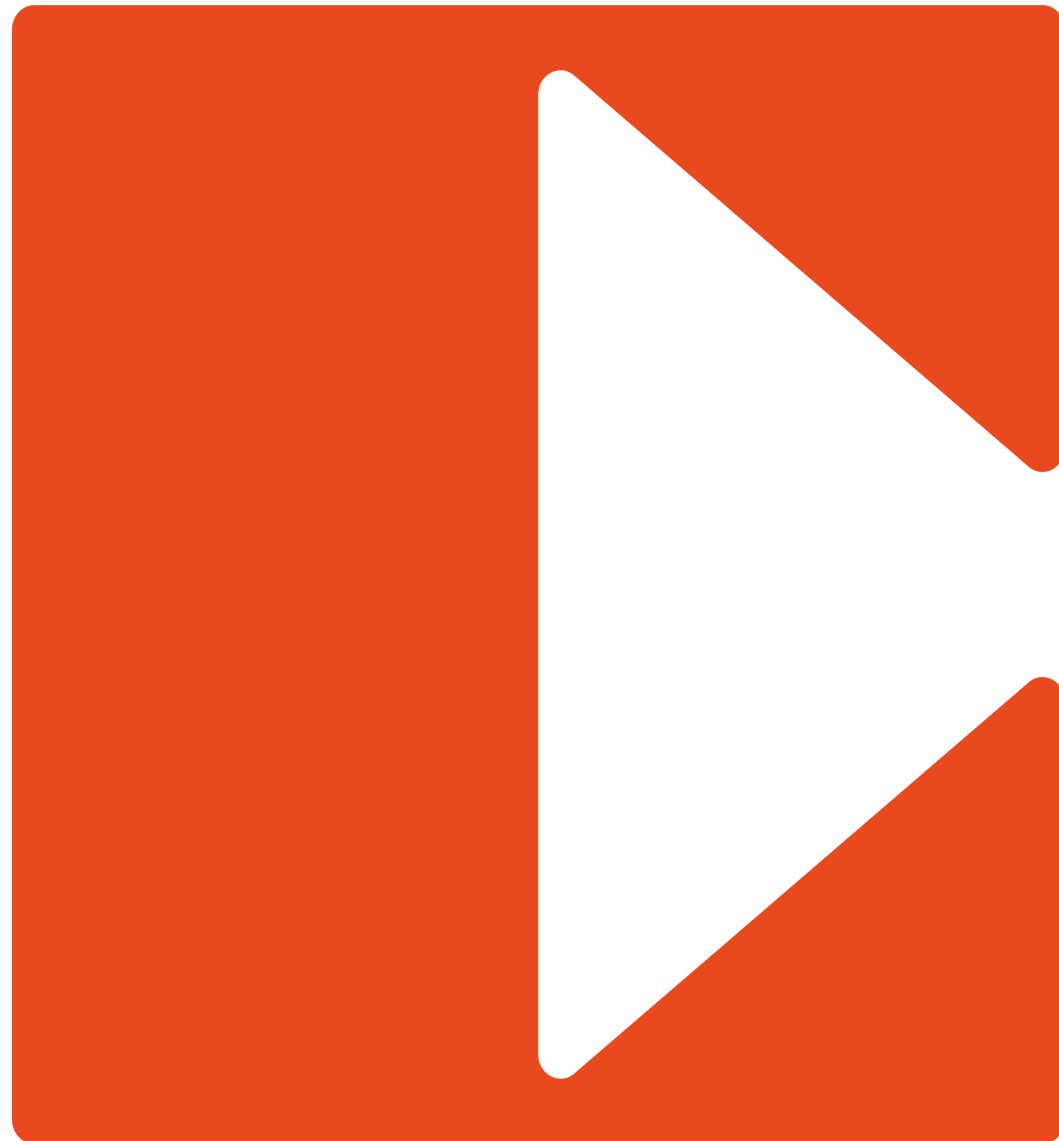
Contact Us

All appointments to view must be arranged via sole agents, Compton, through —

Joshua Miller
jm@compton.london
07917 725 365

Josh Perlmutter
jp@compton.london
07814 699 096

Shaun Simons
ss@compton.london
07788 423131



020 7101 2020
compton.london

Compton gives notice that these particulars are set out as a general outline only for the guidance of intending Purchasers or Lessees and do not constitute any part of an offer or contract. Details are given without any responsibility and any intending Purchasers, Lessees or Third Party should not rely on them as statements or representations of fact, but must satisfy themselves by inspection or otherwise as to the correctness of each of them. No person employed or engaged by Compton has any authority to make any representation or warranty whatsoever in relation to this property. Compton is the licensed trading name of Compton RE Disposals Limited. Company registered in England & Wales no. Registered office: 47 St John's Square, Clerkenwell, London, EC1V 4JJ
Generated on 12/07/2024