





Provident House Whitehough

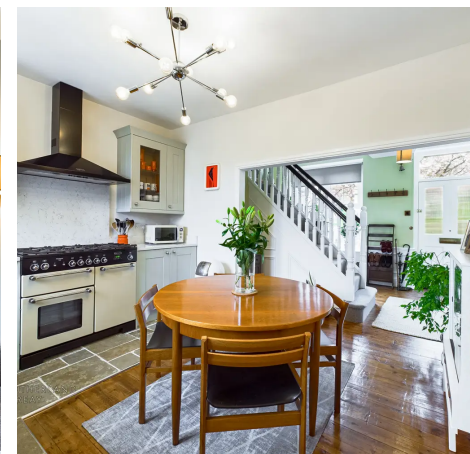
Chinley, High Peak

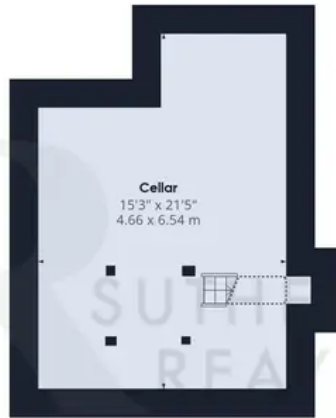
Provident House: Charming 3-bed detached property in Whitehough, Chinley. Built in 1880 with historical character as a former co-op and store. Features 2 receptions, bathroom, WC, flagstone garden, carport, and hillside views. Blend of heritage and modern comfort, conveniently located near amenities. EPC rating D, tax band D.

Council Tax band: D

Tenure: Freehold

- Detached Freehold
- Excellent Location
- Convenient Transport Links
- Three Double Bedrooms & Additional Loft Space
- Bathroom & WC
- Two Receptions
- Tax Band D
- EPC Rating D





Floor -1



Floor 0



Floor 1



Floor 2

Approximate total area⁽¹⁾

1857.47 ft²


172.56 m²

Reduced headroom

273.86 ft²

25.44 m²

(1) Excluding balconies and terraces

 Reduced headroom
(below 1.5m/4.92ft)

While every attempt has been made to ensure accuracy, all measurements are approximate, not to scale. This floor plan is for illustrative purposes only.

GIRAFFE360

AWARD WINNING ESTATE
& LETTING AGENTS

SCAN THE QR CODE
FOR MORE DETAILS
OR BOOK A VIEWING

