





Orchard Barn Moss Lane

Mobberley

A charming, detached barn conversion situated in a wonderful position on the edge of Mobberley Village in a private and tranquil setting, in grounds and paddock of about 1.6 acres or thereabouts in all.

Council Tax band: F

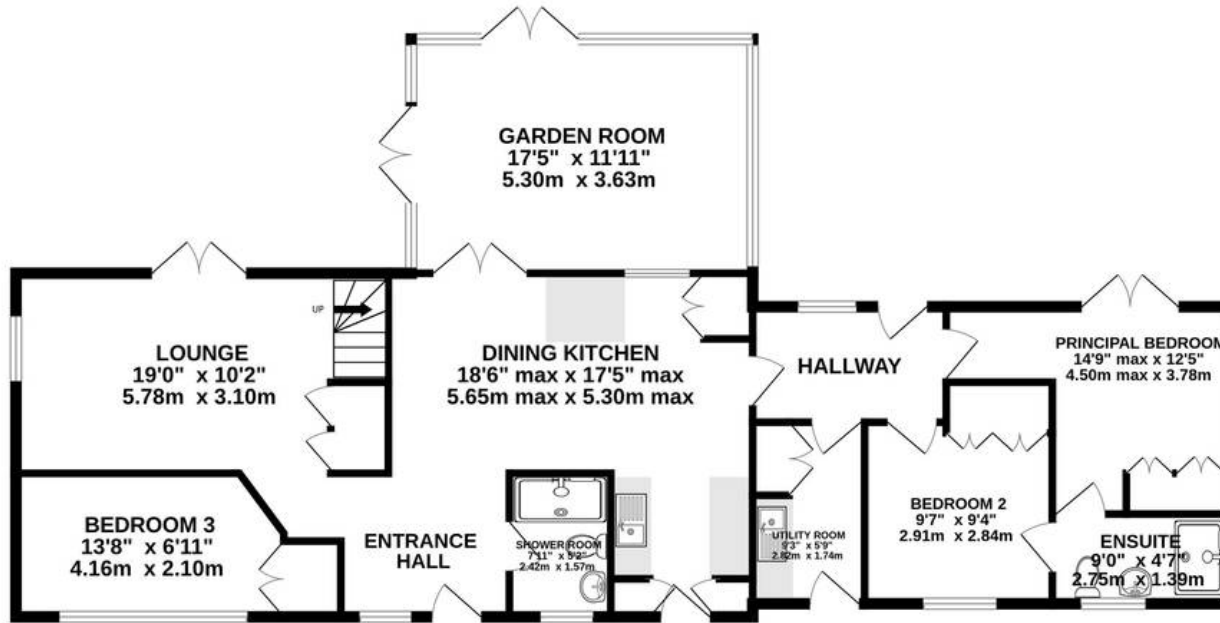
Tenure: Freehold

EPC Energy Efficiency Rating: E

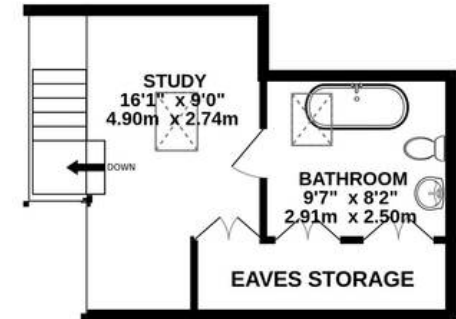
- Lovely barn conversion in pretty rural location close to the village
- Adjoining 1 acre paddock
- Useful timber outbuildings/stable block
- Pretty gardens with nature pond
- Quality accommodation including excellent timber framed garden room with views over the garden



GROUND FLOOR
1230 sq.ft. (114.3 sq.m.) approx.



1ST FLOOR
285 sq.ft. (26.5 sq.m.) approx.



TOTAL FLOOR AREA : 1515 sq.ft. (140.8 sq.m.) approx.

Whilst every attempt has been made to ensure the accuracy of the floorplan contained here, measurements of doors, windows, rooms and any other items are approximate and no responsibility is taken for any error, omission or mis-statement. This plan is for illustrative purposes only and should be used as such by any prospective purchaser. The services, systems and appliances shown have not been tested and no guarantee as to their operability or efficiency can be given.

Made with Metropix ©2024



Stuart Rushton & Company

Stuart Rushton & Co, 35 King Street – WA16 6DW

01565 757000

enquiries@srushton.co.uk

www.srushton.co.uk



We are not authorised to make or give any representations or warranties in relation to the property either here or elsewhere. We assume no responsibility for any statement that may be made in these particulars, and they do not form part of any offer or contract and must not be relied upon as statements or representation of fact. Any areas, measurements or distances are approximate. The text, photographs and plans are for guidance only. Importantly, it should not be assumed that the property has all necessary planning, building regulations or other consents and we have not tested any services, equipment or facilities. Purchasers must satisfy themselves by inspection or otherwise.