

FINDING YOU A HOME SINCE 1972
B



31 Le Clos Paumelle, Bagatelle Road
£995,000

BROADLANDS

FINDING YOU A HOME SINCE 1972

31 Le Clos Paumelle

Bagatelle Road, Jersey

- Fantastic bungalow on a quiet private close
- Three double bedrooms with scope to extend if needed
- On the market for the first time in over 50 years
- Popular location close to schools, shops and on a good bus route
- Views over the fields and valley to the rear
- Ample parking on the large private driveway and single garage
- Sole agent
- Contact James on 07829835076 or james@broadlandsjersey.com
- Contact Doug on 07700702585 or doug@broadlandsjersey.com



31 Le Clos Paumelle

Bagatelle Road, Jersey

Nestled within a quiet private close, this exceptional 3-bedroom bungalow presents a rare opportunity to acquire a sought-after property, now on the market for the first time in over five decades. Boasting three double bedrooms with ample potential for extension, this delightful home offers comfortable living spaces while enjoying picturesque views over the fields and valley to the rear. Situated in a popular location the new owner will benefit from easy access to local schools, shops, and on a good bus route. Furthermore, the property features a large private driveway as well as a single garage.





Living

As you enter the lounge you are immediately drawn to the view at the rear over the garden and field beyond. Large open sitting area with multi fuel burner and bespoke office set up in the corner. Sliding doors to the conservatory, another lovely sitting area and also dining space. Doors from both lead to the fully integrated bespoke kitchen.

Sleeping

Off the hallway are 3 good sized double bedrooms, all with built in wardrobe space. The principle benefitting from views at the back. Newly fitted shower room and a separate cloakroom complete the interior space.

Outside

Beautiful manicured garden at the rear with plenty of space for summer house and storage shed. Large private driveway with plenty of parking. Single garage with electric door.

Services

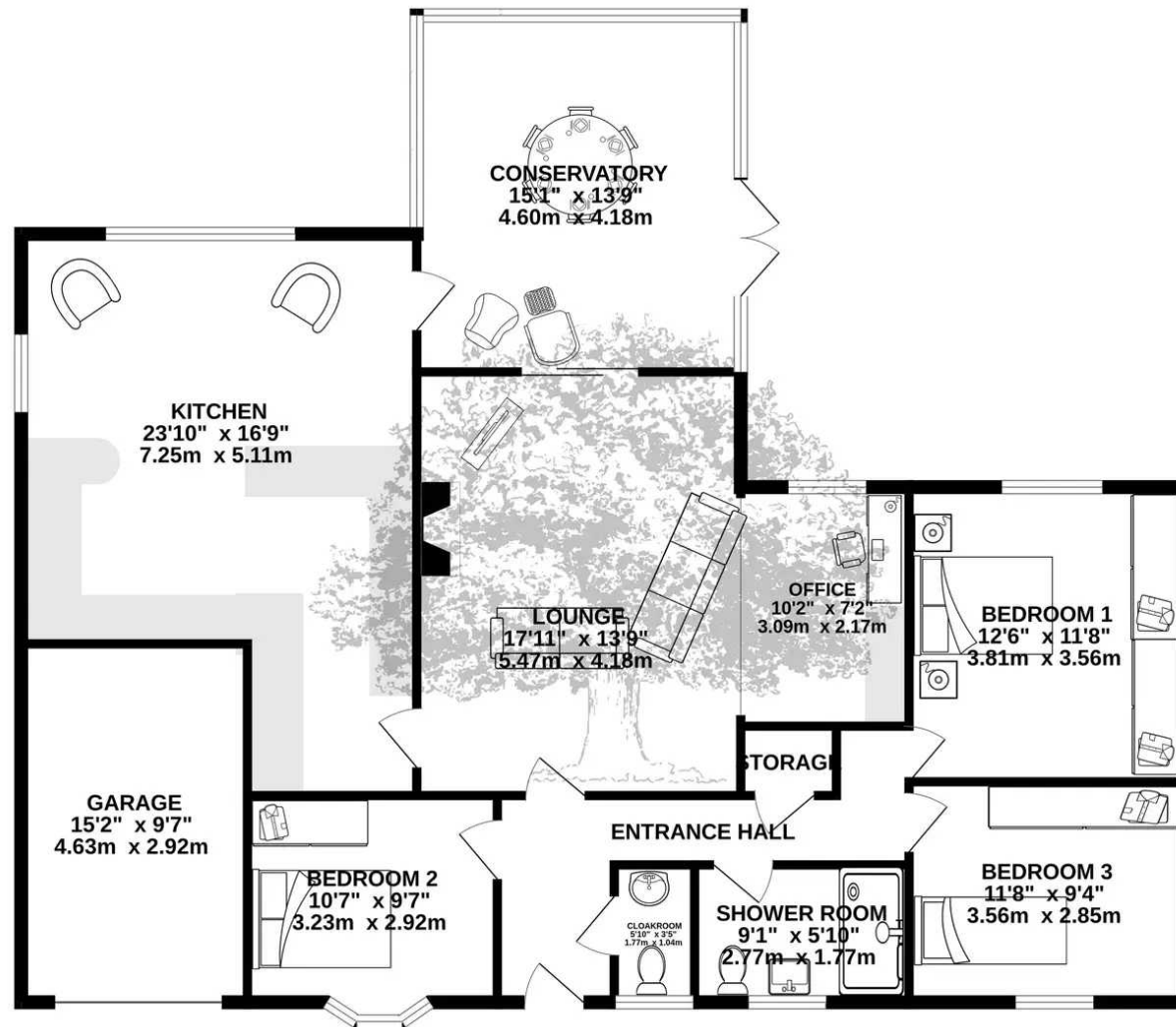
All mains services, no gas. Modern electric heating. Fully double glazed.







GROUND FLOOR
1527 sq.ft. (141.8 sq.m.) approx.



TOTAL FLOOR AREA: 1527 sq.ft. (141.8 sq.m.) approx.

Whilst every attempt has been made to ensure the accuracy of the floorplan contained here, measurements of doors, windows, rooms and any other items are approximate and no responsibility is taken for any error, omission or mis-statement. This plan is for illustrative purposes only and should be used as such by any prospective purchaser. The services, systems and appliances shown have not been tested and no guarantee as to their operability or efficiency can be given.
Made with Metropix ©2024



Broadlands

Broadlands Estates, Library Place - JE2 3NL

01534 880770 • enquiries@broadlandsjersey.com • www.broadlandsjersey.com/

BROADLANDS

FINDING YOU A HOME SINCE 1972