



14 Whitelaw Drive, Bathgate

Offers Over £113,500



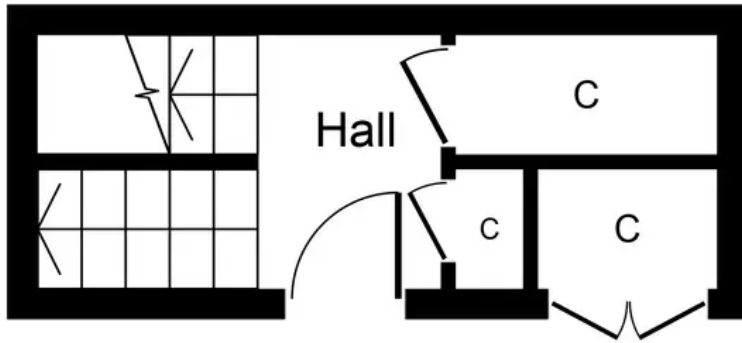
14 Whitelaw Drive

Bathgate, Bathgate

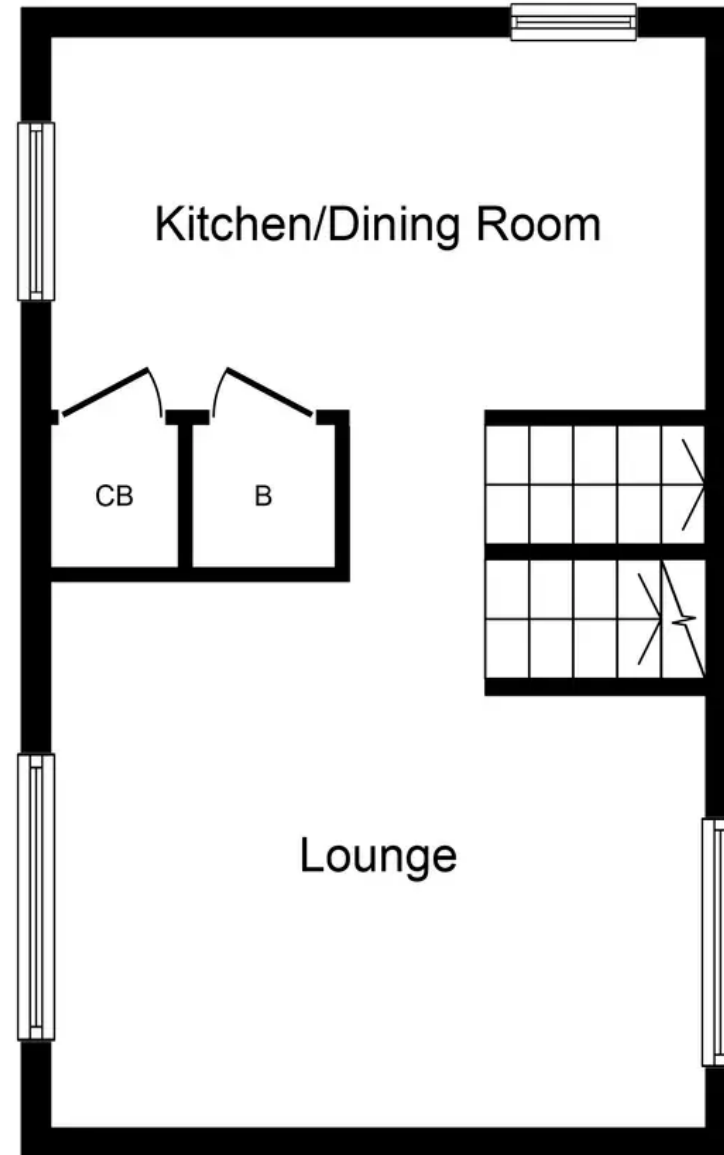
Charming 2-bed end terrace with modern kitchen, 2 double bedrooms, and contemporary bathroom. Stunning south-facing views, gas heating, on-street parking, and easy commuter access. Stylish decor, ready to move in. Outdoor space. Ideal for comfort and style.

- Two Double Bedroom End Terraced House
- Modern Fitted Kitchen with Dining area
- Stylish contemporary designed Bathroom suite
- Lovely south-facing views from Lounge towards Pentland Hills
- Unrestricted on-street parking
- Gas Central Heating with recently upgraded combi Boiler
- Excellent commuter links via Railway and Road within close proximity
- Property in walk in condition tasteful decor and flooring throughout





Ground Floor
Approximate Floor Area
83 sq.ft.
(7.7 sq.m.)



First Floor
Approximate Floor Area
344 sq.ft.
(32.0 sq.m.)

Whilst every attempt has been made to ensure the accuracy of the floor plan contained here, measurements of doors, windows, rooms and any other items are approximate and no responsibility is taken for any error, omission, or mis-statement. The measurements should not be relied upon for valuation, transaction and/or funding purposes. This plan is for illustrative purposes only and should be used as such by any prospective purchaser or tenant.

The services, systems and appliances shown have not been tested and no guarantee as to their operability or efficiency can be given.



KnightBain Estate Agents

Knightbain, 4 Greendykes Road, Broxburn - EH52 5AG

01506 852000

info@knightbain.co.uk

www.knightbain.co.uk/

