





5 Haywain Close

Torquay, Torquay

Nestled in a sought-after residential area, this 4-bedroom bungalow offers a superb living space and is situated within close proximity to Torbay Hospital and local nursery, primary and Grammar schools, this property presents an ideal setting for families seeking a balanced lifestyle.

The property immediately impresses with its spacious sitting room that flows seamlessly into a delightful conservatory, providing a light-filled space for relaxation and entertainment. The modern fitted kitchen/breakfast room is a chef's dream, complete with integrated appliances and complemented by a separate dining room, perfect for hosting gatherings with friends and family.

The accommodation boasts four generously sized double bedrooms, ensuring ample privacy and comfort for all residents. A four-piece bathroom and a separate cloakroom/WC and study offer convenience and functionality, catering to the needs of modern living.



Outside, the property features ample driveway parking and a single garage, ensuring that convenience is a top priority. The enclosed rear gardens provide a private outdoor space, perfect for enjoying the fresh air and nature. Additionally, the open views from the rear elevation add a touch of tranquillity to the property, creating a serene environment for relaxation.

Conveniently located with easy access to the local bypass, nearby shops and schools, residents will find commuting and daily errands to be effortless and stress-free. The property's proximity to local amenities further enhances its appeal, making it an attractive choice for those seeking a convenient and connected lifestyle.

Overall, this charming bungalow offers a blend of modern living spaces, convenient amenities, and tranquil surroundings, making it a truly desirable property in a prime location. With its thoughtful design and practical features, this home presents a rare opportunity for discerning buyers looking to embrace a comfortable and sophisticated lifestyle.

Rear Garden

Access to the rear garden is from both sides of the property. The gardens has been laid to a combination of patio, level lawned area and stone chippings with flower beds bordering planted with a variety of shrubs and flowering plants. There is also a useful storage shed, outside light and 2 taps. The rear garden is enclosed by timber fencing.



5 Haywain Close

Torquay, Torquay

Driveway

Parking for at least 4 vehicles- To the front of the property there is ample driveway parking which extends to the side and leads to the garage.

Garage

Single Garage - The single garage with up and over door, light and power is accessed via the driveway.

Haywain Close occupies a sought after residential position within a short distance away from excellent local amenities, including the ever popular Wren Retail Park and The Willows, which both offer an enviable array of supermarkets, home furnishing stores and more. Also close by, is Torbay hospital and both Boys and Girls Grammar Schools, perfectly suited for families. A short drive away, you can find a picturesque selection of local beaches including Babbacombe, Oddicombe and Meadfoot beach, with an array of water sports and fishing also available. Torquay seafront, deep water marina and lively town centre are within great reach too, which is enhanced by a brilliant selection of restaurants and cafes, independent shops and further amenities.

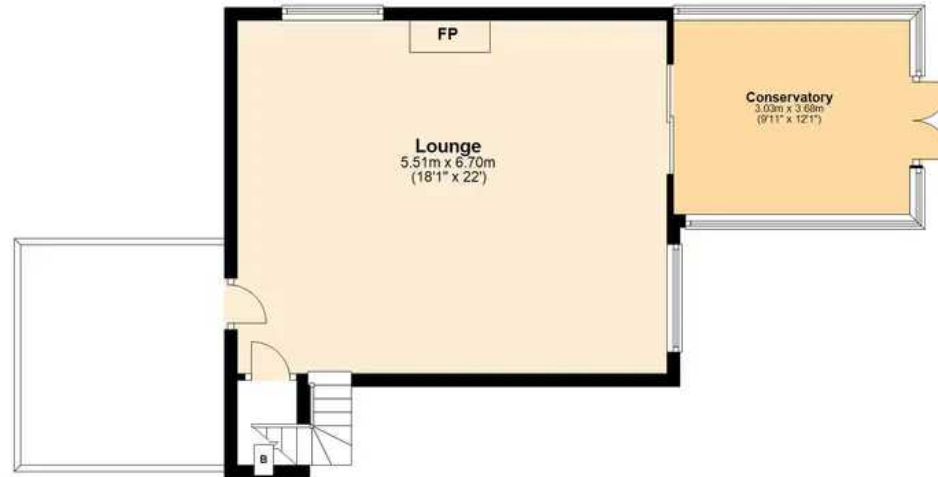




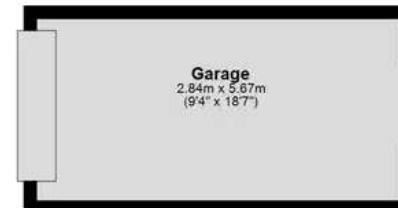
ABSOLUTE



Garden Floor



Ground Floor



Total area: approx. 161.6 sq. metres (1739.4 sq. feet)

Approx
Plan produced using PlanUp.





Absolute Sales & Lettings

Absolute Sales & Lettings Ltd, 13 Ilsham Road - TQ1 2JG

01803 214214

torquay@movewithabsolute.co.uk

movewithabsolute.co.uk/

