

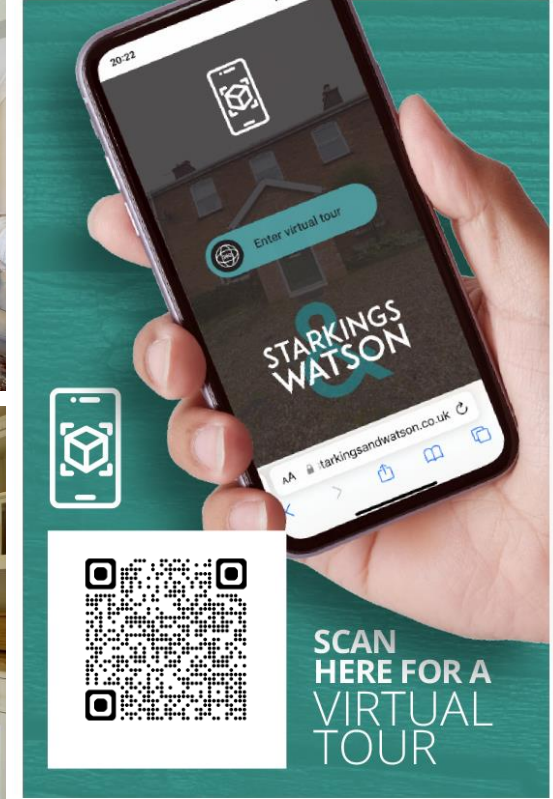
MILL CLOSE

Salhouse, Norwich NR13 6QB

Freehold | Energy Efficiency Rating : D

To arrange an accompanied viewing please pop in or call us on 01603 336556

FOR SALE PROPERTY



arla | propertymark
PROTECTED

naea | propertymark
PROTECTED

The Property
Ombudsman

For our full list of available properties, or
for a FREE INSTANT online valuation visit

starkingsandwatson.co.uk

BEST
ESTATE AGENT GUIDE
AWARDS 2023
WINNER
(HONOURS)
AWARDED FOR
MARKETING | SERVICE | RESULTS

BEST
ESTATE AGENT GUIDE
AWARDS 2023
WINNER
LETTINGS
AWARDED FOR
MARKETING | SERVICE | RESULTS

STARKINGS & WATSON

- Detached Chalet Style Home
- Approx. 0.17 Acre Plot (stms)
- Driveway, Garage & Gated Entrance
- Over 1300 Sq. ft (stms)
- Kitchen/Breakfast Room with Island
- 31' Sitting/Dining Room
- Four Bedrooms
- Private Gardens with Leafy Outlook

IN SUMMARY

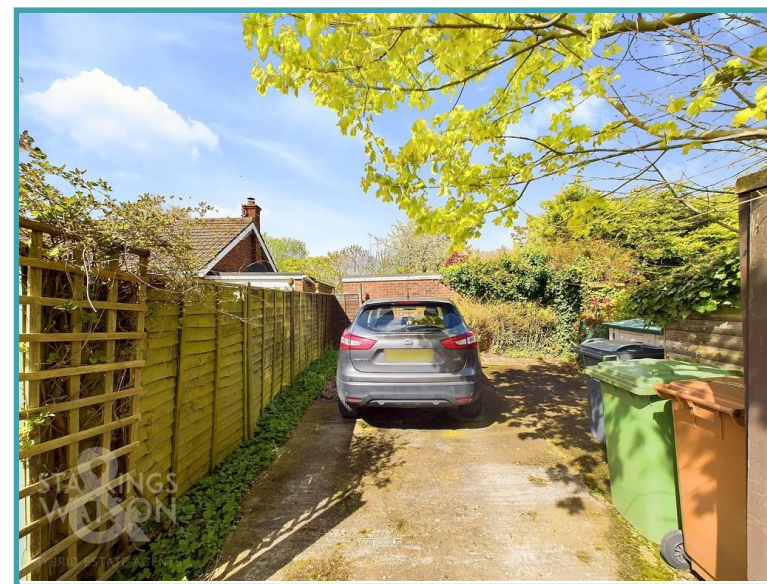
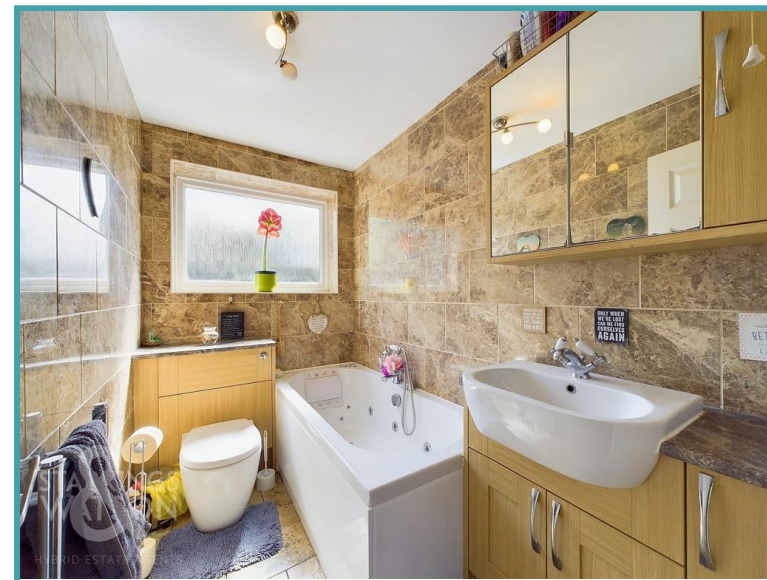
NO CHAIN. This DECEPTIVELY SPACIOUS detached CHALET style home occupies a CORNER PLOT in the heart of SALHOUSE - close to the NORFOLK BROADS, Wroxham and with easy access to the NDR whilst enjoying COUNTRYSIDE SURROUNDINGS. Ready for a new buyer to ADD THEIR OWN STYLE and re-imagine the space to suit, the property offers solid foundations and spacious rooms, with over 1300 Sq. ft (stms) of accommodation. The PARKING is located to the rear along with a GARAGE and a secondary driveway with double gates, meaning the UTILITY ROOM is used as a BOOT ROOM, leading into the 17' KITCHEN/BREAKFAST ROOM with its CENTRAL ISLAND, whilst DOUBLE DOORS open to the 31' SITTING/DINING ROOM which offers VIEWS to front and REAR, with a GROUND FLOOR BEDROOM/STUDY and family bathroom. Upstairs, THREE DOUBLE BEDROOMS lead off the landing, with the rear bedroom including extensive EAVES STORAGE, with a further SHOWER ROOM. The GARDEN is a great size, with a GREEN and LEAFY SETTING, and ample space for a family.

SETTING THE SCENE

From the front, gated access leads to an enclosed lawned front garden with a patio area - remaining private and usable like the rear, the garden is a good size, with access to the main property and gated rear garden.

THE GRAND TOUR

Heading inside, wood effect flooring leads through the hall entrance, with the stairs leading up opposite. Useful storage can be found under the stairs, whilst doors lead to all the main ground floor rooms. To your right the sitting/dining room can be found, boasting its dual aspect via a front facing window and patio doors to rear, with its feature fire place (including back boiler) and distinct separation in two sections for entertaining and dining. Double doors lead to the kitchen/breakfast room, centred on a main island and breakfast bar, with a range of modern wall and base level units, topped with wood effect work surfaces. Space is provided for a Range style cooker, whilst the country style finish includes glazed display units and a plate rack. There is space for a fridge freezer, whilst the utility/boot room includes room for a fridge and washing machine. Heading back into the hall, wood effect flooring runs in the bedroom/study, with views to front, and a useful family bathroom adjacent with built-in storage and fully tiled walls. Upstairs, the landing is carpeted, and leads to all three double bedrooms. Two face to the front with one including a range of built-in wardrobes, whilst the rear bedroom includes built-in



To arrange an accompanied viewing please call our Brundall Office on **01603 336556**



wardrobes and extensive eaves storage. The shower room also leads off, with tiled walls and a rainfall shower.

THE GREAT OUTDOORS

The rear garden is an extremely flexible space, with mature planting and a central lawn. Enclosed with timber panelled fencing, a patio extends from the utility room, with low level hedging enclosing a shingled area which also has access via double vehicular gates to side. With various shrubbery and hedging, the garden continues, where the driveway can be found, along with the garage with electrics - which due to its positioning is for storage only.

OUT & ABOUT

Salhouse is situated East of Norwich, set between Rackheath and Blofield. Local amenities include a primary school, village and post office. The City of Norwich offers a wide range of shopping, leisure and cultural facilities as well as a main line railway station serving London Liverpool Street and an international airport. Villages within close proximity include Brundall and Acle which both offer further amenities including doctors and pharmacists, whilst benefiting from excellent transport links both by road and rail.

FIND US

Postcode : NR13 6QB

What3Words : ///cabbies.stiletto.branch

VIRTUAL TOUR

View our virtual tour for a full 360 degree of the interior of the property.

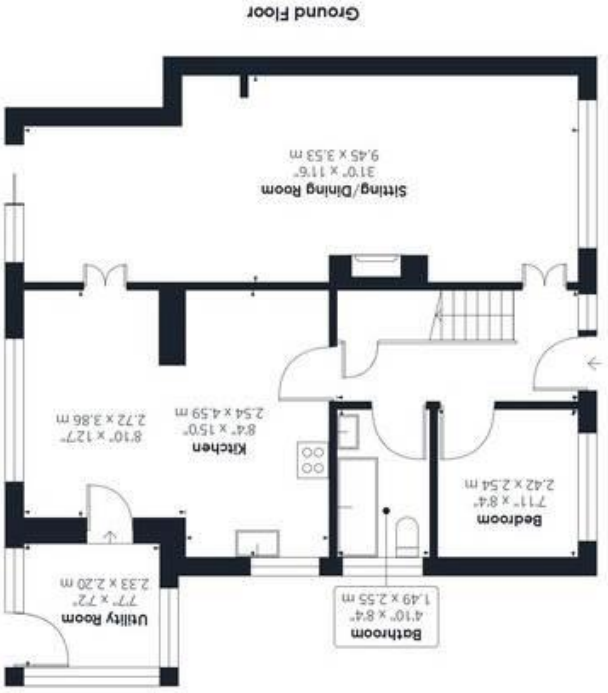
Disclaimer: Whilst every care has been taken to prepare these sales particulars, they are for guidance purposes only. All measurements are approximate are for general guidance purposes only and whilst every care has been taken to ensure their accuracy, they should not be relied upon and potential buyers are advised to recheck the measurements.

Price:



For our full list of available properties, or for a FREE INSTANT online valuation visit

starkingsandwatson.co.uk



Ground Floor



Floor 1

While every attempt has been made to ensure accuracy, all measurements are approximate, not to scale. This floor plan is for illustrative purposes only.

Reduced bedroom (below 1.5m/4.92ft)

(1) Excluding balconies and terraces

Approximate total area^m
 1314.71 ft²
 122.14 m²
 Reduced bedroom
 14.46 ft²
 1.34 m²

