





Letterbox Barn, Georges Lane

Aston By Budworth

A very attractive detached period barn with excellent, well designed planning permission to convert into a lovely family house of nearly 2270 square feet, including the attached garage.

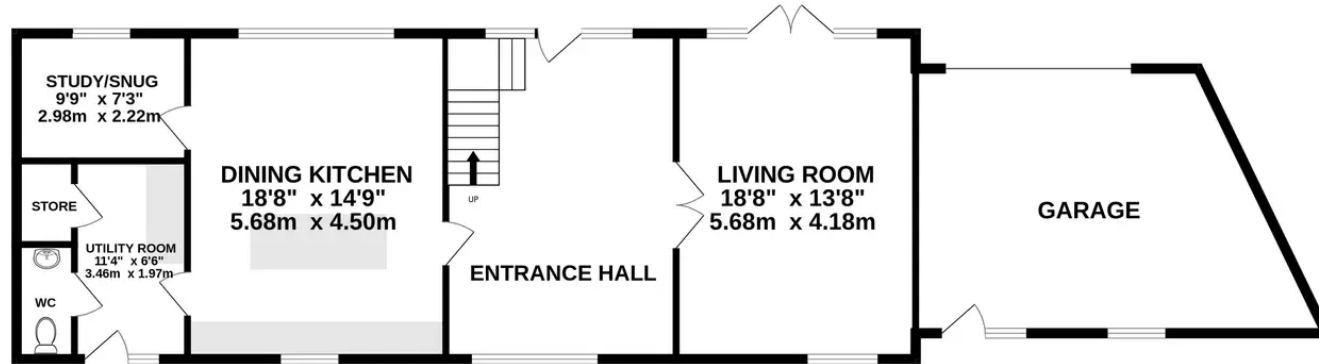
Once part of the Arley Estate, situated in a pretty, rural location close to Great Budworth village and with its own private gardens and grounds, the barn has mellowed brick elevations and some lovely original internal timberwork and trusses.

Tenure: Freehold

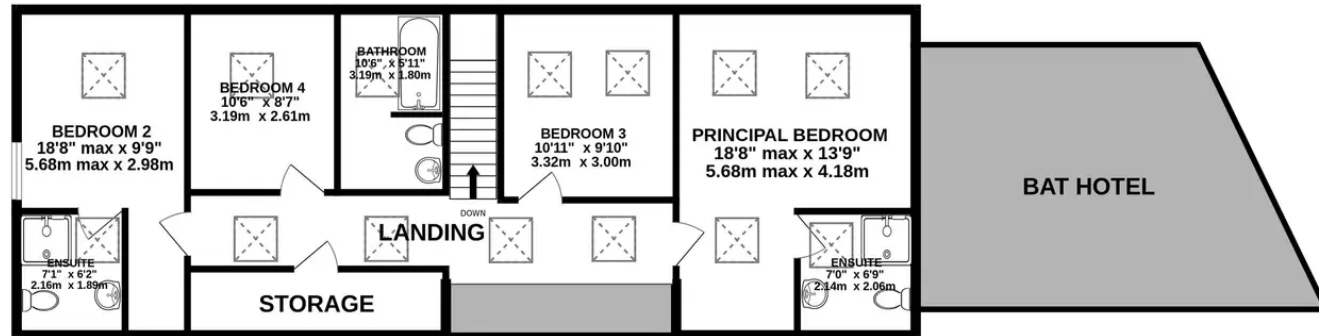
- Detached barn with full planning permission for a four bedroom home
- Lovely rural location near Great Budworth village
- Nearly 2270 square feet in all, with good sized driveway and garage
- Some lovely internal beams and trusses
- Superb open views



GROUND FLOOR
1259 sq.ft. (116.9 sq.m.) approx.

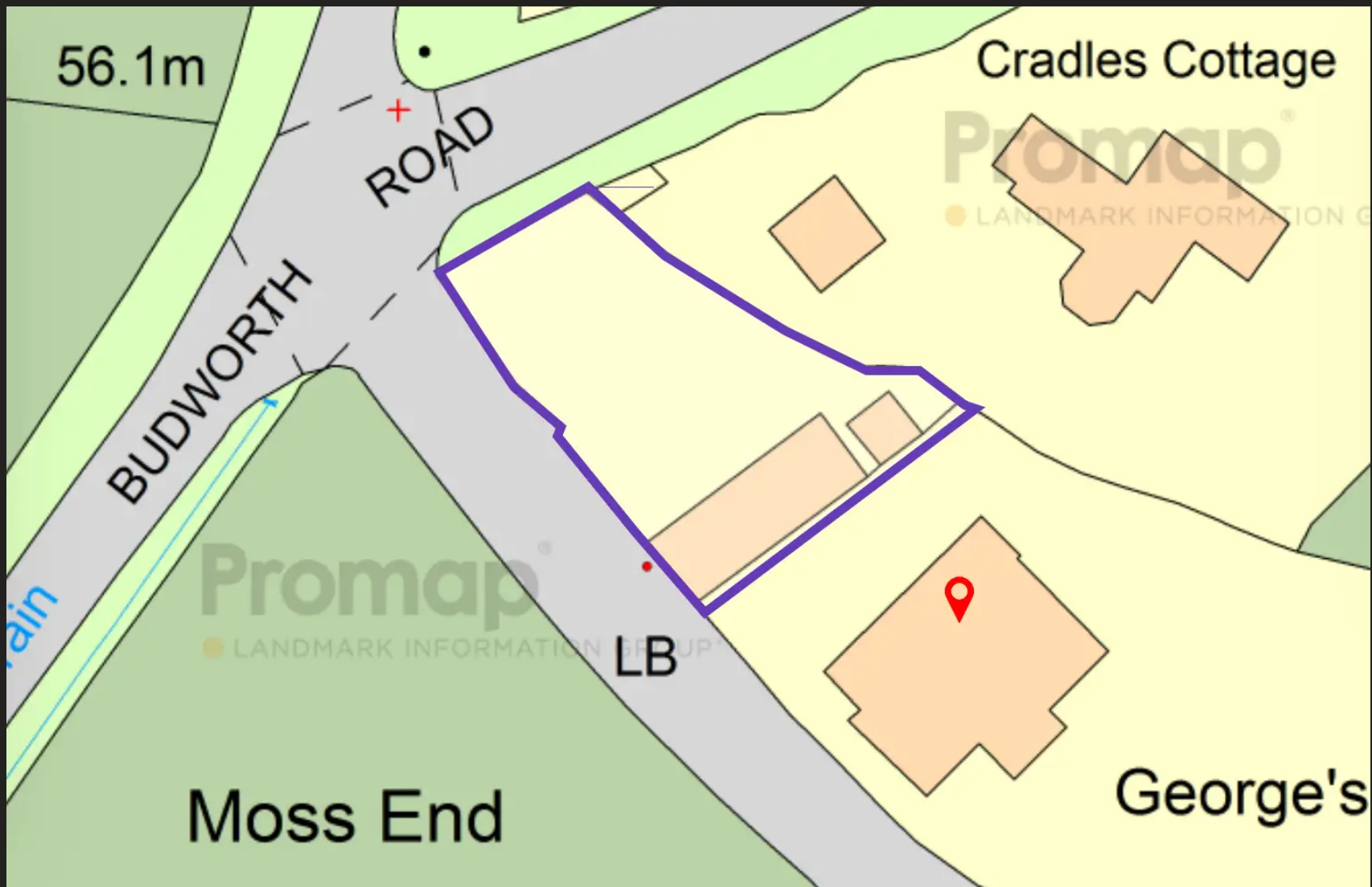


1ST FLOOR
919 sq.ft. (85.4 sq.m.) approx.



TOTAL FLOOR AREA : 2178 sq.ft. (202.3 sq.m.) approx.

Whilst every attempt has been made to ensure the accuracy of the floorplan contained here, measurements of doors, windows, rooms and any other items are approximate and no responsibility is taken for any error, omission or mis-statement. This plan is for illustrative purposes only and should be used as such by any prospective purchaser. The services, systems and appliances shown have not been tested and no guarantee as to their operability or efficiency can be given.



Stuart Rushton & Company

Stuart Rushton & Co, 35 King Street - WA16 6DW

01565 757000

enquiries@srushton.co.uk

www.srushton.co.uk



We are not authorised to make or give any representations or warranties in relation to the property either here or elsewhere. We assume no responsibility for any statement that may be made in these particulars, and they do not form part of any offer or contract and must not be relied upon as statements or representation of fact. Any areas, measurements or distances are approximate. The text, photographs and plans are for guidance only. Importantly, it should not be assumed that the property has all necessary planning, building regulations or other consents and we have not tested any services, equipment or facilities. Purchasers must satisfy themselves by inspection or otherwise.