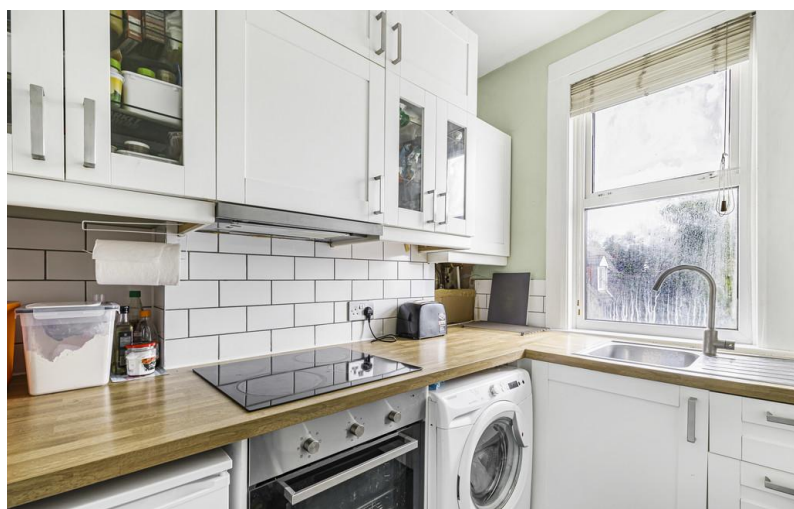


**FOR SALE**



**St Peter's Road, Croydon**

**2 Bedrooms, 1 Bathroom, Flat with Garden**

**Asking Price Of £265,000**

**MARTIN&CO**



## St Peter's Road, Croydon

Asking Price Of £265,000

- Lovely 2 Bedroom Flat
- Light/Bright Rooms
- Built in Wardrobes in Master Bedroom
- Long Lease
- No Chain
- Low Service Charge
- Private Garden

Between East and South Croydon stations this well presented 2 bedroom first floor conversion flat is perfect for the FIRST TIME BUYER OR INVESTOR. The property affords an entrance hall, large reception room with plenty of space for a dining table, separate modern fitted kitchen, two good bedrooms, a bathroom/w.c. benefits from gas fired central heating & PRIVATE GARDEN.

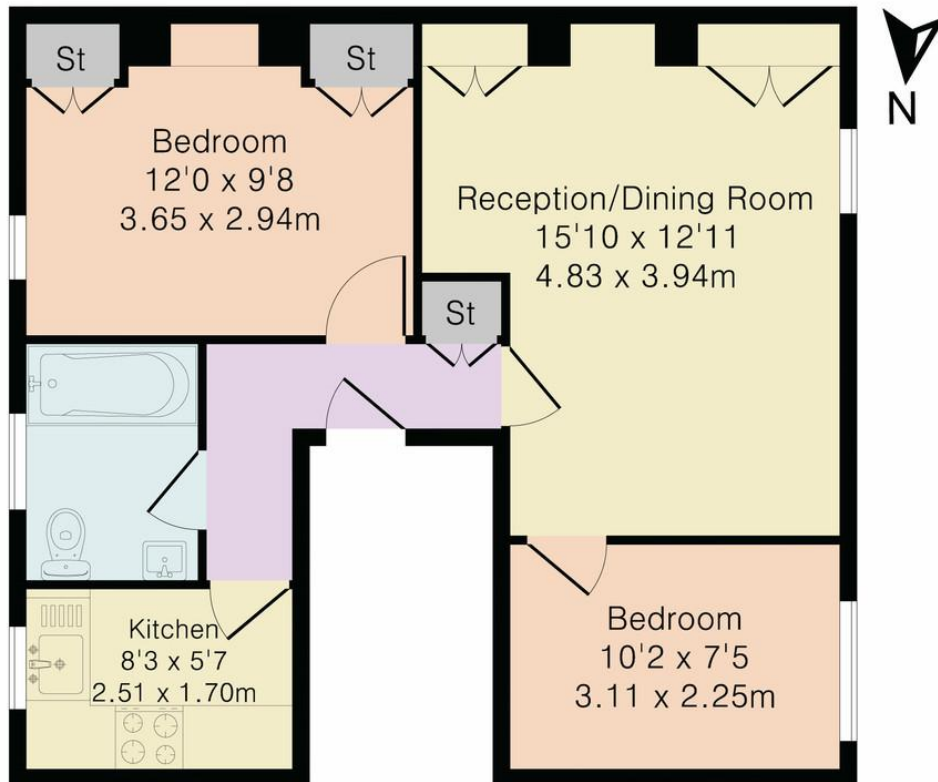
East Croydon station and the Town Centre are approximately 10 minutes walk away, whilst south Croydon station is just 5 minutes on foot. Call us now for an appointment to view!

Score	Energy rating	Current	Potential
92+	A		
81-91	B		
69-80	C	69 C	77 C
55-68	D		
39-54	E		
21-38	F		
1-20	G		





Approximate Gross Internal Area 510 sq ft – 47 sq m



First Floor



Although Pink Plan Ltd ensures the highest level of accuracy, measurements of doors, windows and rooms are approximate and no responsibility is taken for error, omission or misstatement. These plans are for representation purposes only as defined by RICS code of measuring practice. No guarantee is given on total square footage of the property within this plan. The figure icon is for initial guidance only and should not be relied on as a basis of valuation.



## Martin & Co Croydon

145 Brighton Road • South Croydon • CR2 6EF  
T: 0208 688 8565 • E: [croydon@martinco.com](mailto:croydon@martinco.com)

**0208 688 8565**  
<http://www.martinco.com>

**MARTIN&CO**

**Accuracy:** References to the Tenure of a Property are based on information supplied by the Seller. The Agent has not had sight of the title documents. A Buyer is advised to obtain verification from their Solicitor. Items shown in photographs including but not limited to carpets, fixtures and fittings are not included unless specifically mentioned within the sales particulars. They may however be available by separate negotiation. Buyers must check the availability of any property and make an appointment to view before embarking on any journey to see a property. No person in the employment of the agent has any authority to make any representation about the property, and accordingly any information given is entirely without responsibility on the part of the agents, sellers(s) or lessors(s). Any property particulars are not an offer or contract, nor for part of one. **Sonic / laser Tape:** Measurements taken using a sonic / laser tape measure may be subject to a small margin of error. **All Measurements:** All Measurements are Approximate. **Services Not tested:** The Agent has not tested any apparatus, equipment, fixtures and fittings or services and so cannot verify that they are in working order or fit for the purpose. A Buyer is advised to obtain verification from their Solicitor or Surveyor. **Mortgage & Financial Advice:** The Martin & Co mortgage service is provided by London & Country Mortgages the UK's largest Independent Fee-Free mortgage broker of Beazer House, Lower Bristol Road, Bath, BA2 3BA. Authorised and regulated by the Financial Conduct Authority. Their FCA number is 143002. **YOUR HOME IS AT RISK IF YOU DO NOT KEEP UP REPAYMENTS ON A MORTGAGE OR OTHER LOANS SECURED ON IT.** Full written quotation available on request. A suitable life policy may be required. Loans subject to status. Minimum age 18. If you are making a cash offer, we shall require written confirmation of the source and availability of your funds in order that our client may make an informed decision.

