



Salisbury Road, Eccles

Manchester



Offers Over £200,000

Salisbury Road

Eccles, Manchester

Fabulous end terrace property in Ellesmere Park with two double bedrooms, three reception rooms, off-road parking, sun-drenched garden. Ideal for healthcare professionals, close to hospital. A rare blend of comfort and functionality in a sought-after location.

Council Tax band: A

Tenure: Freehold

- Fabulous End Terrace Property Located in the Desirable Ellesmere Park Area
- Three Reception Rooms & Fitted Kitchen to the Ground Floor
- Two Generous Double Bedrooms with Built in Storage
- Timeless White Bathroom Suite
- Off Road Parking for Multiple Cars
- Sun Drenched Rear Garden with Decked Seating Area & Lawns
- Within Walking Distance to Salford Royal Hospital
- Close to Local Amenities & Transport Links



Entrance Hallway

Entered via a composite front door. Complete with a ceiling light point, double glazed window and wall mounted radiator. Storage under the stairs. Fitted with lino flooring.

Lounge

12' 2" x 11' 0" (3.71m x 3.35m)

Featuring an electric fire. Complete with a ceiling light point, double glazed window and wall mounted radiator. Fitted with carpet flooring.

Reception Room Two

9' 8" x 7' 7" (2.95m x 2.31m)

Complete with a ceiling light point, double glazed window and wall mounted radiator. Fitted with carpet flooring.

Dining Room

8' 4" x 7' 1" (2.54m x 2.16m)

Complete with a ceiling light point, double glazed window and wall mounted radiator. Storage under the stairs. Fitted with lino flooring. Boiler.

Landing

Complete with a double glazed window and carpet flooring. Loft access

Bedroom One

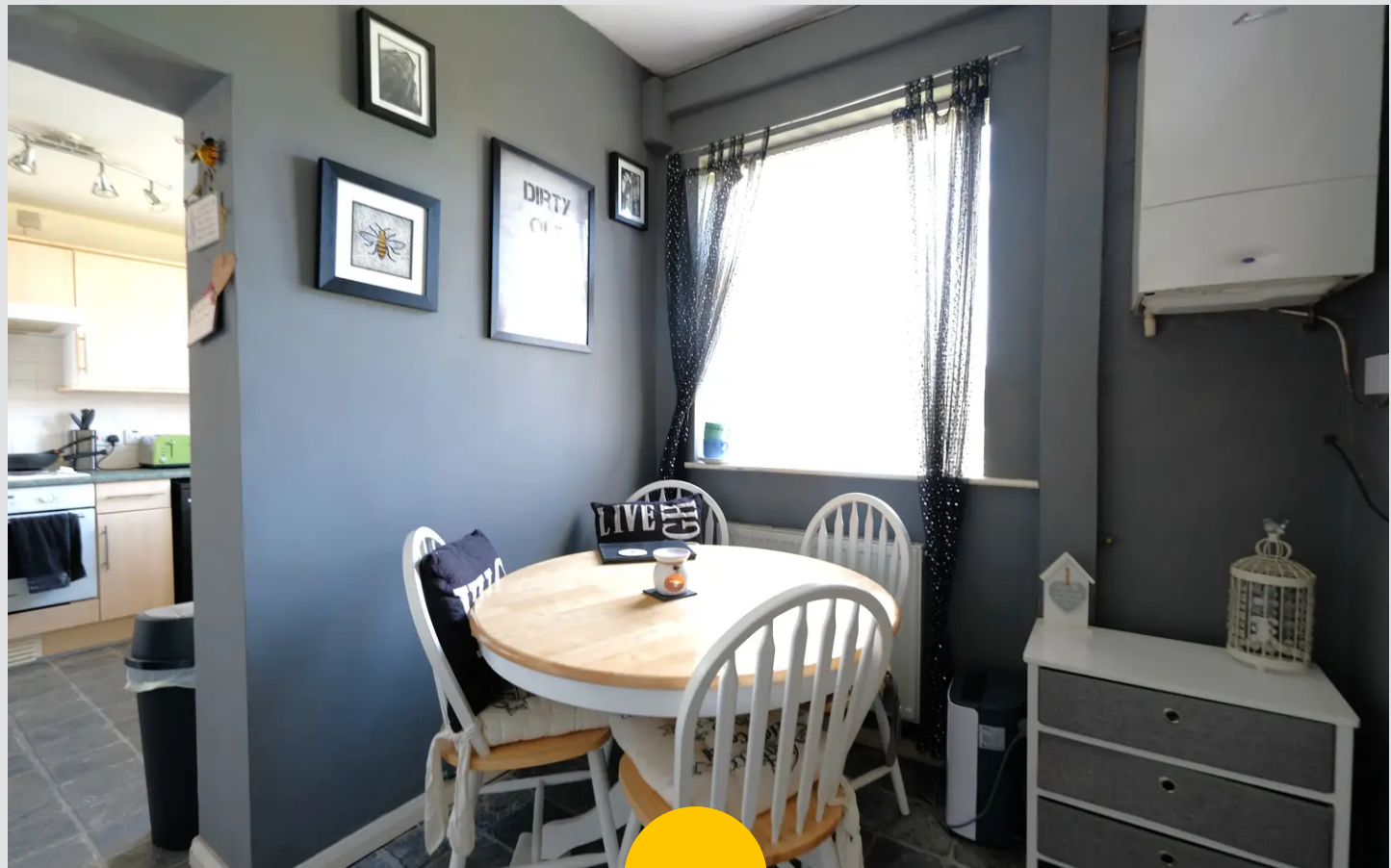
15' 2" x 8' 9" (4.62m x 2.67m)

Featuring fitted storage cupboard. Complete with a ceiling light point, double glazed window and wall mounted radiator. Fitted with carpet flooring.

Bedroom Two

10' 2" x 11' 5" (3.10m x 3.48m)

Featuring two fitted wardrobes and built in storage cupboard. Complete with a ceiling light point, double glazed window and wall mounted radiator. Fitted with carpet flooring.



Bathroom

6' 9" x 5' 5" (2.06m x 1.65m)

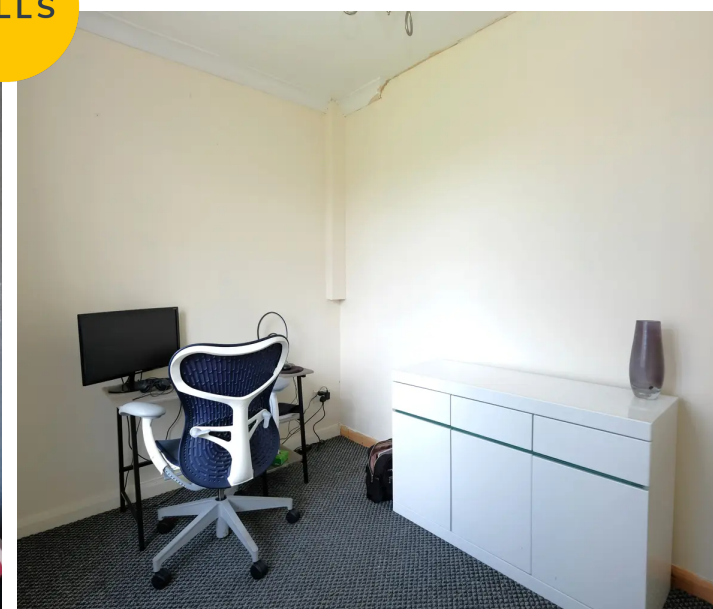
Featuring a three-piece suite including a bath with electric shower over, hand wash basin and W.C. Complete with a ceiling light point, double glazed window and wall mounted radiator. Fitted with part tiled walls and laminate flooring.

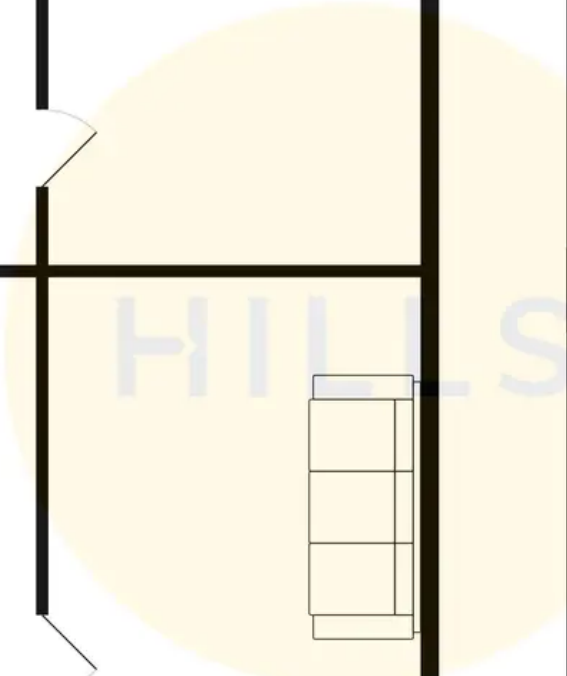
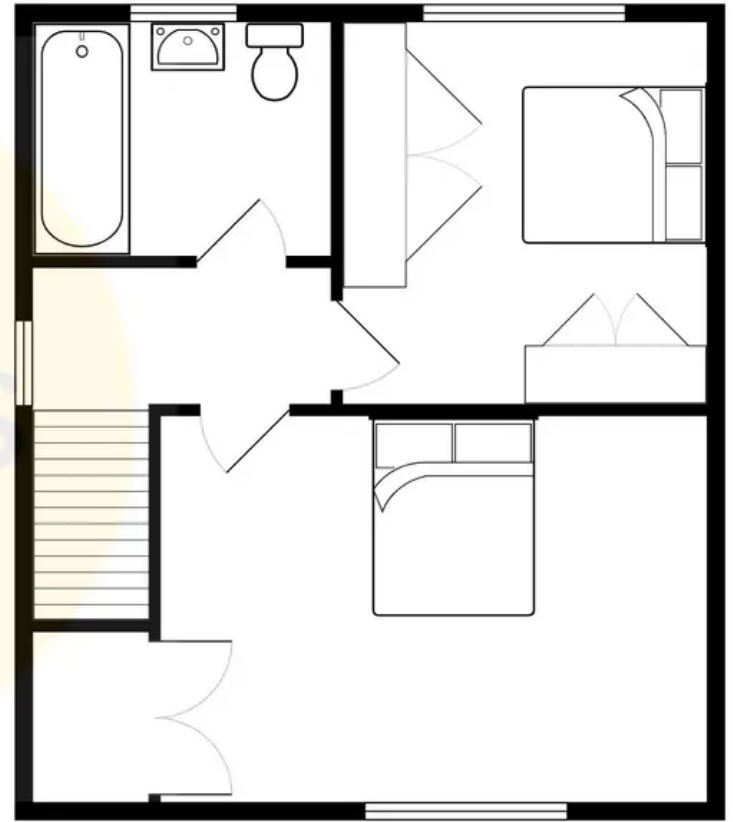
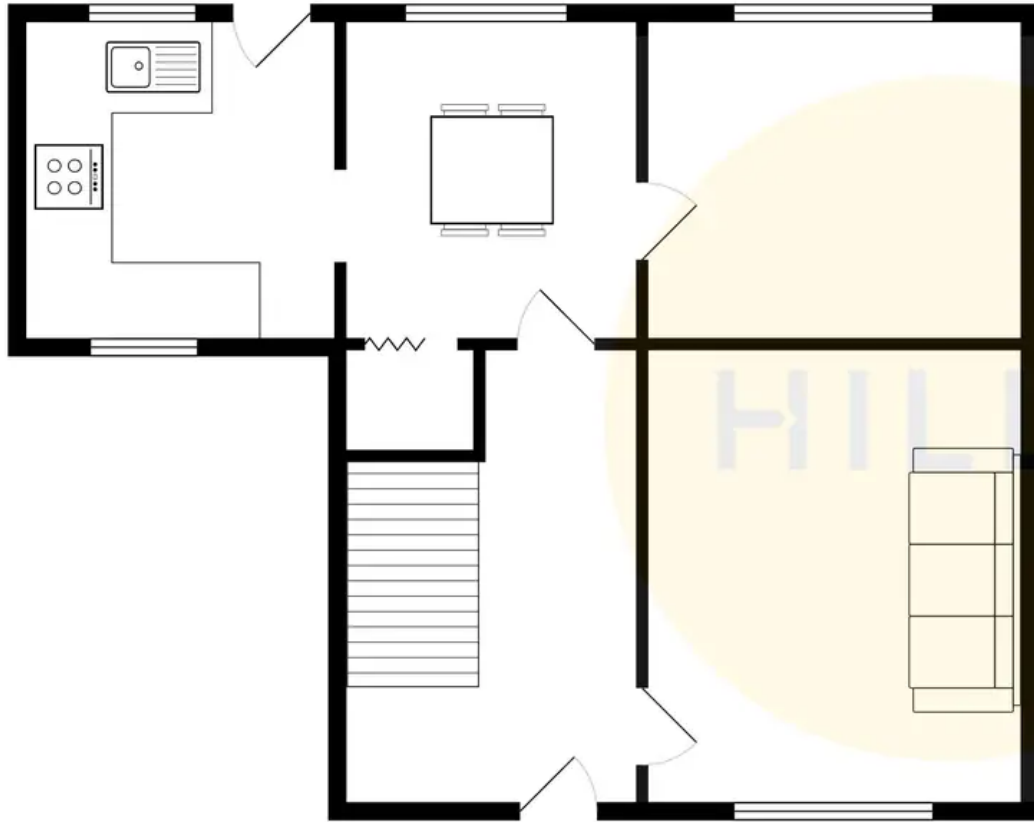
External

To the front of the property is paved off road parking for multiple cars. To the rear of the property is a garden with artificial lawn with paved path and composite shed.



HILLS







Hills | Salfords Estate Agent

Hills Residential, Sentinel House Albert Street – M30 0SS

0161 707 4900

sales@hills.agency

www.hills.agency/



THE PROPERTY MISDESCRIPTIONS ACT 1991 The Agent has not tested any apparatus, equipment, fixtures and fittings or services and so cannot verify that they are in working order or fit for the purpose. A Buyer is advised to obtain verification from their Solicitor or Surveyor. References to the Tenure of a Property are based on information supplied by the Seller. The Agent has not had sight of the title documents. A Buyer is advised to obtain verification from their Solicitor. You are advised to check the availability of this property before travelling any distance to view. Every effort and precaution has been made to ensure these particulars are correct and not misleading but their accuracy is not guaranteed nor do they form part of any contract. If there is any point which is of particular importance to you, please contact us and we will provide any information you require. This is advisable, particularly if you intend to travel some distance to view the property. The mention of any appliances and services within these details does not imply that they are in full and efficient working order. These particulars are in draft form awaiting Vendors confirmation of their accuracy. These details must therefore be taken as a guide only.