



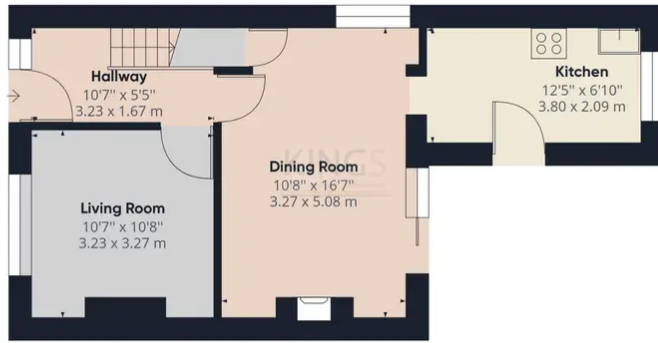
Radlett Road, Frogmore

£1,800 PCM

SEMI DETACHED HOUSE • THREE BEDROOMS • LIVING ROOM • DINING ROOM • MODERN KITCHEN • NEW FAMILY BATHROOM • RECENTLY REFURBISHED • UNFURNISHED • AVAILABLE ASAP • EPC RATING - D

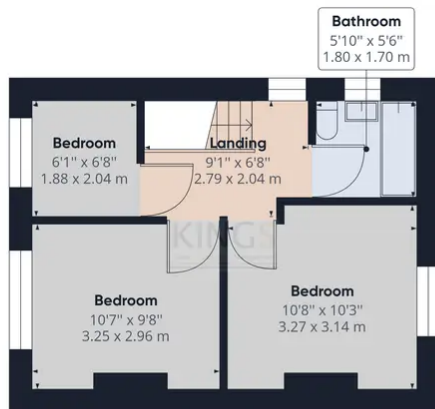
KINGS

Sales Lettings Management



Ground Floor

Approximate total area⁽¹⁾
771.16 ft²
71.64 m²



Floor 1

(1) Excluding balconies and terraces

While every attempt has been made to ensure accuracy, all measurements are approximate, not to scale. This floor plan is for illustrative purposes only.

GIRAFFE360

