



 JACKIE OLIVER & CO

**5 Whaddon Close, Northampton**

Offers in Region of **£425,000**



# 5 Whaddon Close

Northampton, Northampton

Tucked away in a secluded cul-de-sac location, this well presented detached bungalow comprises an entrance hall, sitting room with open fireplace, dining room, kitchen, three bedrooms all of which are doubles in size, a en-suite shower room and a family bathroom. Externally the home has a beautifully maintained garden with a plethora of mature trees and plants, a double garage and a large block paved driveway.

Council Tax band: E

Tenure: Freehold

- Video Walkthrough & 360 Tour Available
- Detached Bungalow
- Three Double Bedrooms
- Sitting Room & Dining Room
- Kitchen
- En-suite Shower Room & Family Bathroom
- South Westerly Facing Rear Garden
- Double Garage
- Block Paved Driveway







### Entrance Hall

Entered via a covered uPVC door with a glazed panel to the side. Built-in storage cupboard. Radiator.

### Hallway

Airing cupboard housing the hot water cylinder. Loft hatch.

### Sitting Room

11' 3" x 15' 4" (3.43m x 4.67m)

Two windows to the front. Open brick fireplace on a raised tiled hearth. Three wall lights. TV aerial point. Telephone point. Open arch to the dining room. Radiator.

### Dining Room

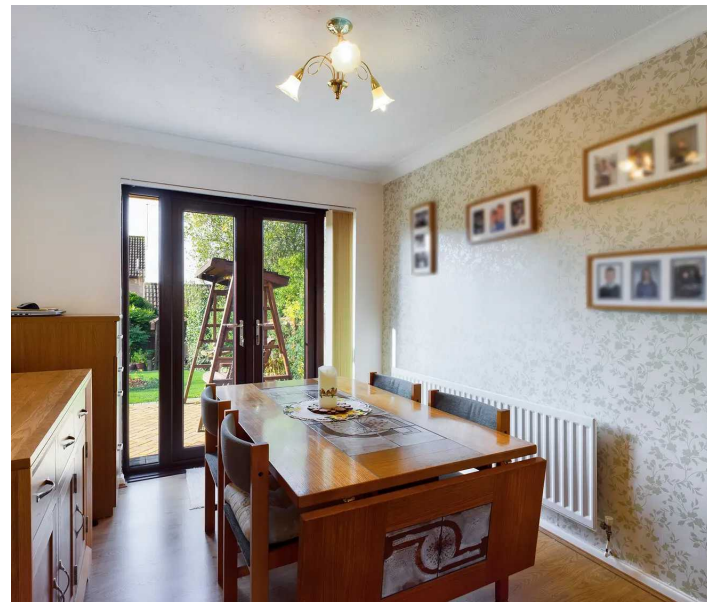
9' 7" x 8' 9" (2.92m x 2.67m)

French doors into the rear garden. Radiator.

### Kitchen

9' 9" x 12' 11" (2.97m x 3.94m)

Fitted with a range of base and wall mounted storage units with working surfaces over and under unit lighting. There is a sink with mixer tap, integrated under counter fridge/freezer, washing machine, eye-level double oven and four ring gas hob with pull out extractor hood over. Window to the rear. uPVC door into the garden.



### Master Bedroom

12' 9" x 11' 8" (3.89m x 3.56m)

Window to the rear. Radiator. Fitted wardrobe units with hanging rails, shelving as well as storage cupboards.

### En-suite Shower Room

Fitted with a three piece suite comprising a pedestal wash basin, walk-in shower cubicle and a W.C. Window to the rear. Heated towel rail.







**Bedroom 2**

12' 1" x 8' 11" (3.68m x 2.72m)

Window to the side. Radiator. Built-in wardrobe with hanging rails, shelving and sliding doors.

**Bedroom 3**

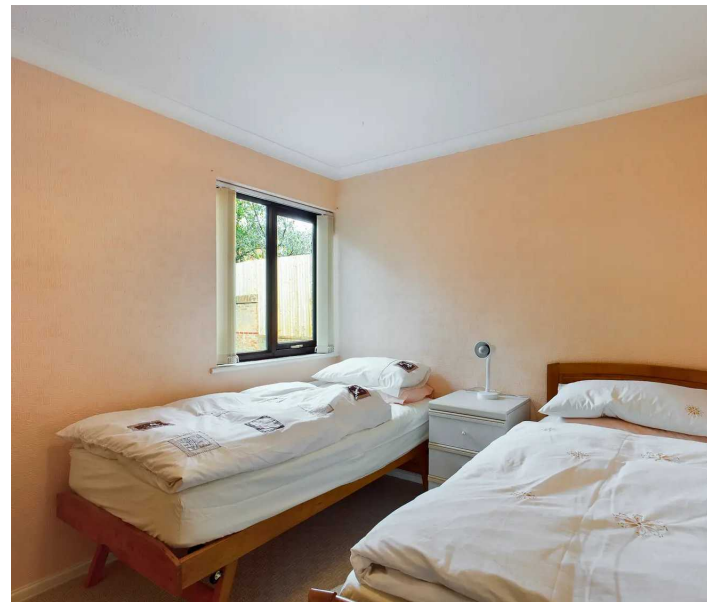
11' 1" x 8' 5" (3.38m x 2.57m)

Window to the side. Radiator. Wardrobes with hanging rails and shelving.

**Bathroom**

6' 4" x 5' 6" (1.93m x 1.68m)

Fitted with a three piece suite comprising a wash basin with storage beneath, bath with separate shower over and a pivoting glass screen. Heated towel rail. Tiled surround. Extractor fan.





## GARDEN

This beautifully presented south westerly facing, fully enclosed garden is primarily laid to lawn with a variety of mature trees, shrubs and flowers, including an apple tree. There is a patio seating area directly adjacent to the home as well as considerable space at the side of the property currently occupied by a green house and raised beds, a personal door into the garage and pedestrian side access.

## DRIVEWAY

4 Parking Spaces

To the front of the property there is a large block paved driveway providing off road parking to the property. The driveway is accessed via a shared blocked paved road, this is shared between four properties.

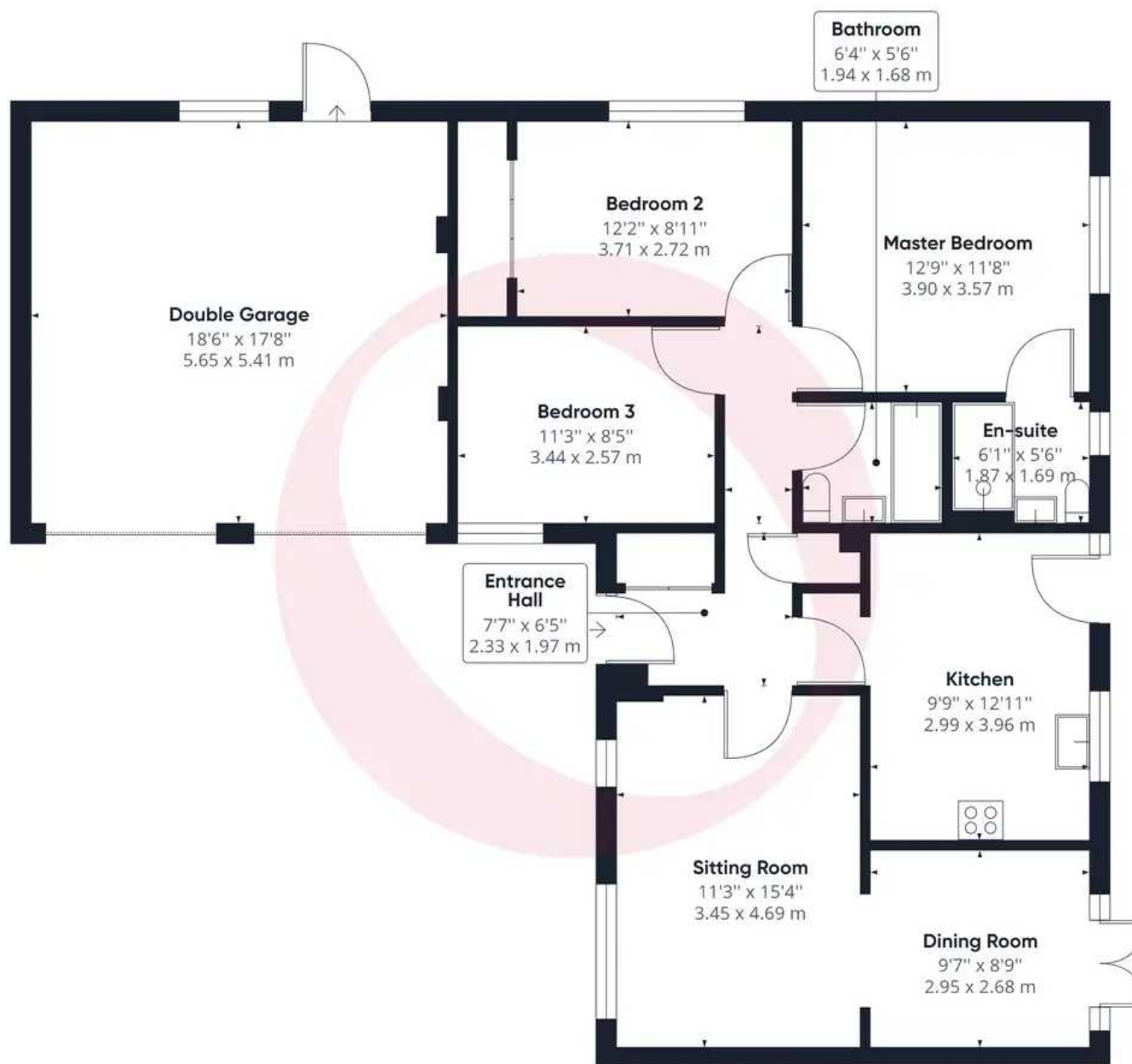
## GARAGE

Double Garage

The double garage has two metal up and over doors to the front and a personal door at the rear. Inside power and light are connected. Wall mounted gas fired boiler. Eaves storage.







Approximate total area<sup>(1)</sup>

1267.64 ft<sup>2</sup>

117.77 m<sup>2</sup>

(1) Excluding balconies and terraces

While every attempt has been made to ensure accuracy, all measurements are approximate, not to scale. This floor plan is for illustrative purposes only.

GIRAFFE 360



 JACKIE OLIVER & CO

Jackie Oliver & Co Estate Agents, 148 Watling Street East - NN12 6DB

01327 359903

[hello@jackie-oliver.co.uk](mailto:hello@jackie-oliver.co.uk)

[www.jackie-oliver.co.uk/](http://www.jackie-oliver.co.uk/)