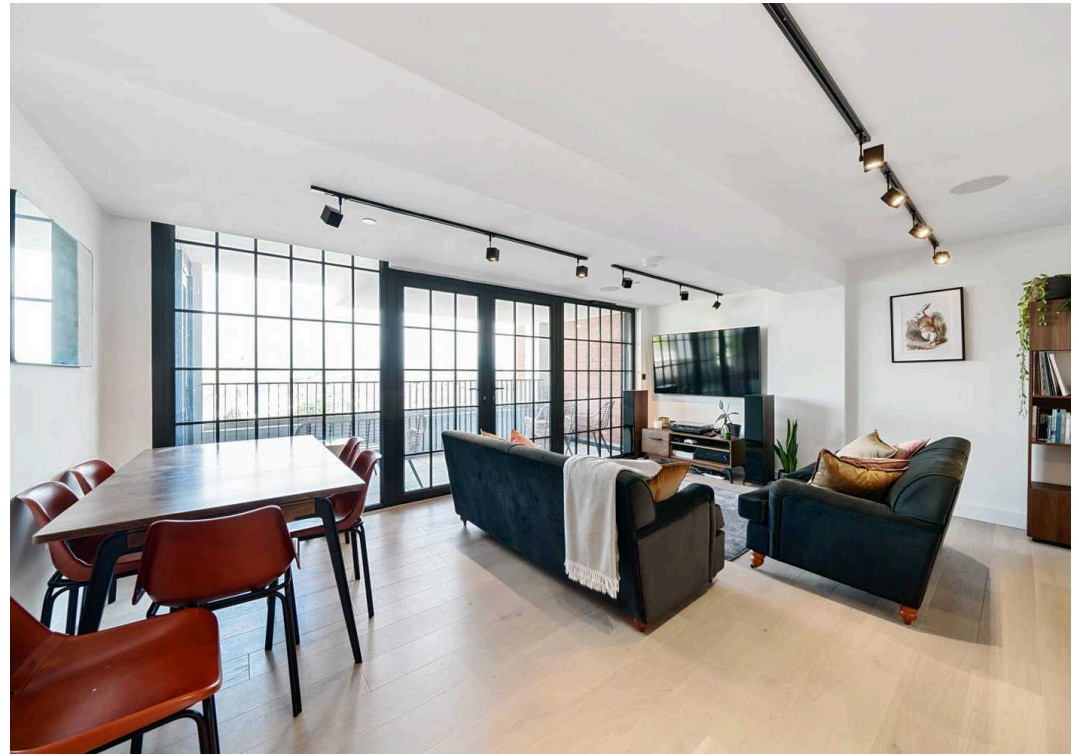
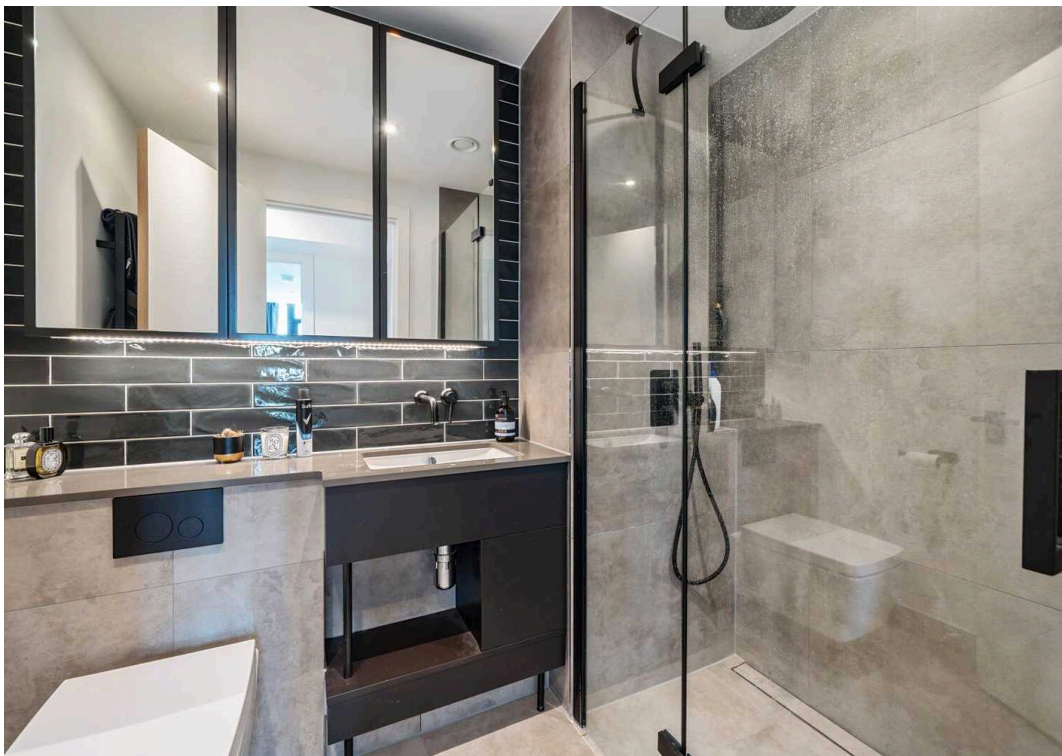
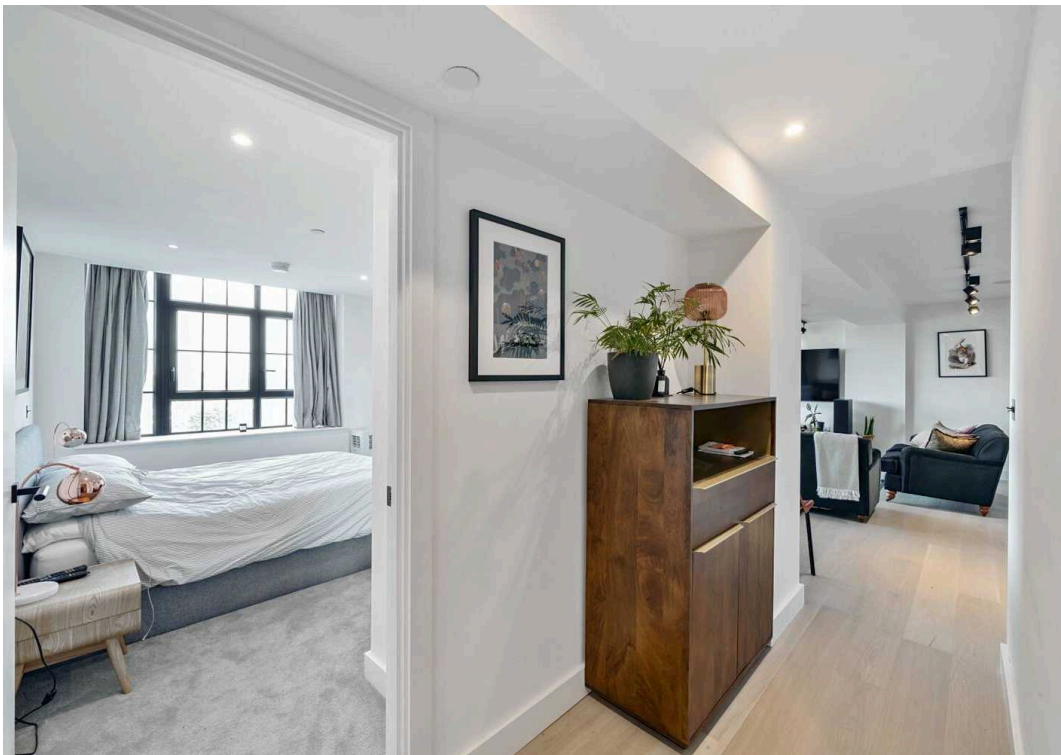


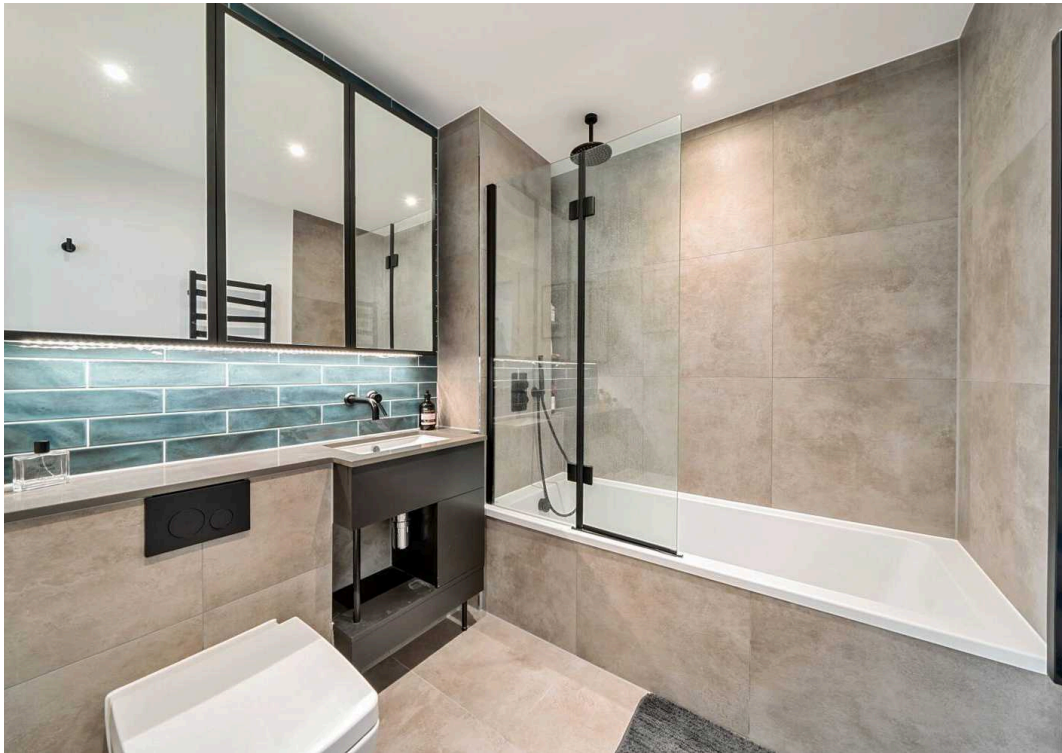


New Tannery Way, SE1

£800,000







Apartment 46

New Tannery Way, SE1

A stylish two double bedroom warehouse style apartment on the 4th floor of this newly completed development. A generous living space leads to a private terrace with uninterrupted views.

Council Tax band: E

Tenure: Leasehold

EPC Energy Efficiency Rating: B

EPC Environmental Impact Rating: A

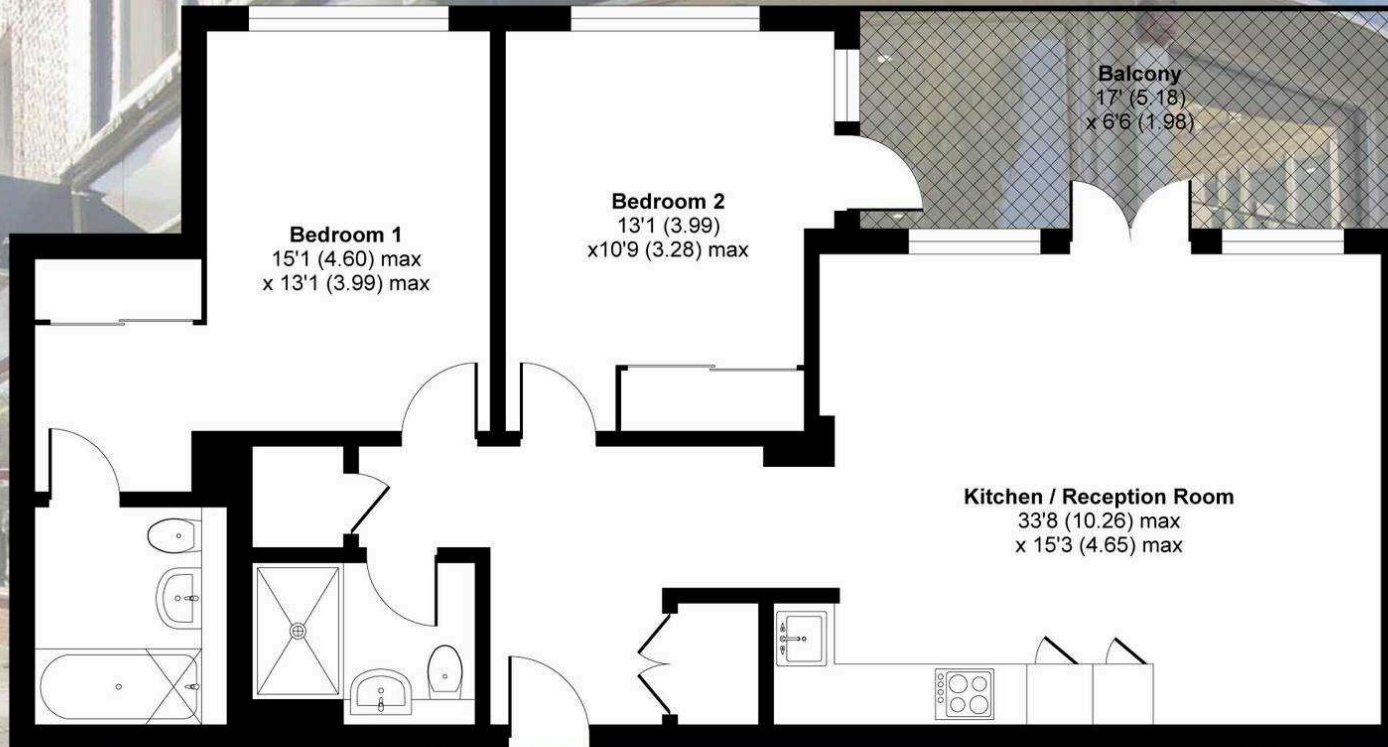
- Fourth floor apartment with a stylish and beautifully presented interior
- Recently completed landmark development of 4.7 acres
- Fully fitted and equipped Siematic kitchen with Siemens appliances
- Principal bedroom with bespoke ensuite and dressing area with fitted wardrobes
- In house concierge and on site gym
- Fantastic storage throughout
- Easy walking distance to London Bridge station
- Wood flooring with underfloor heating
- Extensive Crittal glazing maximising natural light
- Open plan living space with full width private terrace with far reaching views



New Tannery Way, London, SE1

Approximate Area = 838 sq ft / 77.8 sq m

For identification only - Not to scale



FORTH FLOOR



Floor plan produced in accordance with RICS Property Measurement Standards incorporating International Property Measurement Standards (IPMS2 Residential). © nichecom 2024. Produced for Daniel Cobb. REF: 1120421



Daniel Cobb

Daniel Cobb Estate Agents, 82-84 Bermondsey Street – SE1 3UD

020 7357 0026 • londonbridge@danielcobb.co.uk • www.danielcobb.co.uk/