



**Bakewell Road, Eccles**

Manchester



Offers Over **£170,000**

# Bakewell Road

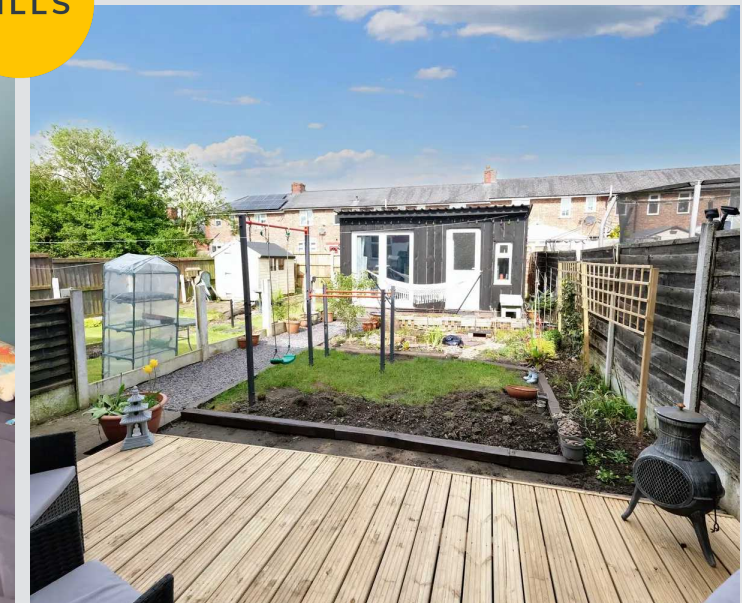
Eccles, Manchester

PERFECT FIRST TIME BUY! Take a look at this well presented TWO DOUBLE BEDROOM terrace property situated in a popular part of Peel Green!

Council Tax band: A

Tenure: Freehold

- Well presented mid terrace property
- Two spacious bedrooms and a additional office / dressing room space
- Cosy living room featuring a log burner
- Off road parking to the front
- Spacious family bathroom
- Decked rear garden featuring a large garden room
- Perfect first home or ideal investment
- Located close to excellent amenities & transport links



### Lounge

11' 1" x 13' 9" (3.38m x 4.19m)

Featuring a log burner. Complete with a ceiling light point, double glazed window and wall mounted radiator. Fitted with carpet flooring.

### Kitchen

8' 0" x 16' 3" (2.45m x 4.95m)

Featuring complementary wall and base units with space for a double range cooker, washing machine and fridge freezer. Complete with a ceiling light point, double glazed window and wall mounted radiator. Fitted with composite rear door and lino flooring.

### Landing

Complete with a ceiling light point and carpet flooring.

### Bedroom One

11' 7" x 10' 5" (3.52m x 3.18m)

Complete with a ceiling light point, double glazed window and wall mounted radiator. Fitted with carpet flooring.

### Bedroom Two

11' 5" x 8' 1" (3.48m x 2.46m)

Complete with a ceiling light point, double glazed window and wall mounted radiator. Fitted with carpet flooring.

### Office Room

9' 1" x 5' 1" (2.76m x 1.55m)

Complete with a ceiling light point, double glazed window and wall mounted radiator. Fitted with carpet flooring.

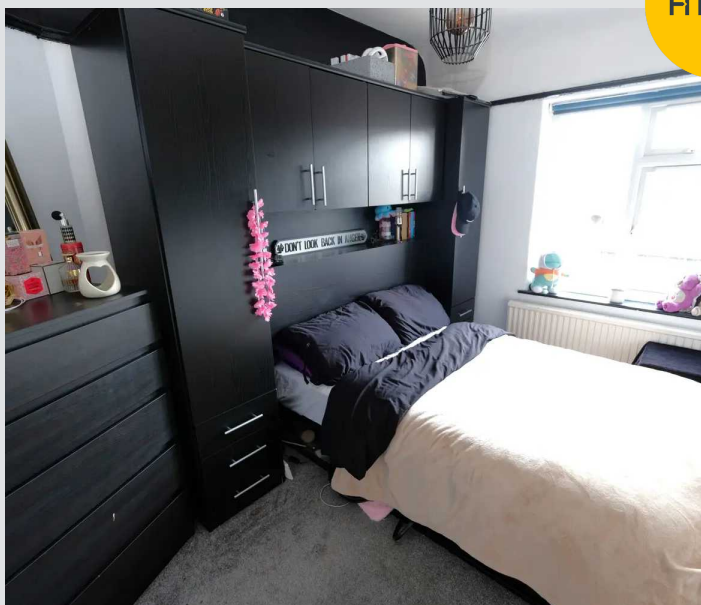
### Bathroom

7' 11" x 8' 1" (2.42m x 2.46m)

Featuring a three-piece suite including a bath with shower over, hand wash basin and W.C. Complete with a ceiling light point, double glazed window and wall mounted radiator. Fitted with bamboo flooring.

### External

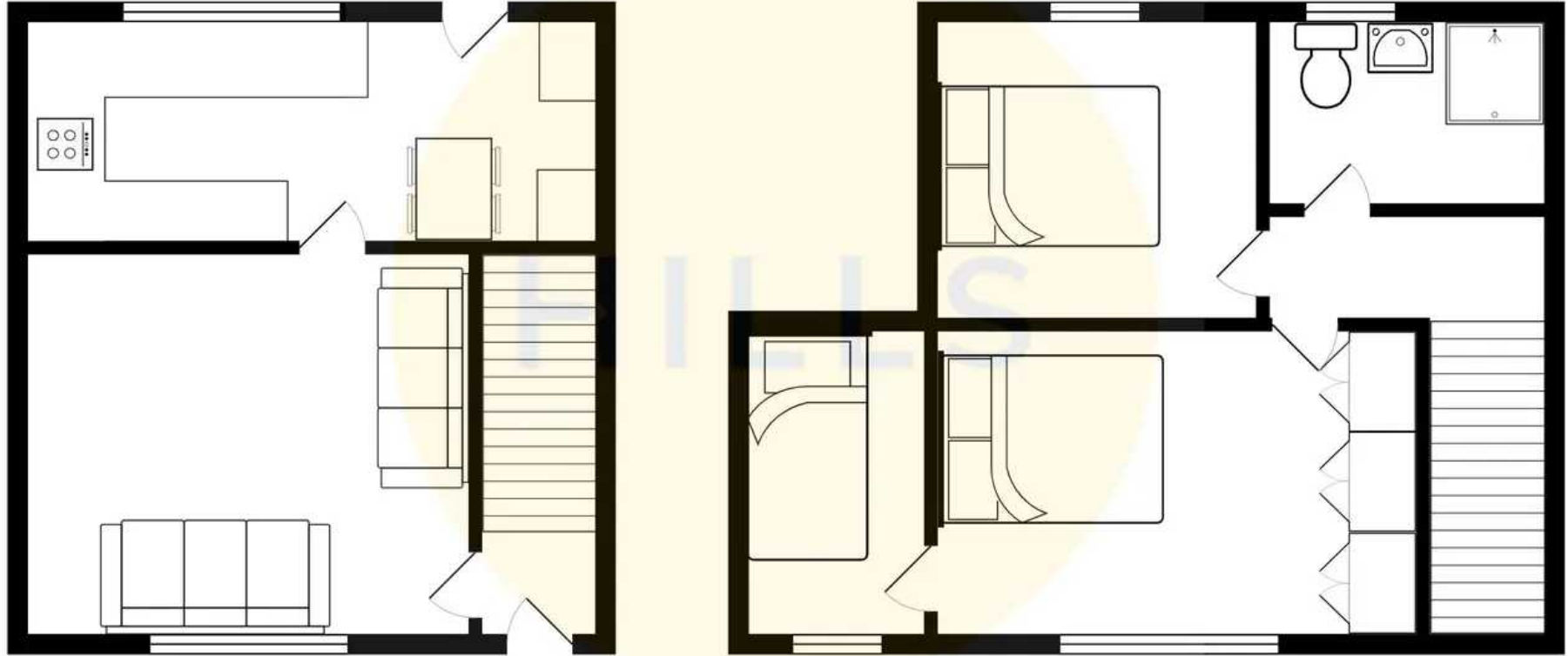
To the rear of the property is a decked seating area and garden room measuring 16ft x 12ft, built in 2021.





HILLS







## Hills | Salfords Estate Agent

Hills Residential, Sentinel House Albert Street - M30 0SS

0161 707 4900

[sales@hills.agency](mailto:sales@hills.agency)

[www.hills.agency/](http://www.hills.agency/)



THE PROPERTY MISDESCRIPTIONS ACT 1991 The Agent has not tested any apparatus, equipment, fixtures and fittings or services and so cannot verify that they are in working order or fit for the purpose. A Buyer is advised to obtain verification from their Solicitor or Surveyor. References to the Tenure of a Property are based on information supplied by the Seller. The Agent has not had sight of the title documents. A Buyer is advised to obtain verification from their Solicitor. You are advised to check the availability of this property before travelling any distance to view. Every effort and precaution has been made to ensure these particulars are correct and not misleading but their accuracy is not guaranteed nor do they form part of any contract. If there is any point which is of particular importance to you, please contact us and we will provide any information you require. This is advisable, particularly if you intend to travel some distance to view the property. The mention of any appliances and services within these details does not imply that they are in full and efficient working order. These particulars are in draft form awaiting Vendors confirmation of their accuracy. These details must therefore be taken as a guide only.