



Witney Road, Eynsham

Breckon & Breckon  
EST. 1847

# Trethewey House, 4 Witney Road

Eynsham OX29 4PG

Located in the desirable village of Eynsham, this delightful 1920s home has undergone a completion programme of extension and refurbishment resulting in a fabulous finish to this fine, bespoke home. The stylish and beautifully presented living space is across two floors and is complemented perfectly by the generous garden. The superb, welcoming entrance hall has a red brick fireplace with stove and leads to a stunning, open plan, contemporary fitted kitchen/dining/family area, a truly wonderful centre point creating a fabulous social space, ideal for entertaining. Fitted with a wide range of units, integrated appliances and large island the kitchen/family area is filled with natural light through a combination of roof lights and two sets of doors to the paved terrace. There is a feature display brick fireplace in the kitchen and dual brick chimney feature from the dining/family area through to the sitting area. Accompanying this incredible ground floor picture is a further reception.

There are four large bedrooms and three contemporary fitted bathrooms.

Laid to lawn the generous garden is a great space for alfresco entertaining.

 4

 3

 3

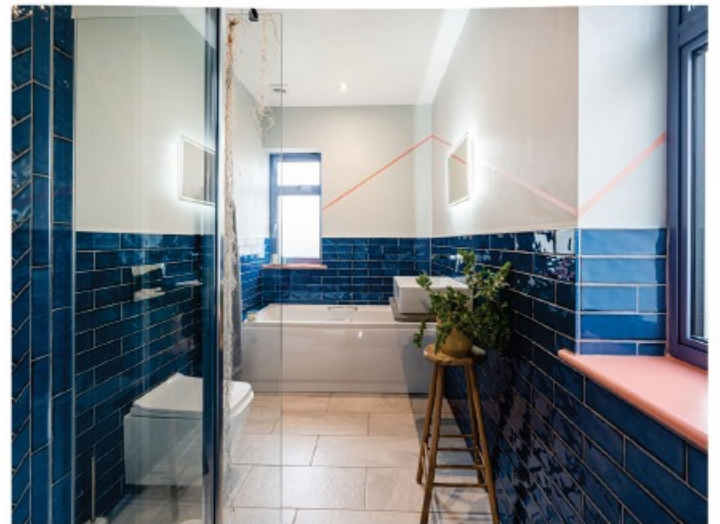


Generous plot

**£950,000**



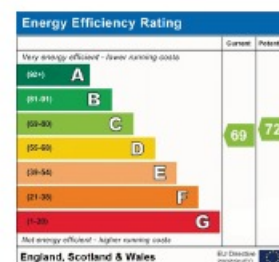




**Council Tax:**  
Band F - £3,377.2

**Parking**  
Ample driveway  
parking plus garage at  
rear

**Local Authority**  
West Oxfordshire  
District Council



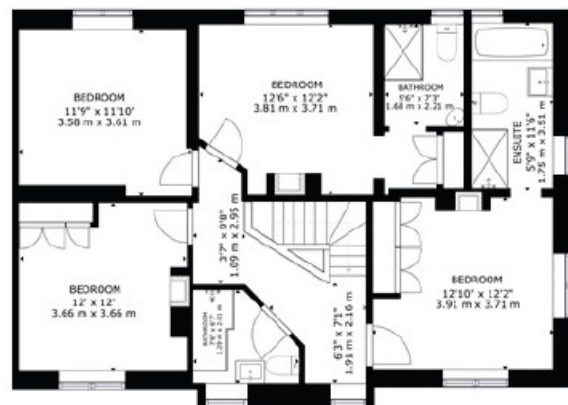
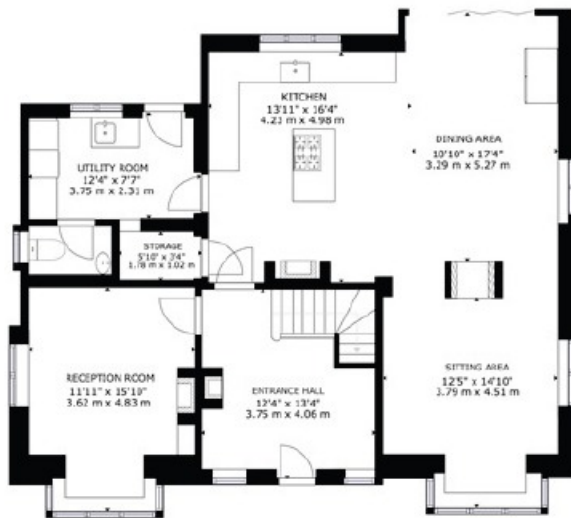
IMPORTANT NOTICE: These particulars are for information purposes only and do not in whole or in part constitute or form part of any offer or contract, nor should any statement obtained herein be relied upon as a statement or representation of fact. Breckon & Breckon do not test whether the services connected to the property, heating systems and domestic appliances are in working order. We therefore recommend that the purchaser obtains verification from their surveyor or solicitor. Whilst every attempt has been made to ensure the accuracy of the floor plans contained here, measurements of doors, windows and rooms are approximate and no responsibility is taken for any error, omission or mis-statement. These plans are for representation purposes only as defined by the RICS code of measuring practice and should be used as such by any possible purchaser.

# “Agent's comment”

*Beautifully presented this delightful family home offers ample accommodation finished to a high specification. The generous gardens and ample parking perfectly complement the inside living space.*

*Located within walking distance of shops, both primary and secondary education and a main bus route to Oxford/Witney/Carterton.*

*Properties of this nature are seldom seen for sale in this wonderful village with its thriving community and an appointment to view is highly recommended to fully appreciate the charm of this superb home.*



GROSS INTERNAL AREA  
 FLOOR 1: 1380 sq ft, 128.68 sq m; FLOOR 2: 2032 sq ft, 93.87 sq m  
 TOTAL: 2512 sq ft, 232.55 sq m  
 SIZES AND DIMENSIONS ARE APPROXIMATE, ACTUAL MAY VARY.



## Our network of offices across Oxfordshire

*Every office* has access to *every buyer* registered across our network of seven offices.

Sharing a single database of buyers ensures maximum exposure for our clients.

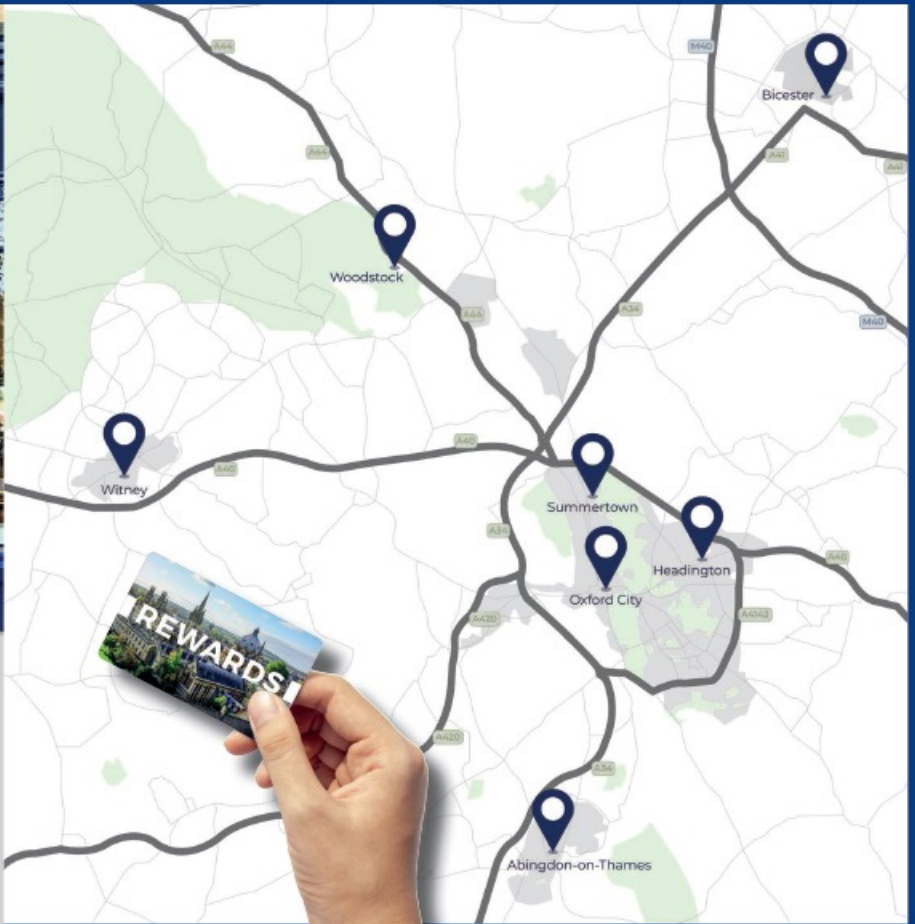
### Witney Sales

10 Market Square  
Witney  
Oxfordshire  
OX28 6BB

t: 01993 776775  
e: witney@breckon.co.uk



**FROM LEFT:** Alexander Chappell, Julia Briggs, Sarah Thomas, Madison Peedell, John Bouwer



### BRECKON REWARDS

Scan to find out more!



naea  
propertymark

PROTECTED

### Summertown

t: 01865 310300 (sales)  
t: 01865 201111 (letting)  
e: summertown@breckon.co.uk

### Oxford City Centre

t: 01865 244735 (sales)  
t: 01865 201111 (letting)  
e: post@breckon.co.uk

### Headington

t: 01865 750200 (sales)  
t: 01865 763999 (letting)  
e: headington@breckon.co.uk

### Abingdon-on-Thames

t: 01235 550550 (sales)  
t: 01235 554040 (letting)  
e: abingdon@breckon.co.uk

### Woodstock

t: 01993 811881 (sales)  
t: 01993 810100 (letting)  
e: woodstock@breckon.co.uk

### Bicester

t: 01869 242423 (sales & letting)  
e: bicester@breckon.co.uk

### New Homes

t: 01865 261222  
e: newhomes@breckon.co.uk

### Land Team

t: 01865 558999  
e: land@breckon.co.uk

### Letting and Property Management

t: 01865 201111  
e: lettings@breckon.co.uk

### Creative Department

t: 01865 310300  
e: creative@breckon.co.uk

**Breckon & Breckon**

est. 1947